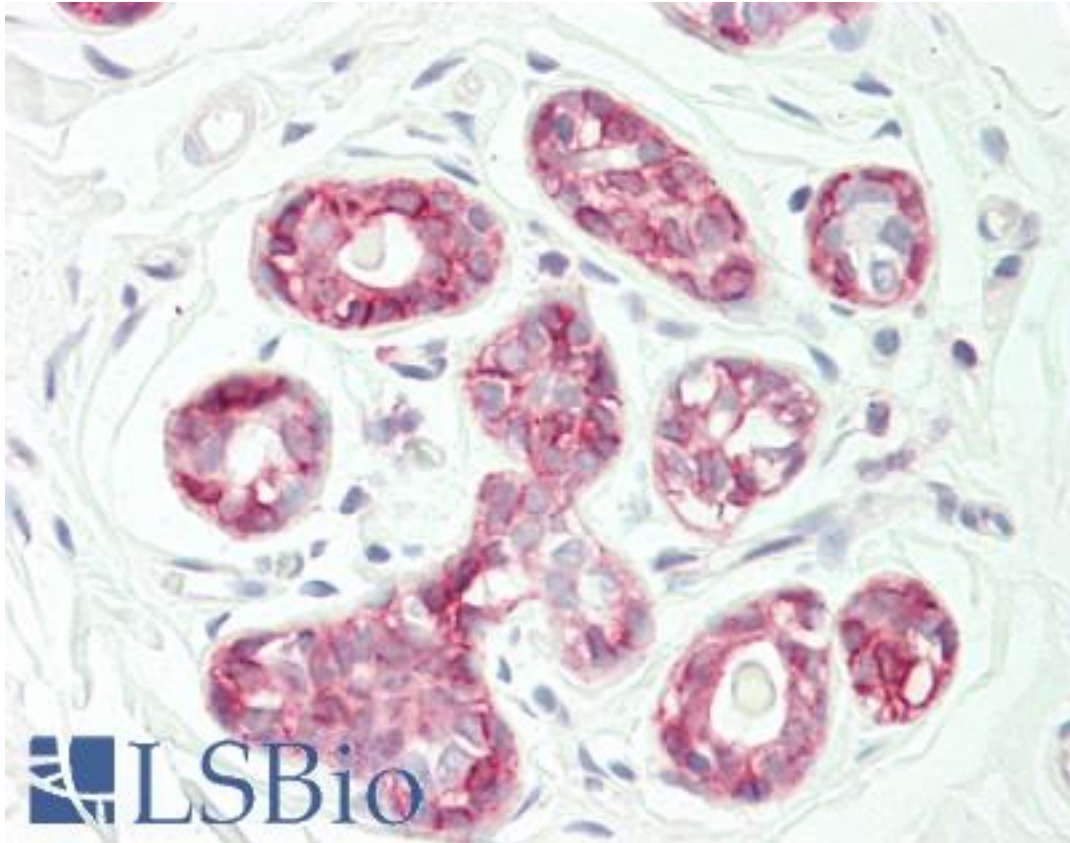


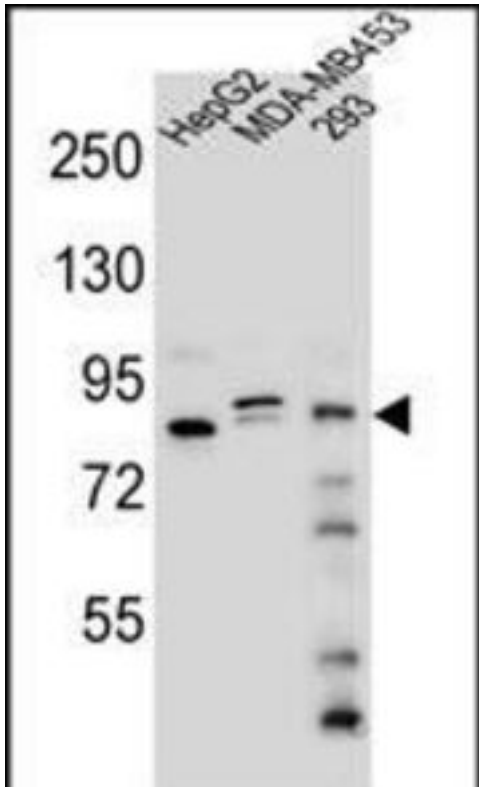
KANSL3 Rabbit anti-Human Polyclonal (aa398-427) Antibody - LS-B10035 - LSBio	
CatalogID:	LS-B10035
Validation:	This antibody replaces catalog number LS-C165493. It has been validated for use in the following assays: IHC-P.
Target:	KAT8 regulatory NSL complex subunit 3 (KANSL3)
Synonyms:	KANSL3 Antibody, NSL complex protein NSL3 Antibody, SI1 Antibody, Non-specific lethal 3 homolog Antibody, PRTD Antibody, Rcd1 Antibody, KIAA1310 Antibody, NSL3 Antibody
Host	KANSL3 antibody was produced in Rabbit
Clonality:	Polyclonal
Immunogen Species:	KANSL3 antibody was raised against Human
Antigen Type:	Synthetic peptide
Immunogen:	KANSL3 antibody was raised against kLH-conjugated synthetic peptide from internal region of human KIAA1310.
Specificity:	Human KANSL3
Epitope:	aa398-427
Reactivity:	Human
Purification:	Immunoaffinity purified
Presentation:	PBS, 0.09% sodium azide
Recommended Storage:	Maintain refrigerated at 2-8°C for up to 6 months. For long term storage store at -20°C.
Uses:	IHC - Paraffin (1:100), Western blot (1:1000) (Optimal dilution to be determined by the researcher)
Size:	200 µl

Immunohistochemistry Image:



Human Breast: Formalin-Fixed, Paraffin-Embedded (FFPE)

Western Blot Image:



KIAA1310 Antibody (Center) Western blot of HepG2,MDA-MB453,293 cell line lysates (35 ug/lane). This demonstrates the KIAA1310 antibody detected the KIAA1310 protein (arrow).

Requested From:

Japan

Laboratory Reagent For In Vitro Research Use Only

Not for resale without prior written consent from LifeSpan BioSciences, Inc.

Created on 9/23/2014

© 2014 LifeSpan BioSciences