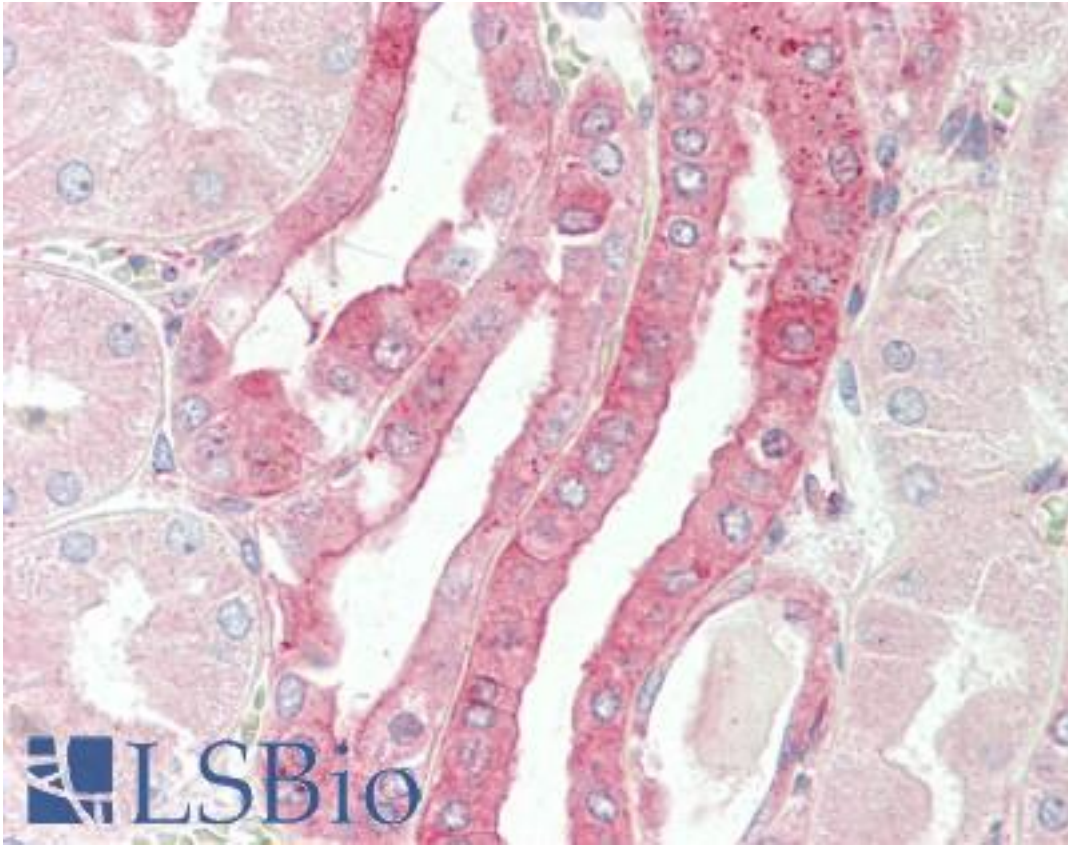


CELF3 Rabbit anti-Human Polyclonal (aa2-32) Antibody - LS-B10033 - LSBio	
CatalogID:	LS-B10033
Validation:	This antibody replaces catalog number LS-C160102. It has been validated for use in the following assays: IHC-P.
Target:	CUGBP, Elav-like family member 3 (CELF3)
Synonyms:	CELF3 Antibody, CELF-3 Antibody, CAG repeat protein 4 Antibody, CAGH4 Antibody, ETR-1 Antibody, ERDA4 Antibody, RNA-binding protein BRUNOL-1 Antibody, TNRC4 Antibody, Bruno-like protein 1 Antibody, BRUNOL1 Antibody, CAG repeat domain Antibody, CUG-BP and ETR-3 like factor 3 Antibody
Host	CELF3 antibody was produced in Rabbit
Clonality:	Polyclonal
Immunogen Species:	CELF3 antibody was raised against Human
Antigen Type:	Synthetic peptide
Immunogen:	CELF3 antibody was raised against kLH-conjugated synthetic peptide from N-terminal region of human TNRC4.
Specificity:	Human CELF3
Epitope:	aa2-32
Reactivity:	Human
Purification:	Immunoaffinity purified
Presentation:	PBS, 0.09% sodium azide
Recommended Storage:	Maintain refrigerated at 2-8°C for up to 6 months. For long term storage store at -20°C.
Uses:	IHC - Paraffin (1:100), Western blot (1:1000), Flow Cytometry (1:10 - 1:50) (Optimal dilution to be determined by the researcher)
Size:	200 µl

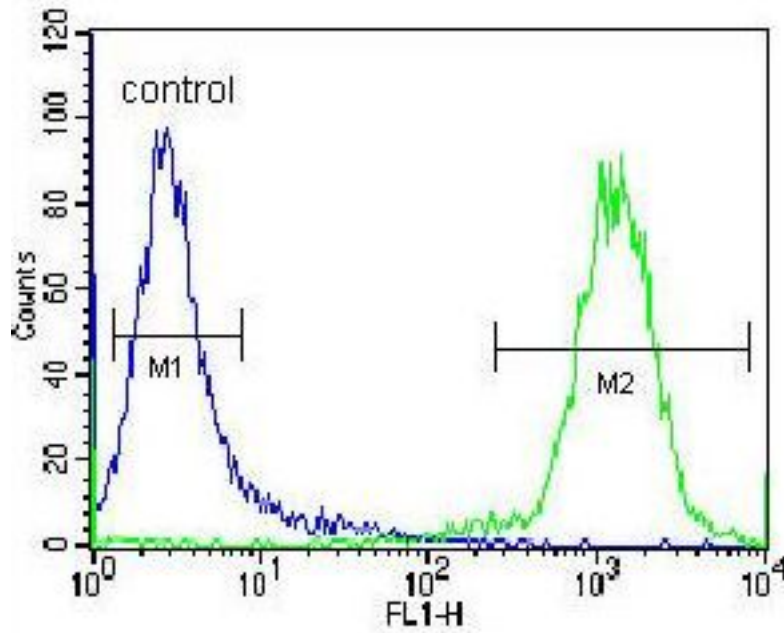
Immunohistochemistry Image:



Human Kidney: Formalin-Fixed, Paraffin-Embedded (FFPE)

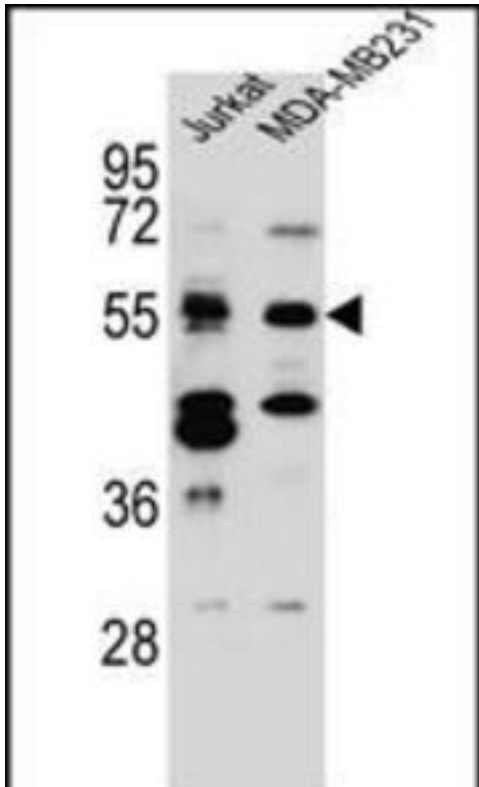
Flow Cytometry Image:

Jurkat



TNRC4 Antibody (N-term) flow cytometry of Jurkat cells (right histogram) compared to a negative control cell (left histogram). FITC-conjugated donkey-anti-rabbit secondary antibodies were used for the analysis.

Western Blot Image:



TNRC4 Antibody (N-term) Western blot of Jurkat,MDA-MB231 cell line lysates (35 ug/lane). This demonstrates the TNRC4 antibody detected the TNRC4 protein (arrow).

Requested From:

Japan

Laboratory Reagent For In Vitro Research Use Only

Not for resale without prior written consent from LifeSpan BioSciences, Inc.

Created on 9/23/2014

© 2014 LifeSpan BioSciences