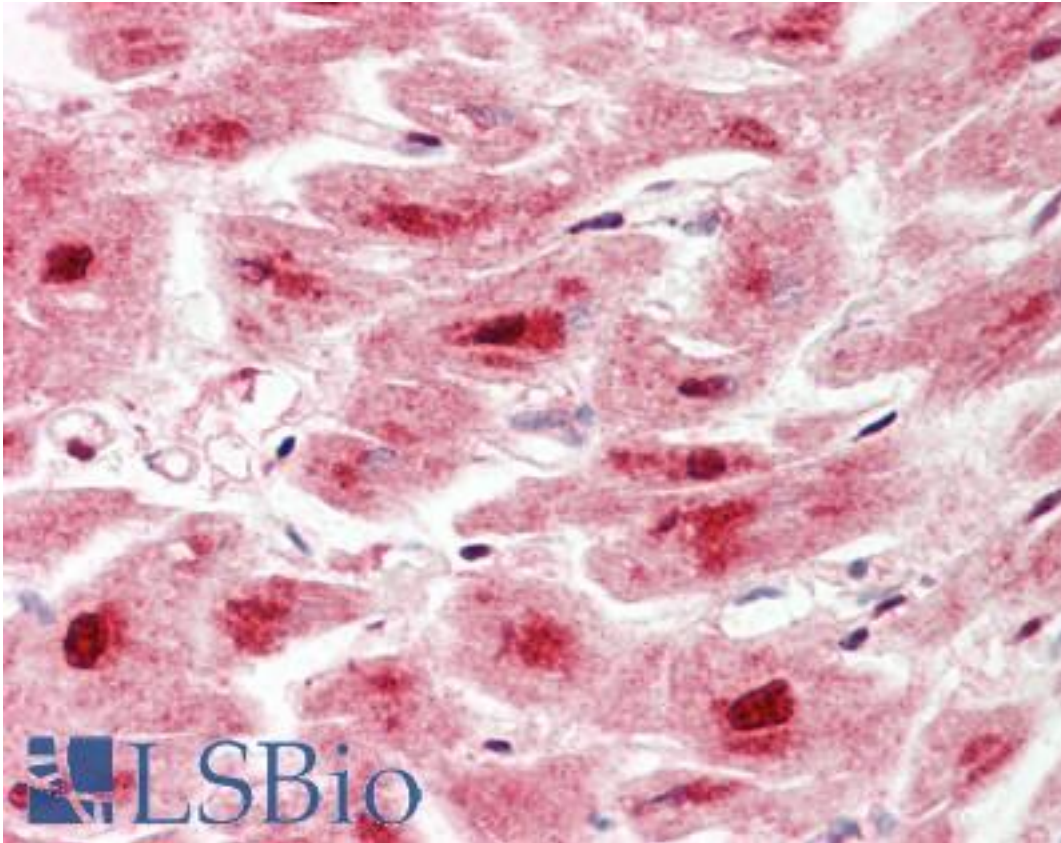


LONP1 / LON Rabbit anti-Human Polyclonal (aa389-418) Antibody - LS-B10032 - LSBio

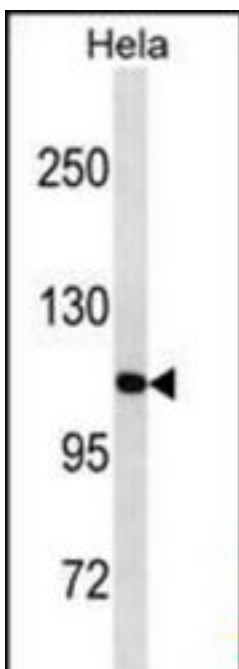
CatalogID:	LS-B10032
Validation:	This antibody replaces catalog number LS-C157867. It has been validated for use in the following assays: IHC-P.
Target:	Ion peptidase 1, mitochondrial (LONP1)
Synonyms:	LONP1 Antibody, HLON ATP-dependent protease Antibody, HLON Antibody, LON Antibody, Lon peptidase 1, mitochondrial Antibody, Lon protease Antibody, LONP Antibody, Mitochondrial Ion peptidase 1 Antibody, Protease, serine, 15 Antibody, PRSS15 Antibody, Lon protease-like protein Antibody, LonHS Antibody, Serine protease 15 Antibody, Protease Serine 15 Antibody
Family / Subfamily:	Protease / Serine S16
Host	LONP1 antibody was produced in Rabbit
Clonality:	Polyclonal
Immunogen Species:	LONP1 / LON antibody was raised against Human
Antigen Type:	Synthetic peptide
Immunogen:	LONP1 / LON antibody was raised against kLH-conjugated synthetic peptide from internal region of human LONP1.
Specificity:	Human LON
Epitope:	aa389-418
Reactivity:	Human
Purification:	Immunoaffinity purified
Presentation:	PBS, 0.09% sodium azide
Recommended Storage:	Maintain refrigerated at 2-8°C for up to 6 months. For long term storage store at -20°C.
Uses:	IHC - Paraffin (1:100), Western blot (1:1000) (Optimal dilution to be determined by the researcher)
Size:	200 µl

Immunohistochemistry Image:



Human Heart: Formalin-Fixed, Paraffin-Embedded (FFPE)

Western Blot Image:



LONP1 Antibody (Center) Western blot of HeLa cell line lysates (35 ug/lane). This demonstrates the LONP1 antibody detected the LONP1 protein (arrow).

Requested From:	Japan
Laboratory Reagent For In Vitro Research Use Only	
Not for resale without prior written consent from LifeSpan BioSciences, Inc.	
Created on 9/23/2014	
© 2014 LifeSpan BioSciences	