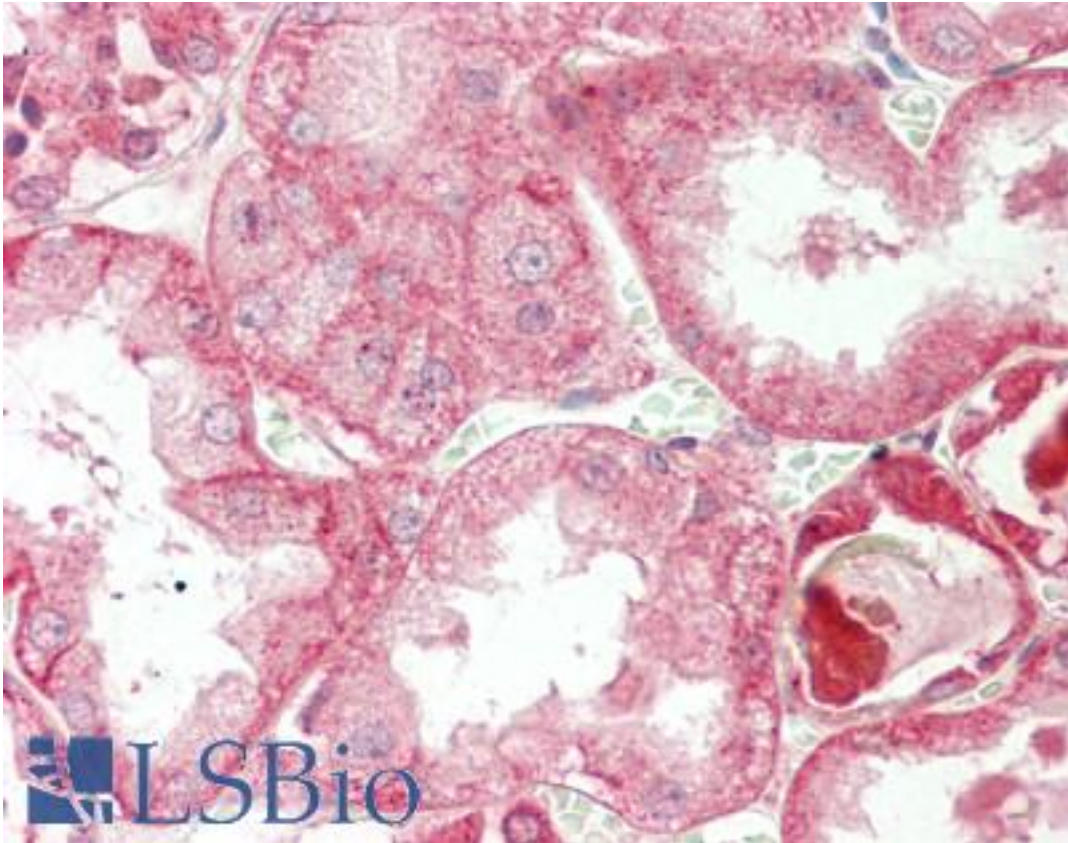


**CREB3 / LZIP Rabbit anti-Human Polyclonal (aa66-94) Antibody - LS-B10031 - LSBio**

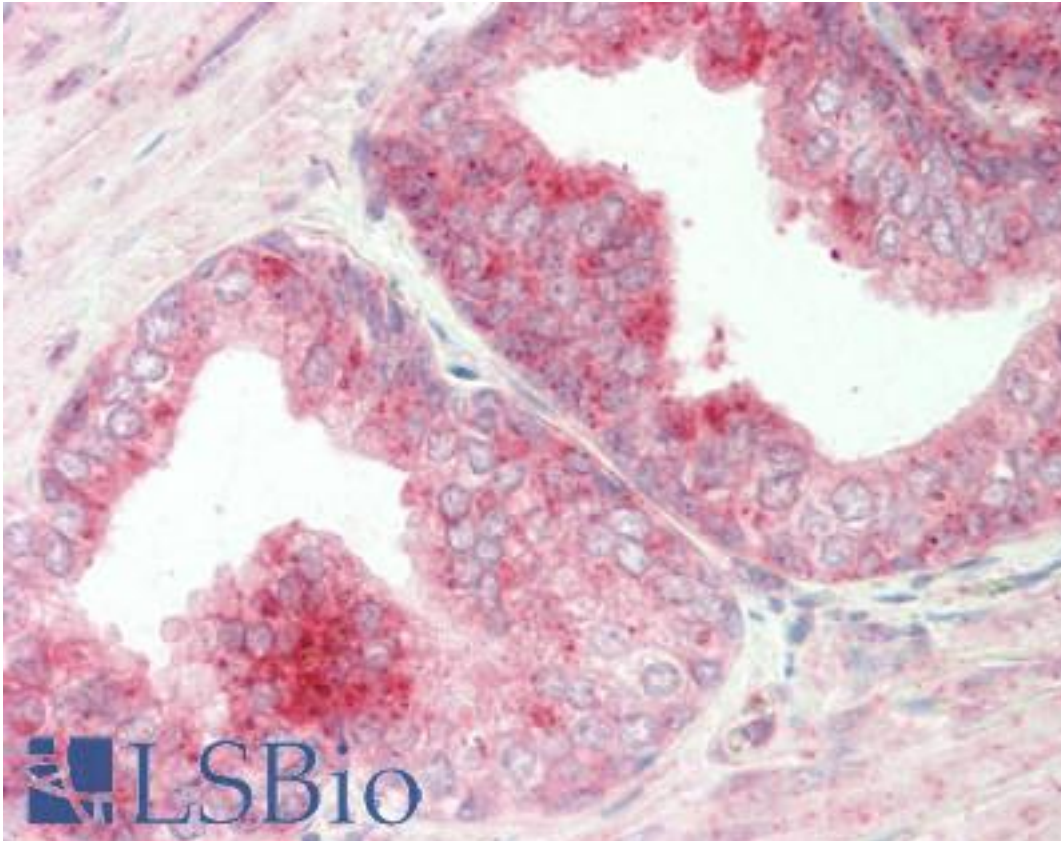
<b>CatalogID:</b>	LS-B10031
<b>Validation:</b>	This antibody replaces catalog number LS-C157661. It has been validated for use in the following assays: IHC-P.
<b>Target:</b>	cAMP responsive element binding protein 3 (CREB3)
<b>Synonyms:</b>	CREB3 Antibody, Basic leucine zipper protein Antibody, CREB-3 Antibody, LUMAN Antibody, LZIP Antibody, Leucin zipper proitein Antibody
<b>Host</b>	CREB3 antibody was produced in Rabbit
<b>Clonality:</b>	Polyclonal
<b>Immunogen Species:</b>	CREB3 / LZIP antibody was raised against Human
<b>Antigen Type:</b>	Synthetic peptide
<b>Immunogen:</b>	CREB3 / LZIP antibody was raised against kLH-conjugated synthetic peptide from N-terminal region of human CREB3.
<b>Specificity:</b>	Human CREB3 / LZIP
<b>Epitope:</b>	aa66-94
<b>Reactivity:</b>	Human
<b>Purification:</b>	Immunoaffinity purified
<b>Presentation:</b>	PBS, 0.09% sodium azide
<b>Recommended Storage:</b>	Maintain refrigerated at 2-8°C for up to 6 months. For long term storage store at -20°C.
<b>Uses:</b>	IHC - Paraffin (1:100), Western blot (1:1000) (Optimal dilution to be determined by the researcher)
<b>Size:</b>	200 µl

**Immunohistochemistry Image:**



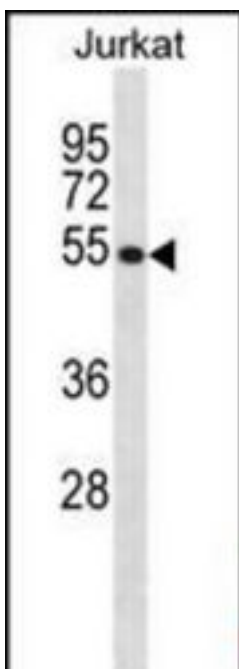
Human Kidney: Formalin-Fixed, Paraffin-Embedded (FFPE)

**Immunohistochemistry Image:**



Human Prostate: Formalin-Fixed, Paraffin-Embedded (FFPE)

**Western Blot Image:**



CREB3 Antibody (N-term) Western blot of Jurkat cell line lysates (35 ug/lane). This demonstrates the CREB3 antibody detected the CREB3 protein (arrow).

<b>Requested From:</b>	Japan
Laboratory Reagent For In Vitro Research Use Only	
Not for resale without prior written consent from LifeSpan BioSciences, Inc.	
Created on 9/23/2014	
© 2014 LifeSpan BioSciences	