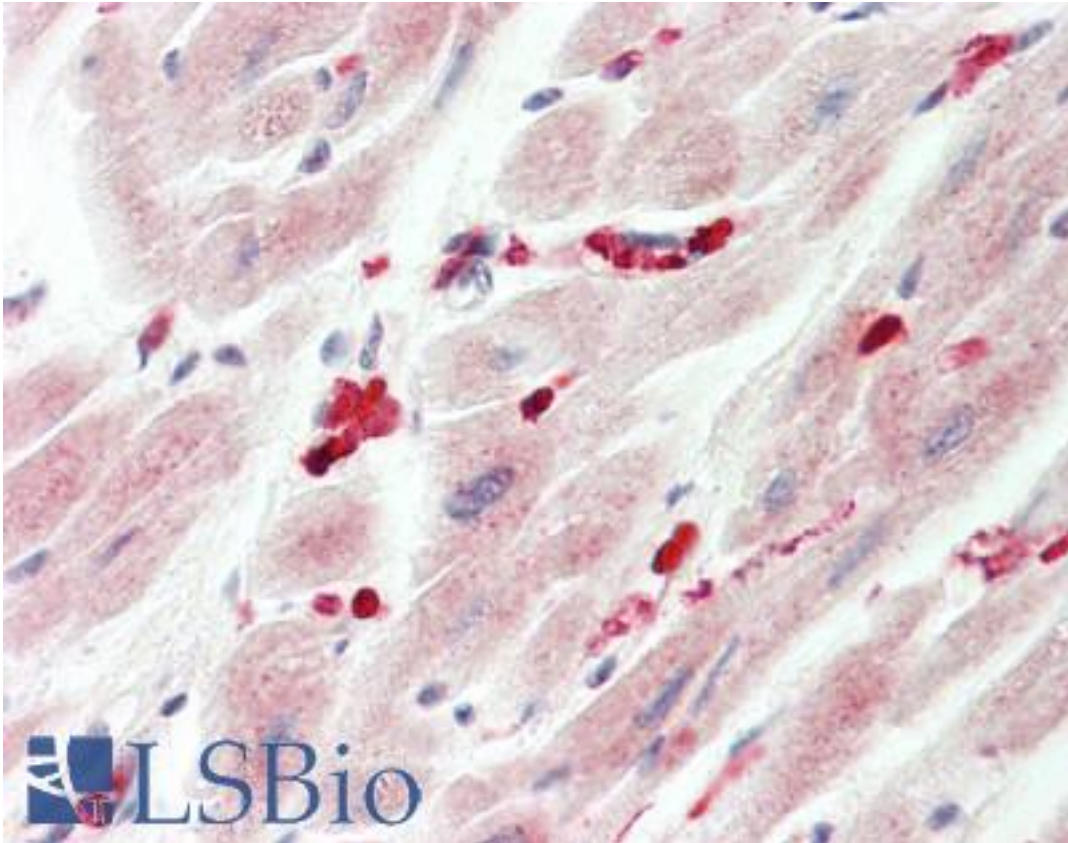


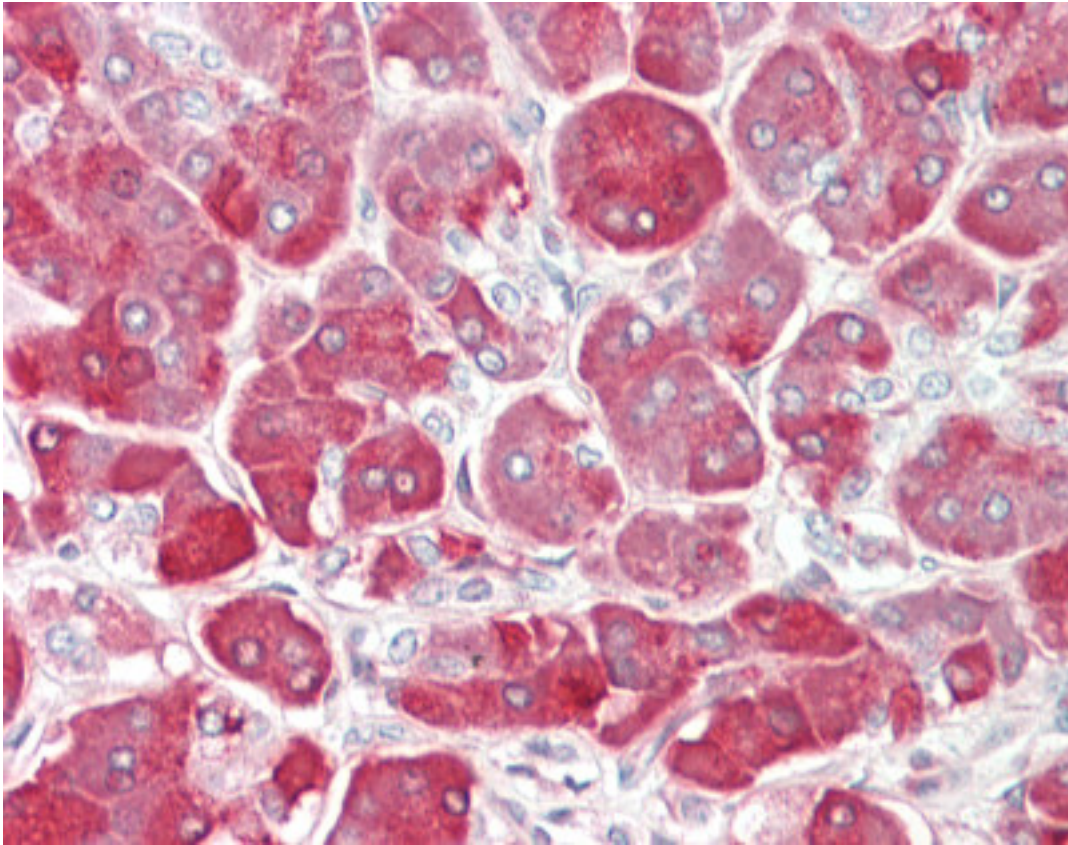
ADRB2 Rabbit anti-Human Polyclonal (Thr384) Antibody - LS-B10030 - LSBio	
CatalogID:	LS-B10030
Validation:	This antibody replaces catalog number LS-C100825. It has been validated for use in the following assays: IHC-P.
Target:	adrenoceptor beta 2, surface (ADRB2)
Synonyms:	ADRB2 Antibody, ADRB2R Antibody, Adrenoceptor beta 2, surface Antibody, ADRBR Antibody, B2AR Antibody, Beta-2 adrenoceptor Antibody, Beta-2 adrenergic receptor Antibody, Beta-2 adrenoceptor Antibody, BETA2AR Antibody, BAR Antibody, Adrenergic beta-2 receptor Antibody, Catecholamine receptor Antibody
Family / Subfamily:	GPCR / Adrenergic
Host	ADRB2 antibody was produced in Rabbit
Clonality:	Polyclonal
Immunogen Species:	ADRB2 antibody was raised against Human
Antigen Type:	Synthetic peptide
Immunogen:	ADRB2 antibody was raised against kLH conjugated synthetic peptide corresponding to amino acid residues surrounding T384 of human BAR2.
Epitope:	Thr384
Reactivity:	Human
Purification:	Immunoaffinity purified
Presentation:	PBS, 0.09% sodium azide
Recommended Storage:	Maintain refrigerated at 2-8°C for up to 6 months. For long term storage store at -20°C.
Uses:	IHC - Paraffin (1:100), Western blot (1:1000) (Optimal dilution to be determined by the researcher)
Size:	200 µl

Immunohistochemistry Image:



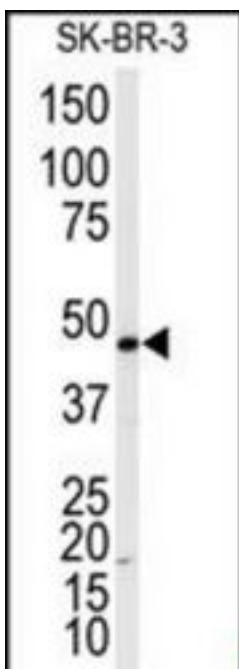
Human Heart: Formalin-Fixed, Paraffin-Embedded (FFPE)

Immunofluorescence Image:



Human Pancreas: Formalin-Fixed, Paraffin-Embedded (FFPE)

Western Blot Image:



Western blot of anti-ADRB2 Antibody (T384) in SK-BR-3 cell line lysates (35 ug/lane). ADRB2 (arrow) was detected using the purified Pab.

Requested From:	Japan
Laboratory Reagent For In Vitro Research Use Only	
Not for resale without prior written consent from LifeSpan BioSciences, Inc.	
Created on 9/23/2014	
© 2014 LifeSpan BioSciences	