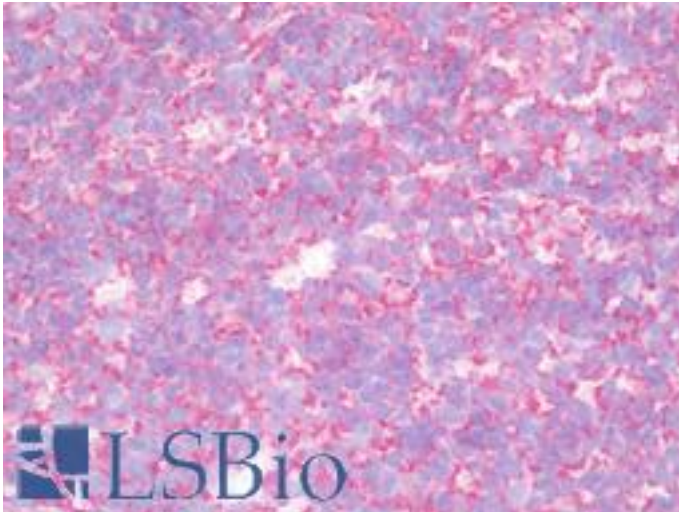


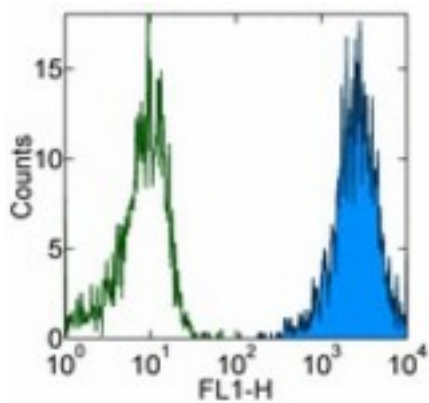
HLA-A/B/C Mouse anti-Human Monoclonal (W6/32) Antibody - LS-B10022 - LSBio	
<b>CatalogID:</b>	LS-B10022
<b>Validation:</b>	This antibody replaces catalog number LS-C106808. It has been validated for use in the following assays: IHC-Fr.
<b>Target:</b>	MHC Class I HLA-A/HLA-B/HLA-C
<b>Host</b>	MHC Class I HLA-A/HLA-B/HLA-C antibody was produced in Mouse
<b>Clonality:</b>	Monoclonal
<b>Isotype:</b>	IgG2a,k
<b>Clone Name:</b>	W6/32
<b>Immunogen Species:</b>	HLA-A/B/C antibody was raised against Human
<b>Immunogen:</b>	HLA-A/B/C antibody was raised against human MHC Class I HLA-A/HLA-B/HLA-C
<b>Reactivity:</b>	Human
<b>Purification:</b>	Affinity purified
<b>Presentation:</b>	PBS, pH 7.2, 150 mM sodium chloride, 0.09% sodium azide
<b>Recommended Storage:</b>	Store at 4°C, avoid repeated freeze thaw cycles.
<b>Usage Summary:</b>	The W6/32 antibody has been tested by flow cytometric analysis of human peripheral blood leukocytes. This can be used at less than or equal to 1 ug per test. A test is defined as the amount (ug) of antibody that will stain a cell sample in a final volume of 100 ul. Cell number should be determined empirically but can range from 10 <sup>5</sup> to 10 <sup>8</sup> cells/test. It is recommended that the antibody be carefully titrated for optimal performance in the assay of interest.
<b>Uses:</b>	IHC - Frozen (10 µg/ml), Flow Cytometry (Optimal dilution to be determined by the researcher)
<b>Uses Not Recommended:</b>	IHC - Paraffin
<b>Size:</b>	50 µg
<b>Concentration:</b>	0.5 mg/ml

**Immunohistochemistry Image:**



IHC with HLA-A/B/C antibody on frozen human tonsil.

**Flow Cytometry Image:**



Staining of normal human peripheral blood cells with 0.5 ug of Purified Mouse IgG2a, K isotype control (open histogram) or 0.5 ug of Purified anti-human HLA-A/B/C (colored histogram) followed by FITC Anti-Mouse IgG. Cells in the lymphocyte gate were used for analysis.

**Requested From:**

Japan

Laboratory Reagent For In Vitro Research Use Only

Not for resale without prior written consent from LifeSpan BioSciences, Inc.

Created on 9/23/2014

© 2014 LifeSpan BioSciences