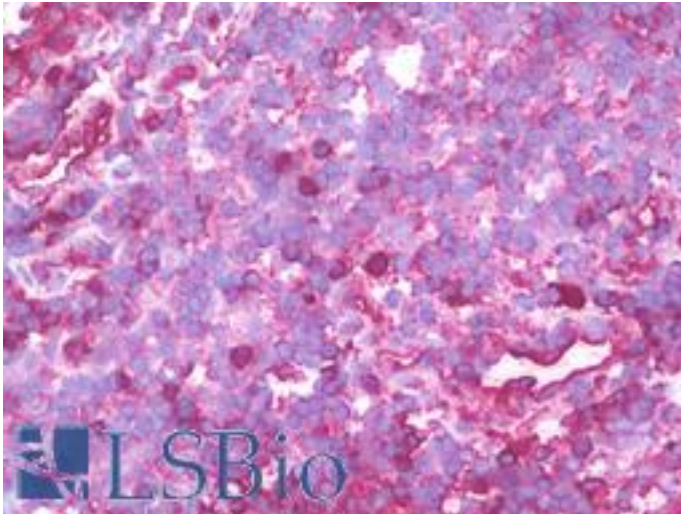


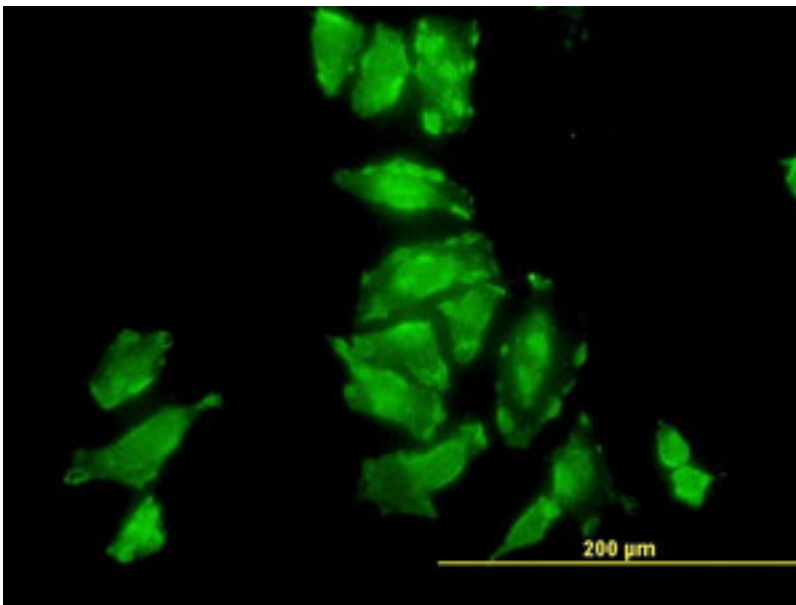
PSMD10 / Gankyrin Mouse anti-Human Monoclonal (4B5) Antibody - LS-B10019 - LSBio	
<b>CatalogID:</b>	LS-B10019
<b>Validation:</b>	This antibody replaces catalog number LS-C104896. It has been validated for use in the following assays: IHC-Fr.
<b>Target:</b>	proteasome (prosome, macropain) 26S subunit, non-ATPase, 10 (PSMD10)
<b>Synonyms:</b>	PSMD10 Antibody, 26s proteasome subunit 10 Antibody, Ankyrin repeat protein Antibody, DJ889N15.2 Antibody, Gankyrin Antibody, p28 Antibody, p28(GANK) Antibody
<b>Family / Subfamily:</b>	Protease Non Catalytic / not assigned-Protease Non Catalytic
<b>Host</b>	PSMD10 antibody was produced in Mouse
<b>Clonality:</b>	Monoclonal
<b>Isotype:</b>	IgG1,k
<b>Clone Name:</b>	4B5
<b>Immunogen Species:</b>	PSMD10 / Gankyrin antibody was raised against Human
<b>Antigen Type:</b>	Recombinant protein
<b>Immunogen:</b>	PSMD10 / Gankyrin antibody was raised against pSMD10 (AAH11960, 127 a.a. ~ 226 a.a) partial recombinant protein with GST tag. MW of the GST tag alone is 26 KDa.
<b>Reactivity:</b>	Human
<b>Purification:</b>	Protein A purified
<b>Presentation:</b>	PBS, pH 7.4.
<b>Recommended Storage:</b>	Store at -20°C. Aliquot to avoid freeze/thaw cycles.
<b>Usage Summary:</b>	Western Blot (Cell lysate) - positive control HeLa. Immunohistochemistry (Formalin/PFA-fixed paraffin-embedded sections, 3 ug/ml) - positive control human tonsil. Immunofluorescence (10 ug/ml) - positive control HeLa cells. Sandwich ELISA (Recombinant protein).
<b>Uses:</b>	IHC - Frozen (1:50), Immunofluorescence (10 µg/ml), Western blot, ELISA (Optimal dilution to be determined by the researcher)
<b>Uses Not Recommended:</b>	IHC - Paraffin
<b>Size:</b>	50 µg

**Immunohistochemistry Image:**



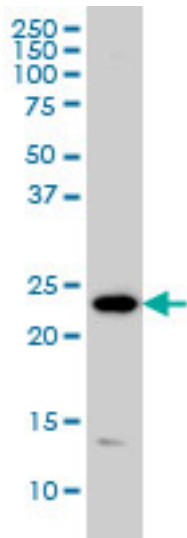
IHC with PSMD10 antibody on frozen human tonsil.

**Immunofluorescence Image:**



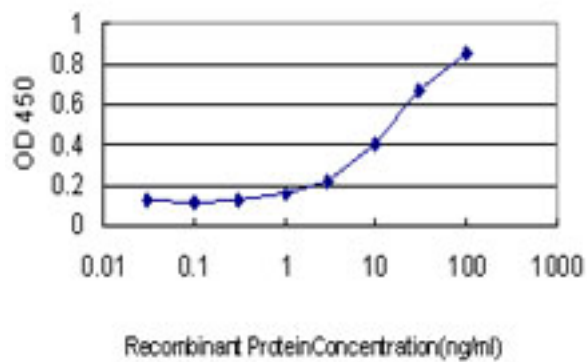
Immunofluorescence of monoclonal antibody to PSMD10 on HeLa cell (antibody concentration 10 ug/ml).

**Western Blot Image:**



PSMD10 monoclonal antibody (M01), clone 4B5 Western blot of PSMD10 expression in HeLa.

**ELISA Image:**



Detection limit for recombinant GST tagged PSMD10 is approximately 0.3 ng/ml as a capture antibody.

**Requested From:**

Japan

Laboratory Reagent For In Vitro Research Use Only

Not for resale without prior written consent from LifeSpan BioSciences, Inc.

Created on 9/23/2014

© 2014 LifeSpan BioSciences