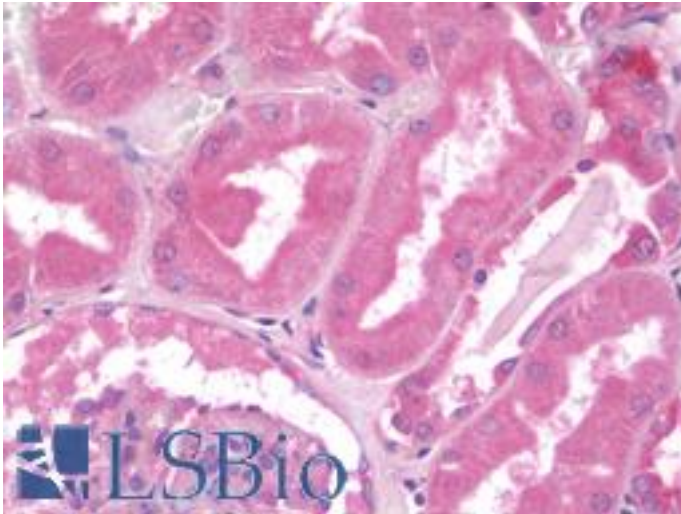


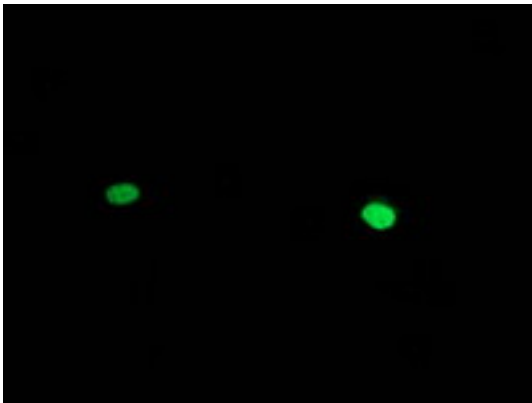
HAND1 Mouse anti-Human Monoclonal (1G10) Antibody - LS-B10018 - LSBio	
<b>CatalogID:</b>	LS-B10018
<b>Validation:</b>	This antibody replaces catalog number LS-C172837. It has been validated for use in the following assays: IHC-P.
<b>Target:</b>	heart and neural crest derivatives expressed 1 (HAND1)
<b>Synonyms:</b>	HAND1 Antibody, EHand Antibody, Hxt Antibody, BHLHa27 Antibody, Thing1 Antibody
<b>Family / Subfamily:</b>	Transcription factor / not assigned-Transcription factor
<b>Host</b>	HAND1 antibody was produced in Mouse
<b>Clonality:</b>	Monoclonal
<b>Isotype:</b>	IgG2b
<b>Clone Name:</b>	1G10
<b>Immunogen Species:</b>	HAND1 antibody was raised against Human
<b>Antigen Type:</b>	Recombinant protein
<b>Immunogen:</b>	HAND1 antibody was raised against full length human recombinant protein of human HAND1 (NP_004812) produced in E. coli.
<b>Specificity:</b>	Human HAND1
<b>Reactivity:</b>	Human
<b>Purification:</b>	Protein A/G purified
<b>Presentation:</b>	PBS, pH 7.3, 1% BSA, 50% glycerol, 0.02% sodium azide
<b>Recommended Storage:</b>	Store at -20°C. Minimize freezing and thawing.
<b>Uses:</b>	IHC - Paraffin (10 µg/ml), Immunofluorescence (1:100), Western blot (1:500), Flow Cytometry (1:100) (Optimal dilution to be determined by the researcher)
<b>Size:</b>	50 µl
<b>Concentration:</b>	0.82 mg/ml

**Immunohistochemistry Image:**



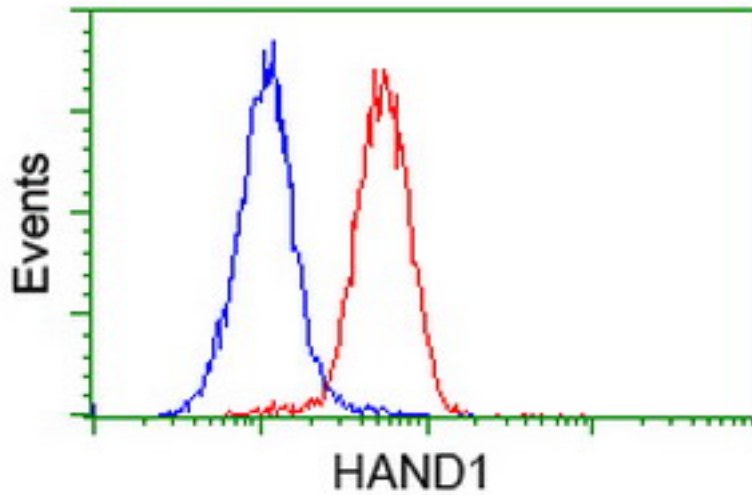
Human Kidney: Formalin-Fixed, Paraffin-Embedded (FFPE)

**Immunofluorescence Image:**



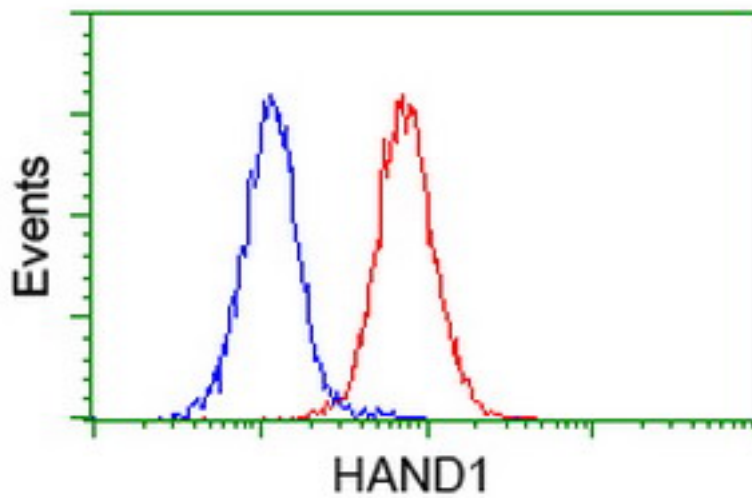
Anti-HAND1 mouse monoclonal antibody immunofluorescent staining of COS7 cells transiently transfected by pCMV6-ENTRY HAND1.

**Flow Cytometry Image:**



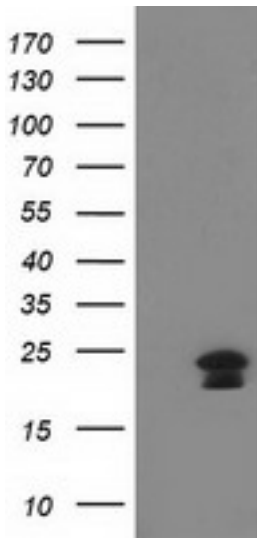
Flow cytometry of HeLa cells, using anti-HAND1 antibody (Red), compared to a nonspecific negative control antibody (Blue).

**Flow Cytometry Image:**



Flow cytometry of Jurkat cells, using anti-HAND1 antibody (Red), compared to a nonspecific negative control antibody (Blue).

**Western Blot Image:**



HEK293T cells were transfected with the pCMV6-ENTRY control (Left lane) or pCMV6-ENTRY HAND1 (Right lane) cDNA for 48 hrs and lysed. Equivalent amounts of cell lysates (5 ug per lane) were separated by SDS-PAGE and immunoblotted with anti-HAND1.

**Requested From:**

Japan

Laboratory Reagent For In Vitro Research Use Only

Not for resale without prior written consent from LifeSpan BioSciences, Inc.

Created on 9/23/2014

© 2014 LifeSpan BioSciences