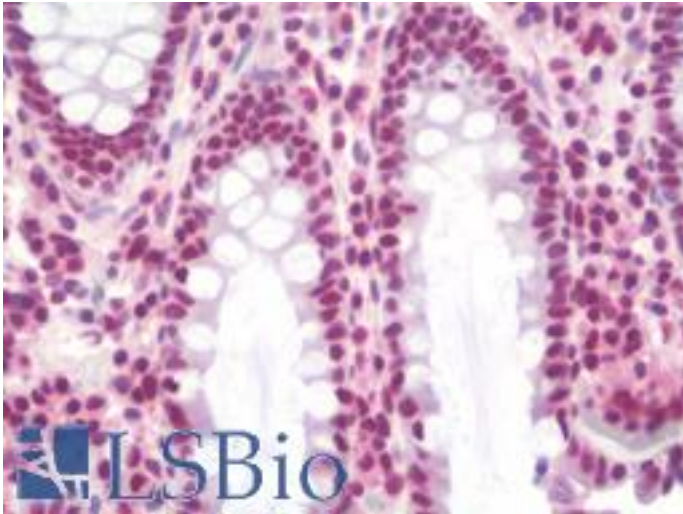


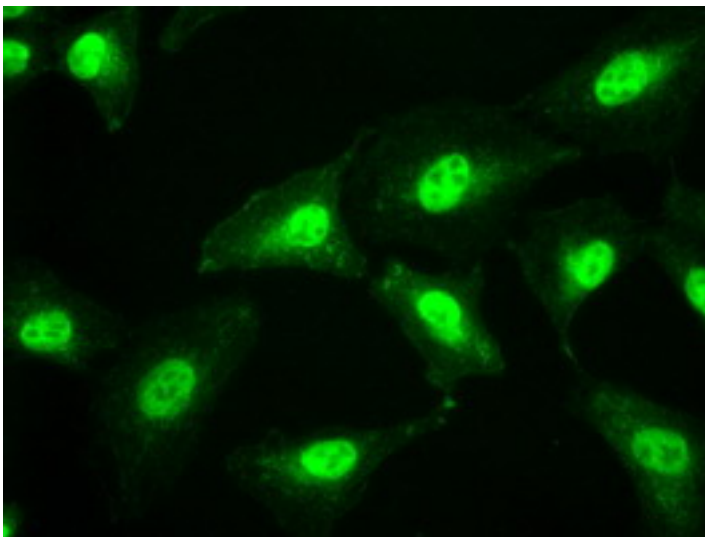
SSB / La Mouse anti-Human Monoclonal (9D6) Antibody - LS-B10013 - LSBio	
CatalogID:	LS-B10013
Validation:	This antibody replaces catalog number LS-C114513. It has been validated for use in the following assays: IHC-P.
Target:	Sjogren syndrome antigen B (autoantigen La) (SSB)
Synonyms:	SSB Antibody, Autoantigen La Antibody, La Antibody, La ribonucleoprotein Antibody, Lupus La antigen Antibody, SS-B Antibody, SS-B/La protein Antibody, La autoantigen Antibody, LARP3 Antibody, Lupus La protein Antibody
Host	SSB antibody was produced in Mouse
Clonality:	Monoclonal
Isotype:	IgG3
Clone Name:	9D6
Immunogen Species:	SSB / La antibody was raised against Human
Antigen Type:	Transfected Cells
Immunogen:	SSB / La antibody was raised against protein expressed in 293T cell transfected with human SSB expression vector.
Specificity:	Human SSB / La
Reactivity:	Human, Monkey, Dog
Purification:	Protein A/G purified
Presentation:	PBS, pH 7.3, 1% BSA, 50% glycerol, 0.02% sodium azide
Recommended Storage:	Store at -20°C. Minimize freezing and thawing.
Usage Summary:	Concentration: 0.5-1.0 mg/ml (Lot dependent)
Uses:	IHC - Paraffin (10 µg/ml), Immunofluorescence (1:50 - 1:100), Western blot (1:1000 - 1:2000), Immunoprecipitation, Flow Cytometry (1:100) (Optimal dilution to be determined by the researcher)
Size:	100 µl
Concentration:	0.63 mg/ml

Immunohistochemistry Image:



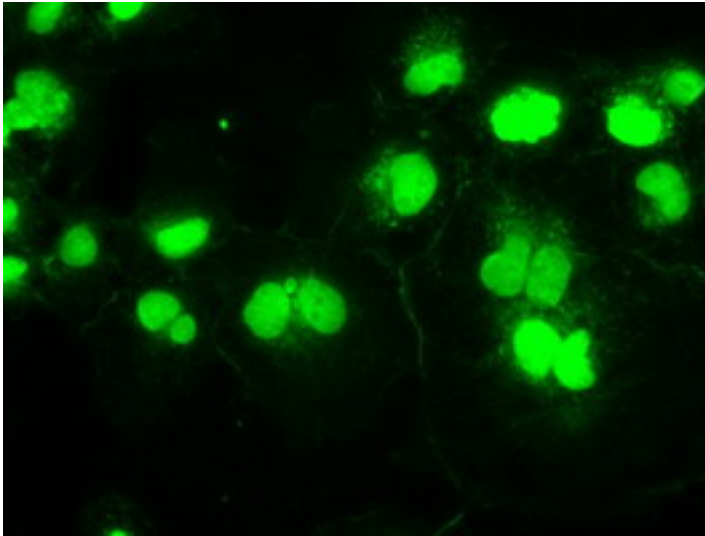
Human Colon: Formalin-Fixed, Paraffin-Embedded (FFPE)

Immunofluorescence Image:



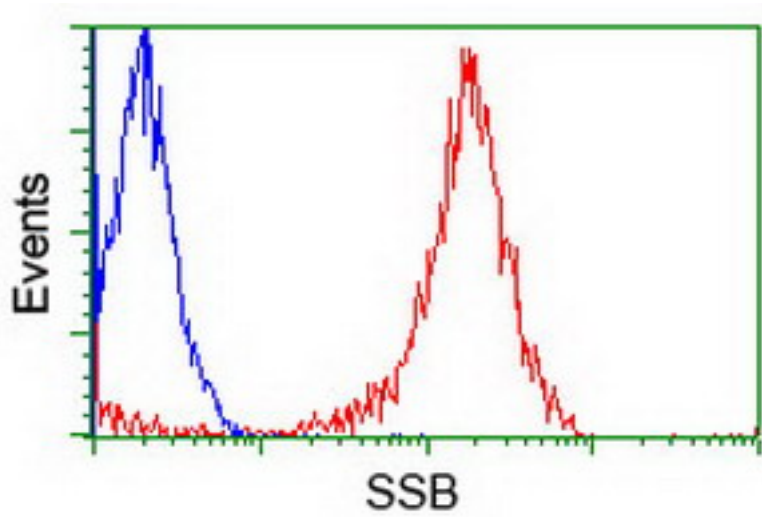
Immunofluorescent staining of A549 cells using anti-SSB mouse monoclonal antibody.

Immunofluorescence Image:



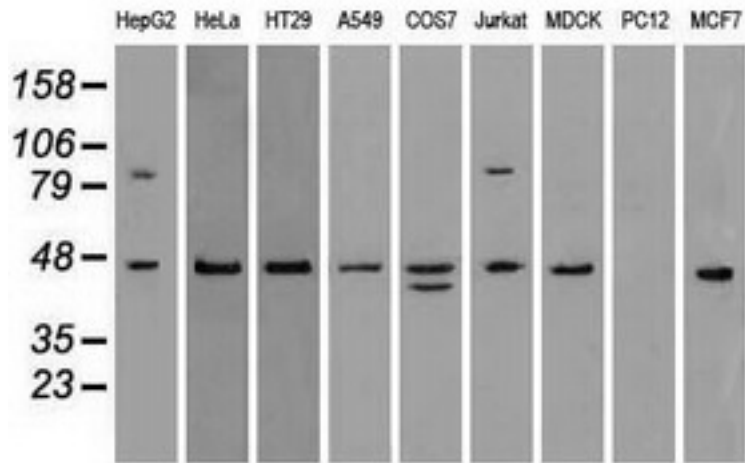
Anti-SSB mouse monoclonal antibody immunofluorescent staining of COS7 cells transiently transfected by pCMV6-ENTRY SSB.

Flow Cytometry Image:



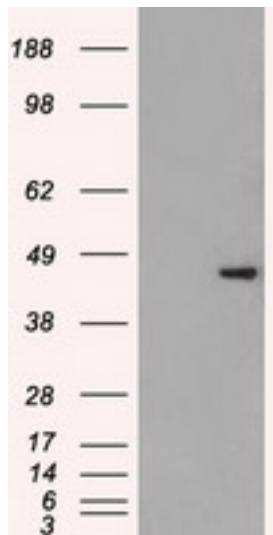
Flow cytometry of Jurkat cells, using anti-SSB antibody (Red), compared to a nonspecific negative control antibody (Blue).

Western Blot Image:



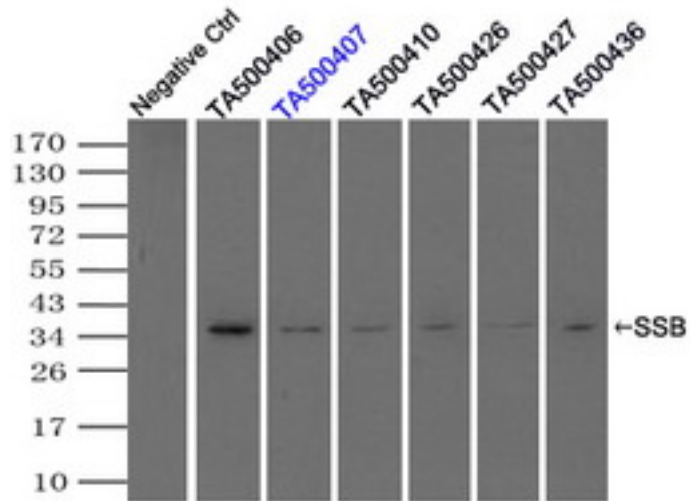
Western blot of extracts (35 ug) from 9 different cell lines by using anti-SSB monoclonal antibody.

Western Blot Image:



HEK293T cells were transfected with the pCMV6-ENTRY control (Left lane) or pCMV6-ENTRY SSB (Right lane) cDNA for 48 hrs and lysed. Equivalent amounts of cell lysates (5 ug per lane) were separated by SDS-PAGE and immunoblotted with anti-SSB.

Immunoprecipitation Image:



Immunoprecipitation(IP) of SSB by using monoclonal anti-SSB antibodies (Negative control: IP without adding anti-SSB antibody.). For each experiment, 500ul of DDK tagged SSB overexpression lysates (at 1:5 dilution with HEK293T lysate), 2 ug of anti-SSB antibody and 20ul (0.1 mg) of goat anti-mouse conjugated magnetic beads were mixed and incubated overnight. After extensive wash to remove any non-specific binding, the immuno-precipitated products were analyzed with rabbit anti-DDK polyclonal antibody.

Requested From:

Japan

Laboratory Reagent For In Vitro Research Use Only

Not for resale without prior written consent from LifeSpan BioSciences, Inc.

Created on 9/23/2014

© 2014 LifeSpan BioSciences