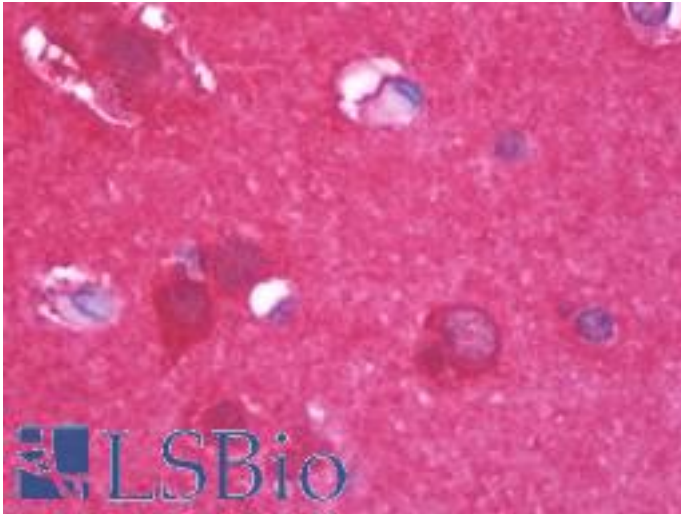


ENO2 / NSE Chicken Polyclonal Antibody - LS-B10011 - LSBio

CatalogID:	LS-B10011
Validation:	This antibody replaces catalog number LS-C149131. It has been validated for use in the following assays: IHC-P.
Target:	enolase 2 (gamma, neuronal) (ENO2)
Synonyms:	ENO2 Antibody, Enolase 2 Antibody, Enolase 2 (gamma, neuronal) Antibody, Neurone-specific enolase Antibody, Gamma-enolase Antibody, Neural enolase Antibody, Neuron specific gamma enolase Antibody, Neuron-specific enolase Antibody, NSE Antibody
Host	ENO2 antibody was produced in Chicken
Clonality:	Polyclonal
Isotype:	IgY
Antigen Type:	Synthetic peptide
Immunogen:	ENO2 / NSE antibody was raised against two synthetic peptide / keyhole limpet hemocyanin
Specificity:	These synthetic peptides corresponded to different regions of the NSE-2 gene product, but are shared between the human (NP_001966, NCBI) and rat (AAA41119, NCBI) sequences.
Reactivity:	Human, Rat
Purification:	Affinity purified
Presentation:	Phosphate-buffered (10 mM) isotonic (0.9%, w/v) saline ("PBS," pH 7.2) with sodium azide (0.02%, w/v) added as a preservative.
Recommended Storage:	May be stored at 4°C. For long-term storage, aliquot and store at 4°C. Do not freeze. Aliquots are stable for at least 12 months. Sensitive to light.
Usage Summary:	2% paraformaldehyde-fixed tissues recommended for immunocytochemistry.
Uses:	IHC - Paraffin (1:500), ICC (1:2000 - 1:5000), Western blot (1:5000 - 1:10000) (Optimal dilution to be determined by the researcher)
Size:	100 µl

Immunohistochemistry Image:



Human Brain, Cortex: Formalin-Fixed, Paraffin-Embedded (FFPE)

Requested From:

Japan

Laboratory Reagent For In Vitro Research Use Only

Not for resale without prior written consent from LifeSpan BioSciences, Inc.

Created on 9/23/2014

© 2014 LifeSpan BioSciences