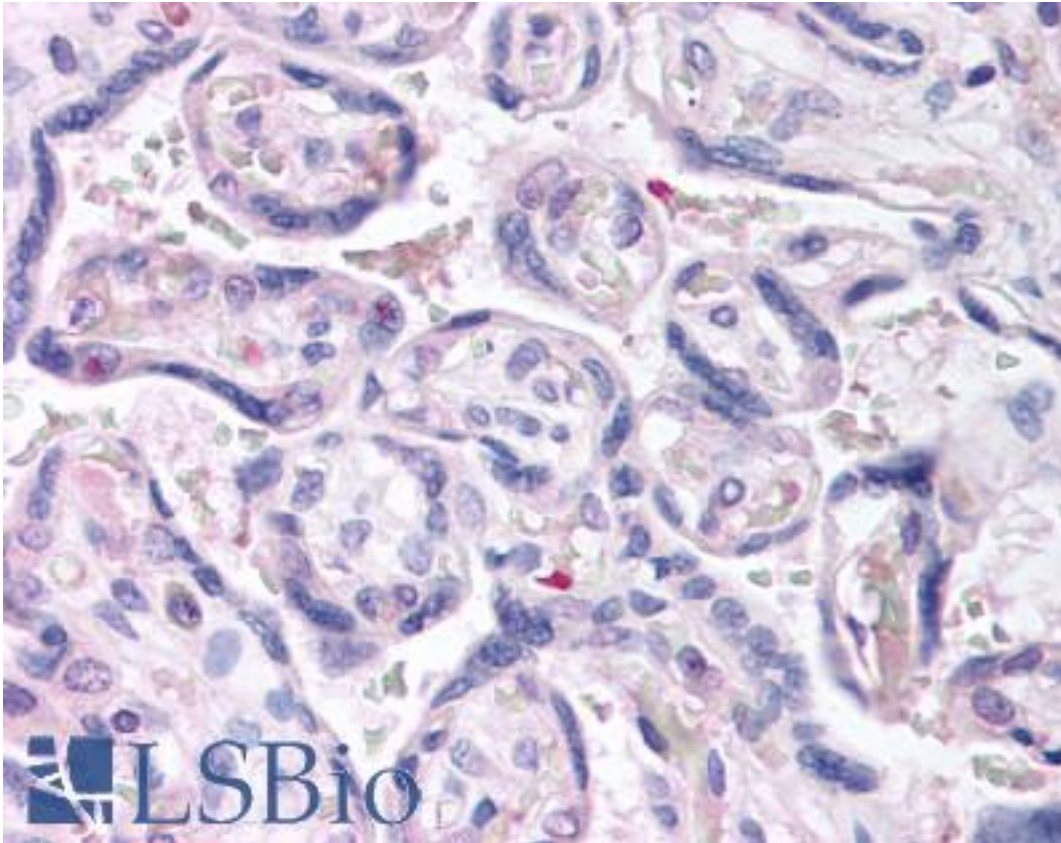


DUSP16 / MKP7 Goat anti-Human Polyclonal (N-Terminus) Antibody - LS-B1 - LSBio	
<b>CatalogID:</b>	LS-B1
<b>Target:</b>	dual specificity phosphatase 16 (DUSP16)
<b>Synonyms:</b>	DUSP16 Antibody, MAPK phosphatase-7 Antibody, MKP7 Antibody, MAP kinase phosphatase 7 Antibody, MKP-7 Antibody, KIAA1700 Antibody
<b>Family / Subfamily:</b>	Protein Phosphatase / Dual specificity MKP
<b>Host</b>	DUSP16 antibody was produced in Goat
<b>Clonality:</b>	Polyclonal
<b>Immunogen Species:</b>	DUSP16 / MKP7 antibody was raised against Human
<b>Antigen Type:</b>	Synthetic peptide
<b>Immunogen:</b>	DUSP16 / MKP7 antibody was raised against synthetic peptide AHEMIGTQIVTER-C from the N-terminus of human DUSP16 (NP_085143.1). Percent identity by BLAST analysis: Human, Gorilla, Gibbon, Monkey, Marmoset, Panda, Horse, Bovine, Dog, Hamster, Elephant (100%); Mouse, Rat, Bat (92%).
<b>Specificity:</b>	Human DUSP16.
<b>Epitope:</b>	N-Terminus
<b>Reactivity:</b>	Human, Gorilla, Gibbon, Monkey, Bovine, Dog, Hamster, Horse
<b>Predicted Reactivity:</b>	Mouse, Rat, Bat
<b>Purification:</b>	Immunoaffinity purified
<b>Presentation:</b>	Tris-buffered saline, pH 7.3, 0.5% BSA, 0.02% sodium azide
<b>Recommended Storage:</b>	Store at -20°C. Minimize freezing and thawing.
<b>Usage Summary:</b>	Immunohistochemistry: LS-B1 was validated for use in immunohistochemistry on a panel of 21 formalin-fixed, paraffin-embedded (FFPE) human tissues after heat induced antigen retrieval in pH 6.0 citrate buffer. After incubation with the primary antibody, slides were incubated with biotinylated secondary antibody, followed by alkaline phosphatase-streptavidin and chromogen. The stained slides were evaluated by a pathologist to confirm staining specificity. The optimal working concentration for LS-B1 was determined to be 2.5 ug/ml.
<b>Uses:</b>	IHC - Paraffin (2.5 µg/ml), ELISA (1:32000) (Optimal dilution to be determined by the researcher)
<b>Size:</b>	50 µg
<b>Concentration:</b>	0.5 mg/ml

**Immunohistochemistry Image:**



Anti-DUSP16 antibody IHC of human placenta. Immunohistochemistry of formalin-fixed, paraffin-embedded tissue after heat-induced antigen retrieval. Antibody LS-B1 concentration 5 ug/ml.

**Requested From:**

Japan

Laboratory Reagent For In Vitro Research Use Only

Not for resale without prior written consent from LifeSpan BioSciences, Inc.

Created on 9/23/2014

© 2014 LifeSpan BioSciences