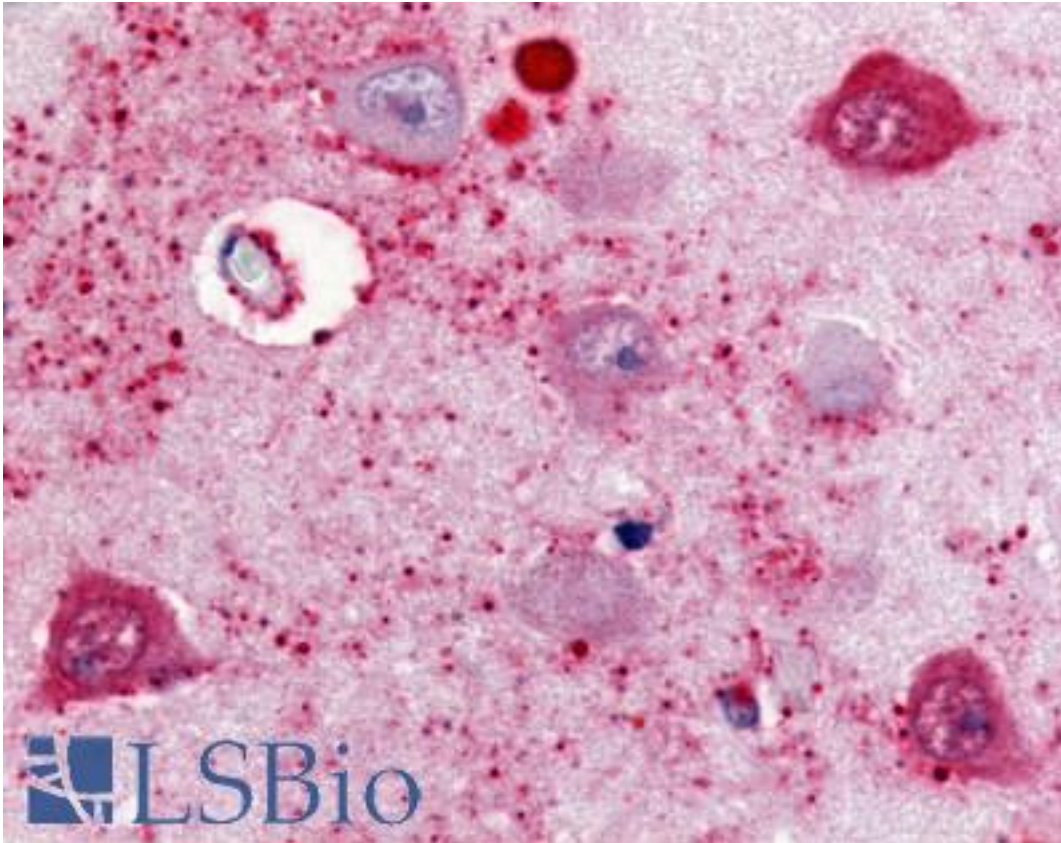


SSTR2 Rabbit anti-Human Polyclonal (Cytoplasmic Domain) Antibody - LS-A999 - LSBio

CatalogID:	LS-A999
Target:	somatostatin receptor 2 (SSTR2)
Synonyms:	SSTR2 Antibody, Somatostatin receptor 2 Antibody, SS2R Antibody, SST2 Antibody, Somatostatin receptor II Antibody, SRIF-1 Antibody, Somatostatin receptor type 2 Antibody, SS-2-R Antibody, SS2-R Antibody
Family / Subfamily:	GPCR / Somatostatin
Host	SSTR2 antibody was produced in Rabbit
Clonality:	Polyclonal
Immunogen Species:	SSTR2 antibody was raised against Human
Antigen Type:	Synthetic peptide
Immunogen:	SSTR2 antibody was raised against synthetic 18 amino acid peptide from 3rd cytoplasmic domain of human SSTR2. Percent identity with other species by BLAST analysis: Human, Gibbon, Monkey, Marmoset, Mouse, Rat, Hamster, Elephant, Panda, Bat, Bovine, Dog, Horse, Rabbit, Pig, Opossum, Guinea pig, Chicken (100%); Platypus, Lizard, Xenopus, Stickleback, Pufferfish (94%); Zebrafish (83%).
Specificity:	Human SSTR2. BLAST analysis of the peptide immunogen showed no homology with other human proteins.
Epitope:	Cytoplasmic Domain
Reactivity:	Human, Gibbon, Monkey, Mouse, Rat, Bat, Bovine, Dog, Guinea pig, Hamster, Horse, Pig, Rabbit, Chicken
Predicted Reactivity:	Xenopus
Purification:	Immunoaffinity purified
Presentation:	PBS, 0.1% sodium azide.
Recommended Storage:	Long term: -70°C; Short term: +4°C
Uses:	IHC - Paraffin (10 µg/ml) (Optimal dilution to be determined by the researcher)
Size:	50 µg
Concentration:	1 mg/ml

Immunohistochemistry Image:



Anti-SSTR2 antibody LS-A999 IHC of human brain, subiculum neurons.
Immunohistochemistry of formalin-fixed, paraffin-embedded tissue after heat-induced antigen retrieval.

Requested From:

Japan

Laboratory Reagent For In Vitro Research Use Only

Not for resale without prior written consent from LifeSpan BioSciences, Inc.

Created on 9/23/2014

© 2014 LifeSpan BioSciences