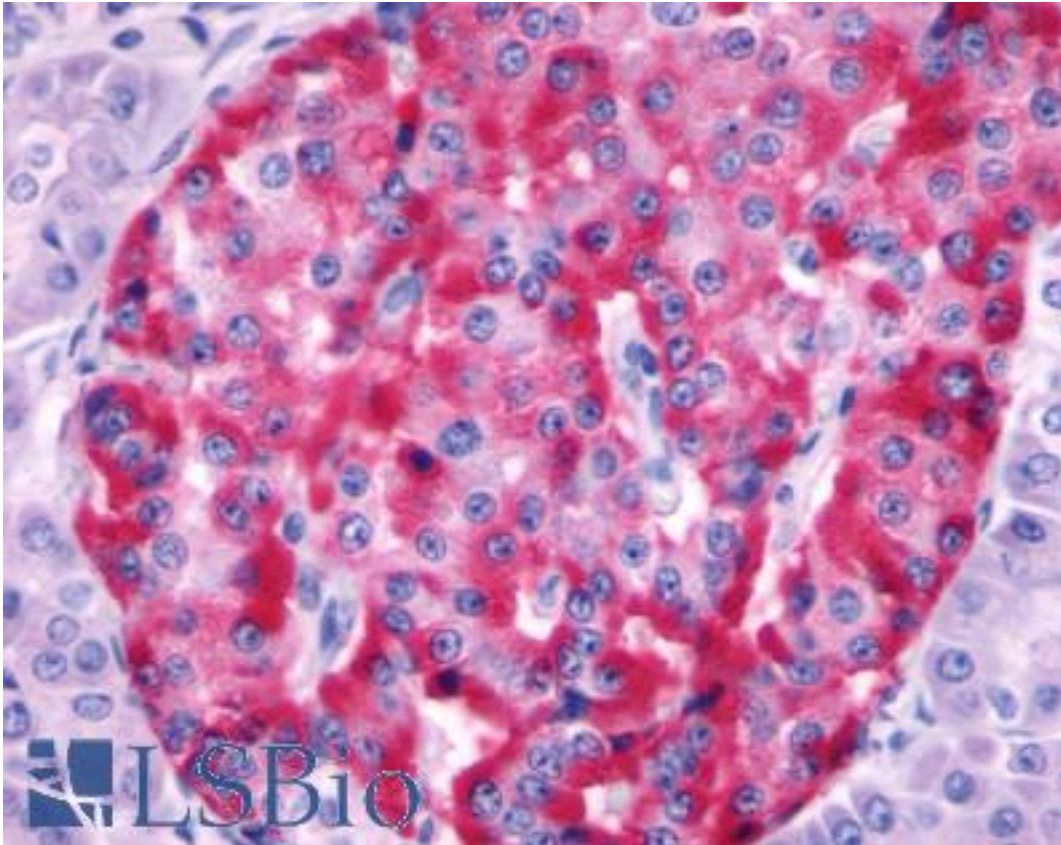


SSTR2 Rabbit anti-Human Polyclonal (Extracellular Domain) Antibody - LS-A998 - LSBio	
<b>CatalogID:</b>	LS-A998
<b>Target:</b>	somatostatin receptor 2 (SSTR2)
<b>Synonyms:</b>	SSTR2 Antibody, Somatostatin receptor 2 Antibody, SS2R Antibody, SST2 Antibody, Somatostatin receptor II Antibody, SRIF-1 Antibody, Somatostatin receptor type 2 Antibody, SS-2-R Antibody, SS2-R Antibody
<b>Family / Subfamily:</b>	GPCR / Somatostatin
<b>Host</b>	SSTR2 antibody was produced in Rabbit
<b>Clonality:</b>	Polyclonal
<b>Immunogen Species:</b>	SSTR2 antibody was raised against Human
<b>Antigen Type:</b>	Synthetic peptide
<b>Immunogen:</b>	SSTR2 antibody was raised against synthetic 17 amino acid peptide from 2nd extracellular domain of human SSTR2. Percent identity with other species by BLAST analysis: Human, Gibbon, Monkey, Marmoset, Mouse, Rat, Hamster, Panda, Bovine, Dog, Horse, Rabbit, Pig (100%); Elephant, Bat (94%); Opossum (88%).
<b>Specificity:</b>	Human SSTR2. BLAST analysis of the peptide immunogen showed no homology with other human proteins.
<b>Epitope:</b>	Extracellular Domain
<b>Reactivity:</b>	Human, Gibbon, Monkey, Mouse, Rat, Bovine, Dog, Hamster, Horse, Pig, Rabbit
<b>Predicted Reactivity:</b>	Bat
<b>Purification:</b>	Immunoaffinity purified
<b>Presentation:</b>	PBS, 0.1% sodium azide.
<b>Recommended Storage:</b>	Long term: -70°C; Short term: +4°C
<b>Uses:</b>	IHC - Paraffin (24 µg/ml) (Optimal dilution to be determined by the researcher)
<b>Size:</b>	50 µg
<b>Concentration:</b>	1 mg/ml

**Immunohistochemistry Image:**



Anti-SSTR2 antibody LS-A998 IHC of human pancreas, islet of Langerhans.  
Immunohistochemistry of formalin-fixed, paraffin-embedded tissue after heat-induced antigen retrieval.

**Requested From:**

Japan

Laboratory Reagent For In Vitro Research Use Only

Not for resale without prior written consent from LifeSpan BioSciences, Inc.

Created on 9/23/2014

© 2014 LifeSpan BioSciences