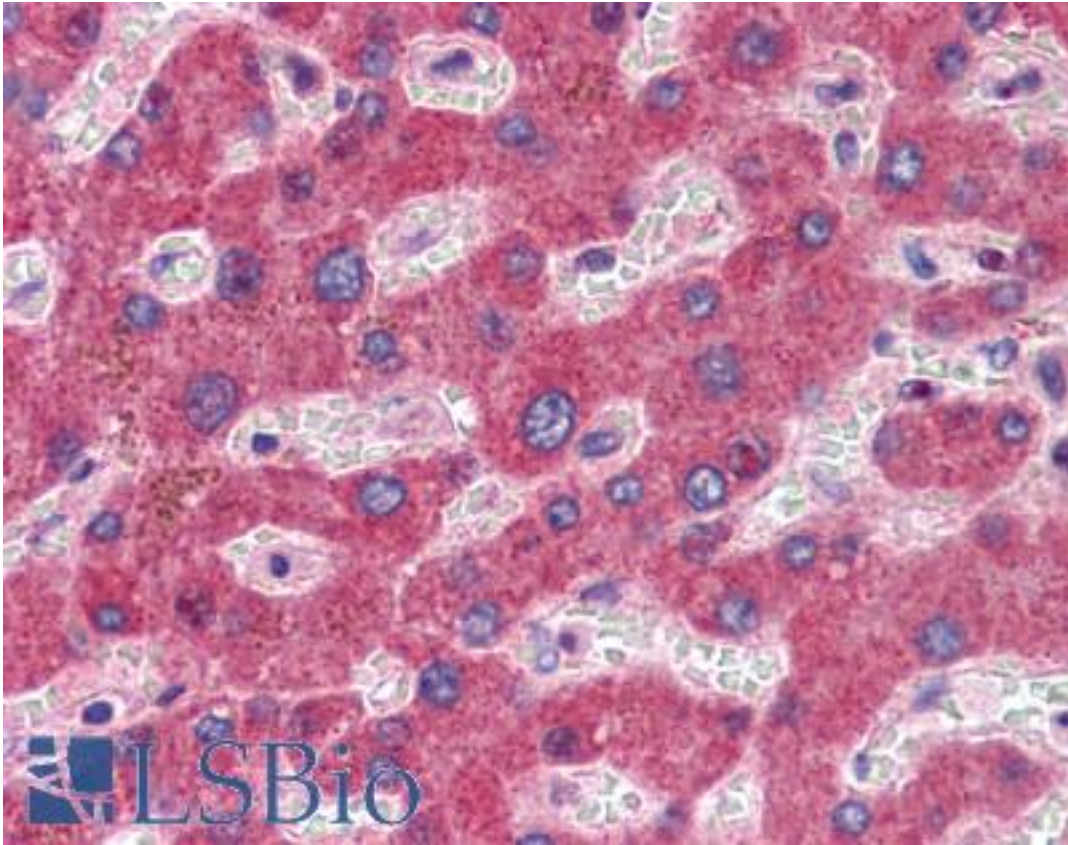


GFPT1 / GFAT Rabbit anti-Human Polyclonal (C-Terminus) Antibody - LS-A9979 - LSBio

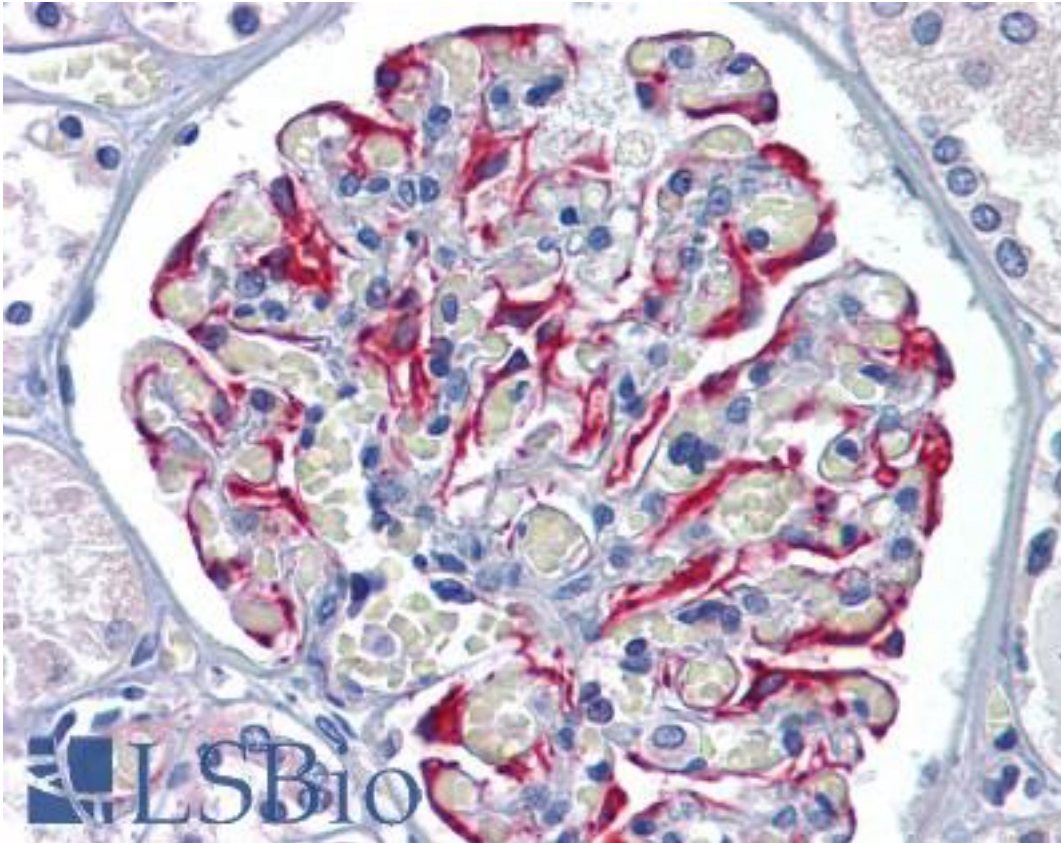
CatalogID:	LS-A9979
Target:	glutamine--fructose-6-phosphate transaminase 1 (GFPT1)
Synonyms:	GFPT1 Antibody, GFA Antibody, GFPT Antibody, GFAT Antibody, GFAT1 Antibody, GFAT1m Antibody, MSLG Antibody, CMSTA1 Antibody, GFAT 1 Antibody, GFPT1L Antibody
Host	GFPT1 antibody was produced in Rabbit
Clonality:	Polyclonal
Immunogen Species:	GFPT1 / GFAT antibody was raised against Human
Antigen Type:	Synthetic peptide
Immunogen:	GFPT1 / GFAT antibody was raised against synthetic 14 amino acid peptide from C-Terminus of human GFPT1. Percent identity with other species by BLAST analysis: Human, Chimpanzee, Gorilla, Orangutan, Gibbon, Monkey, Galago, Marmoset, Mouse, Rat, Elephant, Bovine, Horse, Pig, Opossum, Guinea pig (100%); Dog, Bat (93%); Turkey, Zebra finch, Chicken (86%).
Specificity:	Human GFPT1. BLAST analysis of the peptide immunogen showed no homology with other human proteins.
Epitope:	C-Terminus
Reactivity:	Human, Chimpanzee, Gorilla, Orangutan, Gibbon, Monkey, Mouse, Rat, Bovine, Guinea pig, Horse, Pig
Predicted Reactivity:	Bat, Dog
Purification:	Immunoaffinity purified
Presentation:	PBS, 0.1% sodium azide.
Recommended Storage:	Long term: -70°C; Short term: +4°C
Uses:	IHC - Paraffin (2.5 - 5 µg/ml) (Optimal dilution to be determined by the researcher)
Size:	50 µg
Concentration:	1 mg/ml

Immunohistochemistry Image:



Anti-GFPT1 antibody LS-A9979 IHC of human liver. Immunohistochemistry of formalin-fixed, paraffin-embedded tissue after heat-induced antigen retrieval.

Immunohistochemistry Image:



Anti-GFPT1 antibody LS-A9979 IHC of human kidney. Immunohistochemistry of formalin-fixed, paraffin-embedded tissue after heat-induced antigen retrieval.

Requested From:

Japan

Laboratory Reagent For In Vitro Research Use Only

Not for resale without prior written consent from LifeSpan BioSciences, Inc.

Created on 9/23/2014

© 2014 LifeSpan BioSciences