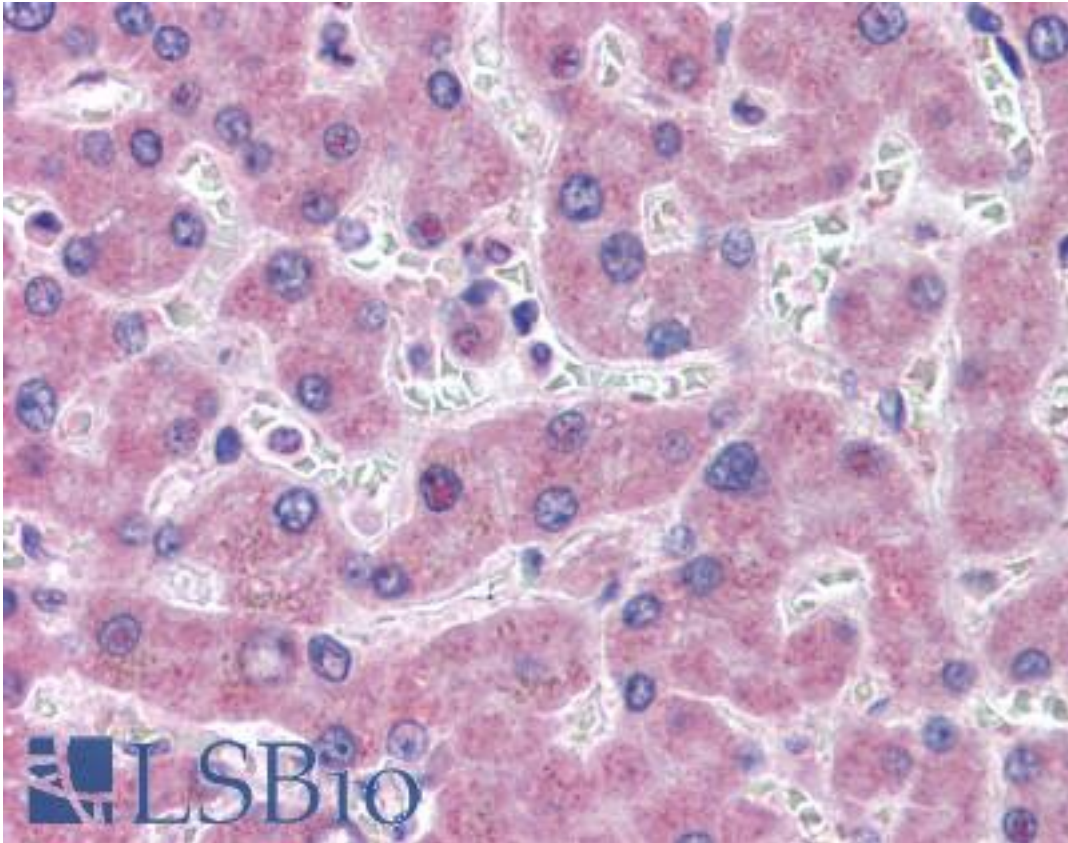


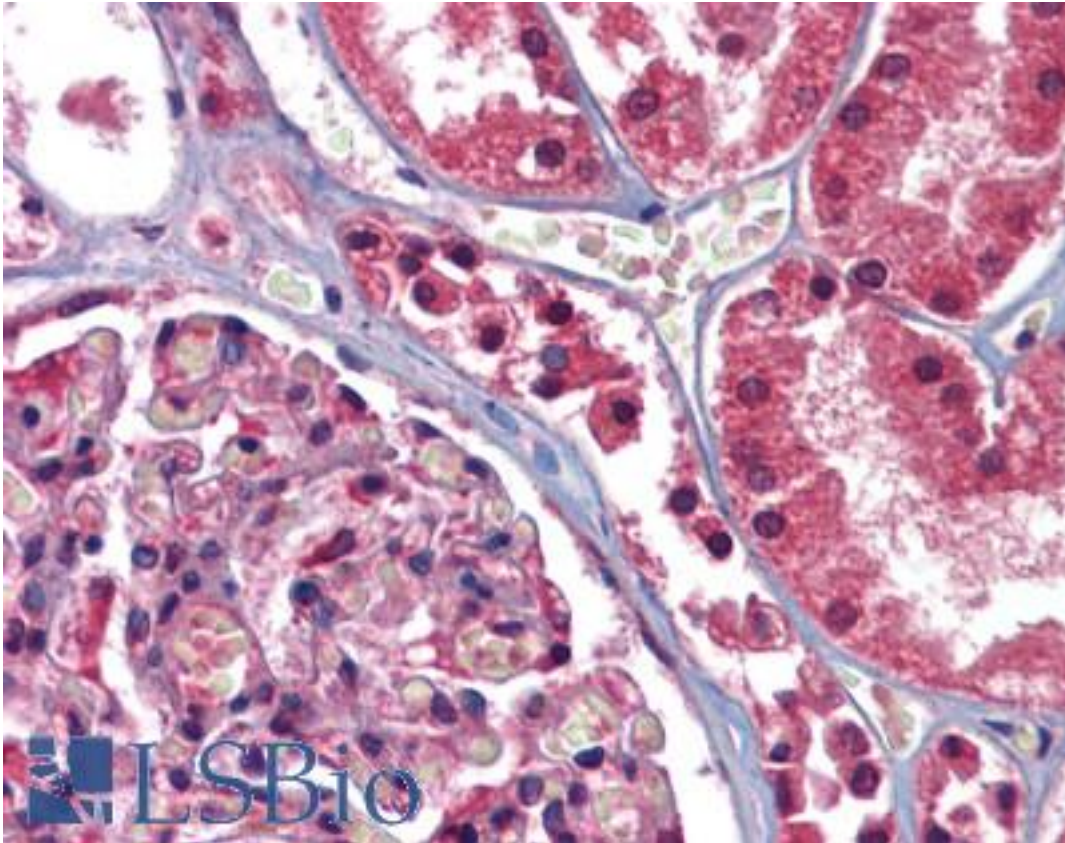
GFPT1 / GFAT Rabbit anti-Human Polyclonal (N-Terminus) Antibody - LS-A9977 - LSBio	
CatalogID:	LS-A9977
Target:	glutamine--fructose-6-phosphate transaminase 1 (GFPT1)
Synonyms:	GFPT1 Antibody, GFA Antibody, GFPT Antibody, GFAT Antibody, GFAT1 Antibody, GFAT1m Antibody, MSLG Antibody, CMSTA1 Antibody, GFAT 1 Antibody, GFPT1L Antibody
Host	GFPT1 antibody was produced in Rabbit
Clonality:	Polyclonal
Immunogen Species:	GFPT1 / GFAT antibody was raised against Human
Antigen Type:	Synthetic peptide
Immunogen:	GFPT1 / GFAT antibody was raised against synthetic 12 amino acid peptide from N-Terminus of human GFPT1. Percent identity with other species by BLAST analysis: Human, Chimpanzee, Gorilla, Orangutan, Gibbon, Monkey, Galago, Marmoset, Mouse, Rat, Elephant, Panda, Bovine, Dog, Bat, Horse, Pig, Opossum, Guinea pig, Zebra finch, Chicken (100%); Turkey, Platypus (92%).
Specificity:	Human GFPT1. BLAST analysis of the peptide immunogen showed no homology with other human proteins.
Epitope:	N-Terminus
Reactivity:	Human, Chimpanzee, Gorilla, Orangutan, Gibbon, Monkey, Mouse, Rat, Bat, Bovine, Dog, Guinea pig, Horse, Pig, Chicken
Purification:	Immunoaffinity purified
Presentation:	PBS, 0.1% sodium azide.
Recommended Storage:	Long term: -70°C; Short term: +4°C
Uses:	IHC - Paraffin (2.5 - 5 µg/ml) (Optimal dilution to be determined by the researcher)
Size:	50 µg
Concentration:	1 mg/ml

Immunohistochemistry Image:



Anti-GFPT1 antibody LS-A9977 IHC of human liver. Immunohistochemistry of formalin-fixed, paraffin-embedded tissue after heat-induced antigen retrieval.

Immunohistochemistry Image:



Anti-GFPT1 antibody LS-A9977 IHC of human kidney. Immunohistochemistry of formalin-fixed, paraffin-embedded tissue after heat-induced antigen retrieval.

Requested From:

Japan

Laboratory Reagent For In Vitro Research Use Only

Not for resale without prior written consent from LifeSpan BioSciences, Inc.

Created on 9/23/2014

© 2014 LifeSpan BioSciences