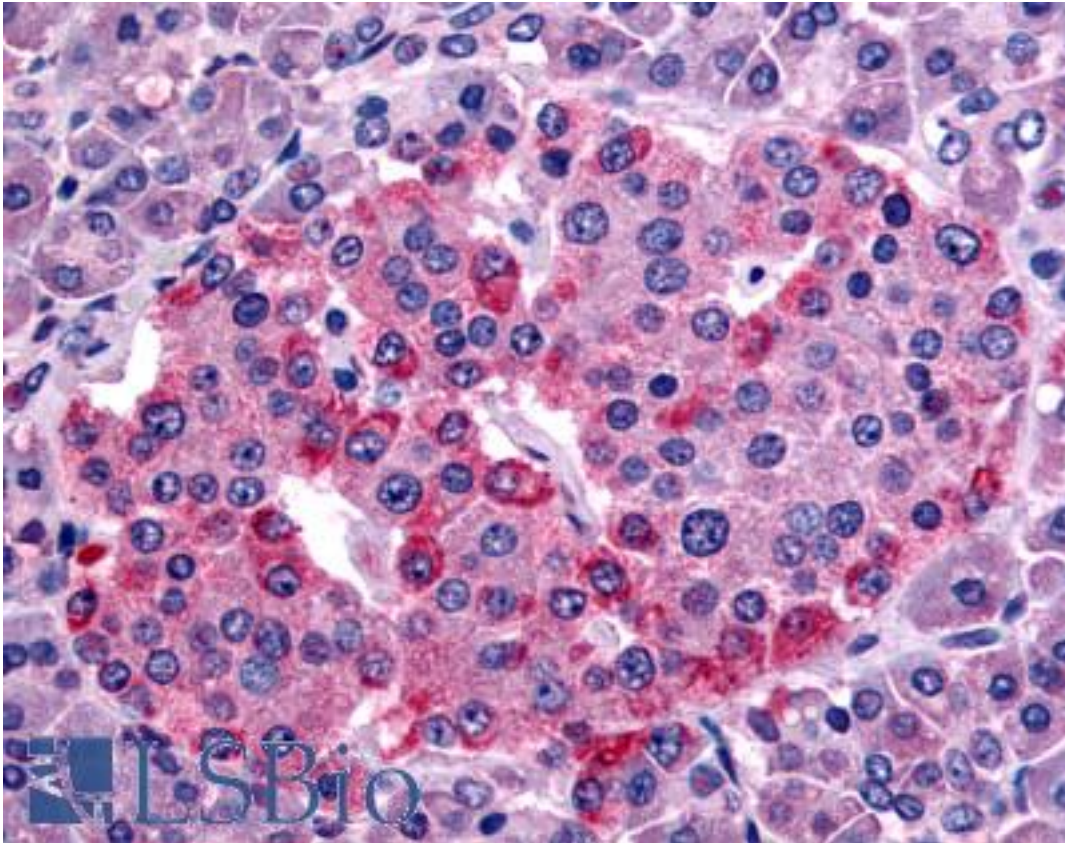


SSTR1 Rabbit anti-Human Polyclonal (C-Terminus) Antibody - LS-A997 - LSBio

CatalogID:	LS-A997
Target:	somatostatin receptor 1 (SSTR1)
Synonyms:	SSTR1 Antibody, Somatostatin receptor type 1 Antibody, SS1-R Antibody, SS1R Antibody, Somatostatin receptor 1 Antibody, SRIF-2 Antibody, Sst1 receptor Antibody, SS-1-R Antibody, Sst1 Antibody
Family / Subfamily:	GPCR / Somatostatin
Host	SSTR1 antibody was produced in Rabbit
Clonality:	Polyclonal
Immunogen Species:	SSTR1 antibody was raised against Human
Antigen Type:	Synthetic peptide
Immunogen:	SSTR1 antibody was raised against synthetic 19 amino acid peptide from C-terminus of human SSTR1. Percent identity with other species by BLAST analysis: Human, Monkey, Mouse, Rat, Sheep, Goat, Bovine, Bat, Horse, Rabbit, Pig (100%); Hamster, Elephant (95%).
Specificity:	Human SSTR1. BLAST analysis of the peptide immunogen showed no homology with other human proteins.
Epitope:	C-Terminus
Reactivity:	Human, Monkey, Mouse, Rat, Bat, Bovine, Goat, Horse, Pig, Rabbit, Sheep
Predicted Reactivity:	Hamster
Purification:	Immunoaffinity purified
Presentation:	PBS, 0.1% sodium azide.
Recommended Storage:	Long term: -70°C; Short term: +4°C
Uses:	IHC - Paraffin (10 µg/ml) (Optimal dilution to be determined by the researcher)
Size:	50 µg
Concentration:	1 mg/ml

Immunohistochemistry Image:



Anti-SSTR1 antibody LS-A997 IHC of human pancreas, islet. Immunohistochemistry of formalin-fixed, paraffin-embedded tissue after heat-induced antigen retrieval.

Requested From:

Japan

Laboratory Reagent For In Vitro Research Use Only

Not for resale without prior written consent from LifeSpan BioSciences, Inc.

Created on 9/23/2014

© 2014 LifeSpan BioSciences