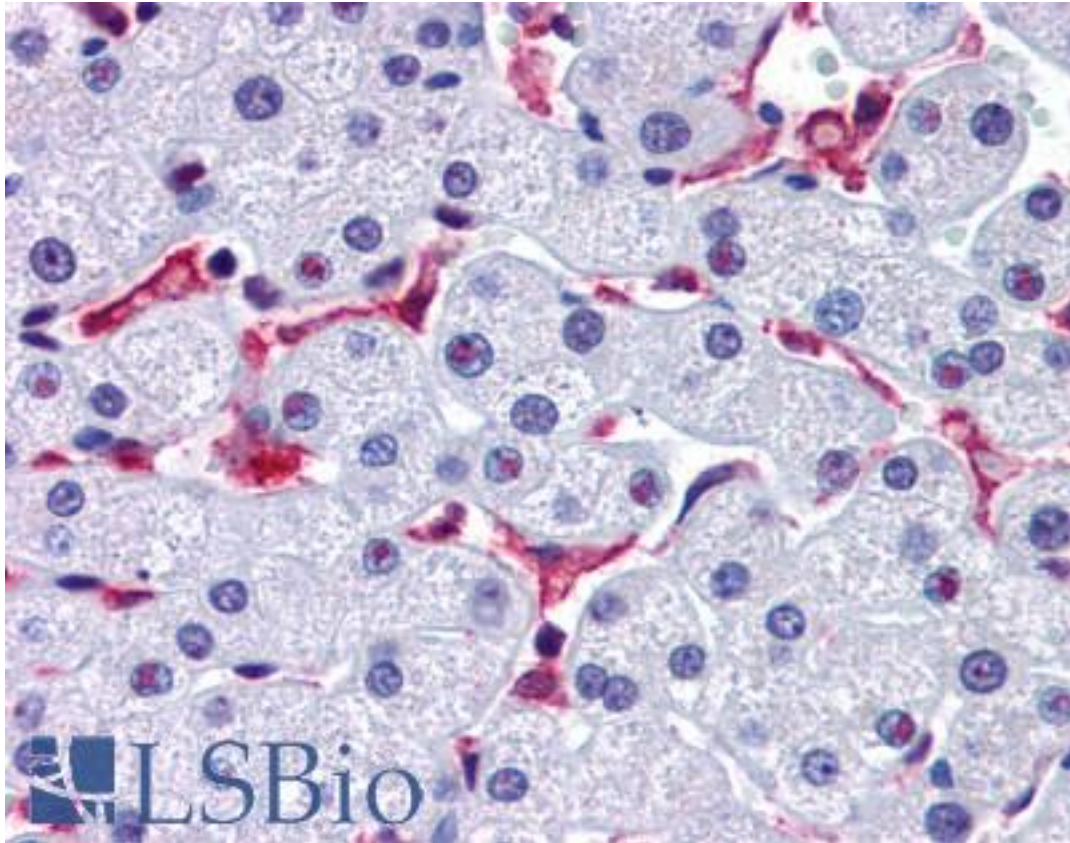


Prominin 2 / PROM2 Rabbit anti-Human Polyclonal (Internal) Antibody - LS-A9927 - LSBio

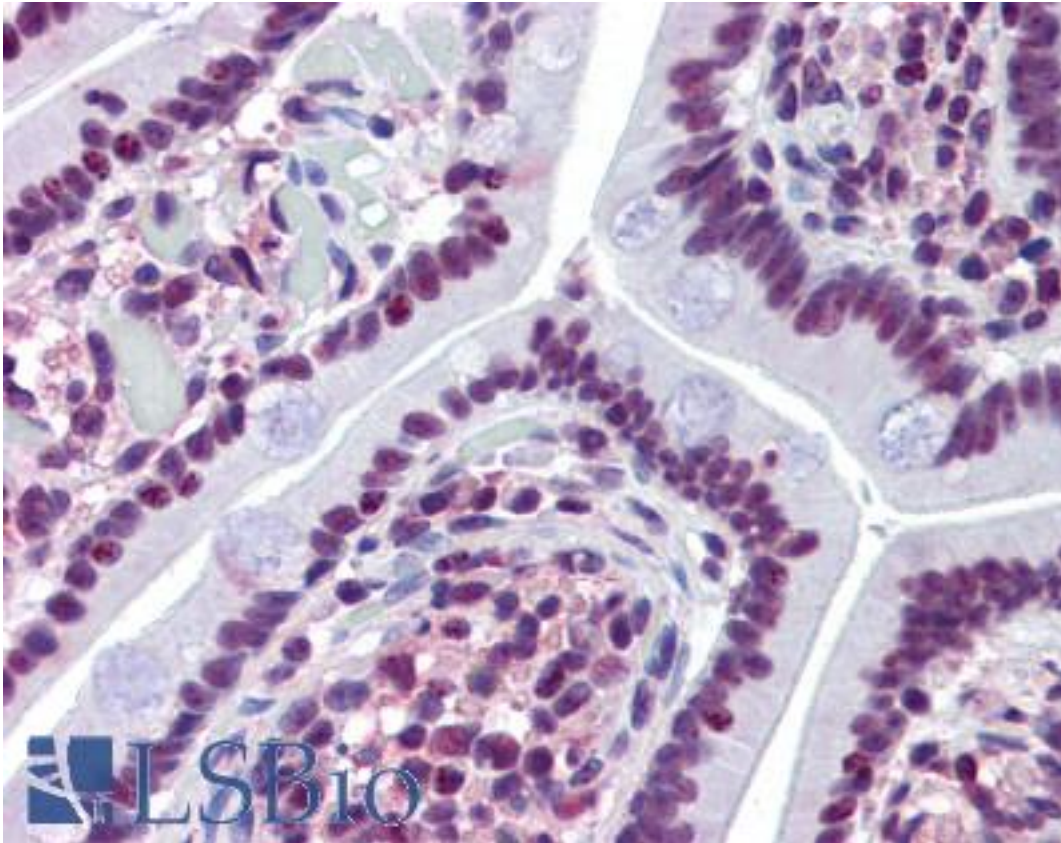
CatalogID:	LS-A9927
Target:	prominin 2 (PROM2)
Synonyms:	PROM2 Antibody, HPROML2 Antibody, PROML2 Antibody, Prominin-like protein 2 Antibody, Prominin-related protein Antibody, PROM-2 Antibody, Prominin 2 Antibody, Prominin-2 Antibody
Host	PROM2 antibody was produced in Rabbit
Clonality:	Polyclonal
Immunogen Species:	Prominin 2 / PROM2 antibody was raised against Human
Antigen Type:	Synthetic peptide
Immunogen:	Prominin 2 / PROM2 antibody was raised against synthetic 16 amino acid peptide from internal region of human PROM2. Percent identity with other species by BLAST analysis: Human, Chimpanzee, Gorilla, Orangutan, Gibbon, Monkey (100%); Horse (94%); Panda, Dog, Rabbit (88%); Galago, Hamster, Bat, Pig (81%).
Specificity:	Human PROM2. BLAST analysis of the peptide immunogen showed no homology with other human proteins.
Epitope:	Internal
Reactivity:	Human, Chimpanzee, Gorilla, Orangutan, Gibbon, Monkey
Predicted Reactivity:	Horse
Purification:	Immunoaffinity purified
Presentation:	PBS, 0.1% sodium azide.
Recommended Storage:	Long term: -70°C; Short term: +4°C
Usage Summary:	Antigen retrieval with HIER and sodium citrate at pH 6.0 is required for Immunohistochemistry using formalin-fixed paraffin-embedded human tissues.
Uses:	IHC - Paraffin (2.5 - 5 µg/ml) (Optimal dilution to be determined by the researcher)
Size:	50 µg
Concentration:	1 mg/ml

Immunohistochemistry Image:



Anti-PROM2 antibody LS-A9927 IHC of human liver. Immunohistochemistry of formalin-fixed, paraffin-embedded tissue after heat-induced antigen retrieval.

Immunohistochemistry Image:



Anti-PROM2 antibody LS-A9927 IHC of human small intestine. Immunohistochemistry of formalin-fixed, paraffin-embedded tissue after heat-induced antigen retrieval.

Requested From:

Japan

Laboratory Reagent For In Vitro Research Use Only

Not for resale without prior written consent from LifeSpan BioSciences, Inc.

Created on 9/23/2014

© 2014 LifeSpan BioSciences