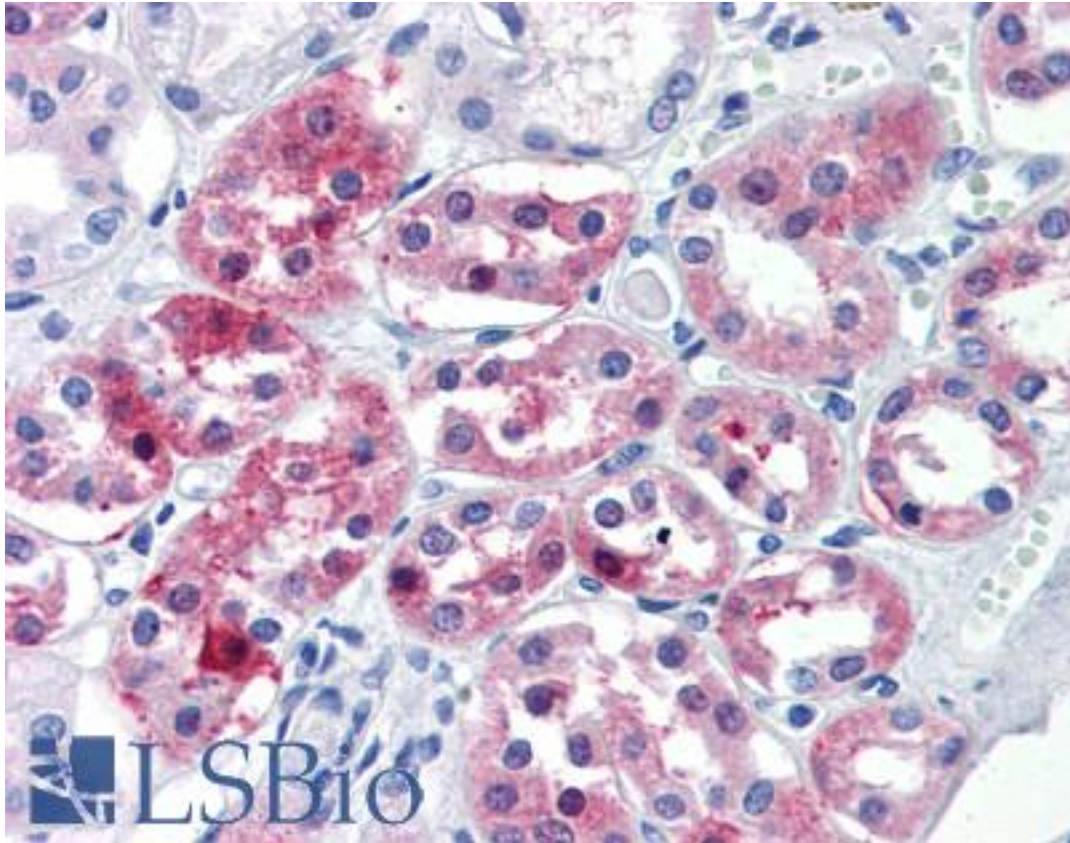


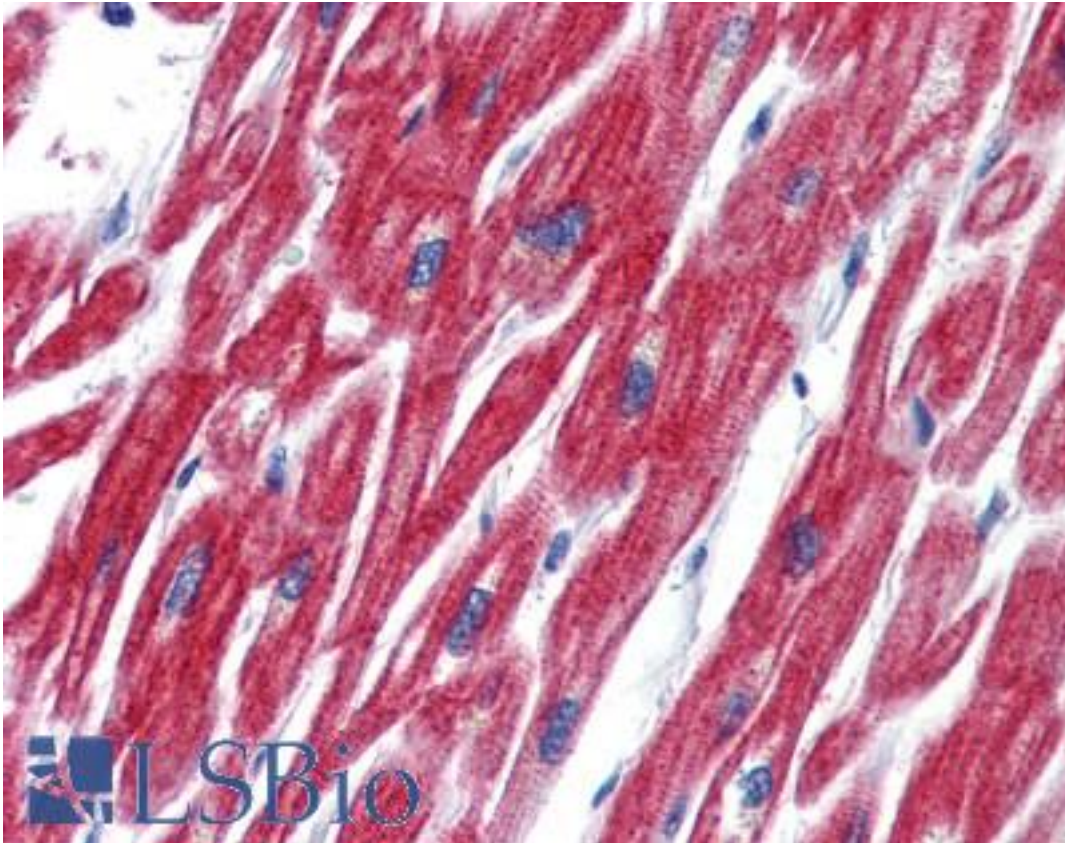
OLFM4 / Olfactomedin 4 Rabbit anti-Human Polyclonal (Internal) Antibody - LS-A9926 - LSBio	
<b>CatalogID:</b>	LS-A9926
<b>Target:</b>	olfactomedin 4 (OLFM4)
<b>Synonyms:</b>	OLFM4 Antibody, Antiapoptotic protein GW112 Antibody, HOLfD Antibody, HGC-1 Antibody, GW112 Antibody, OlfD Antibody, OLM4 Antibody, UNQ362 Antibody, Olfactomedin 4 Antibody, Olfactomedin-4 Antibody, BA209J19.1 Antibody, GC1 Antibody, HCG-1 Antibody
<b>Family / Subfamily:</b>	Olfactomedin / not assigned-Olfactomedin
<b>Host</b>	OLFM4 antibody was produced in Rabbit
<b>Clonality:</b>	Polyclonal
<b>Immunogen Species:</b>	OLFM4 / Olfactomedin 4 antibody was raised against Human
<b>Antigen Type:</b>	Synthetic peptide
<b>Immunogen:</b>	OLFM4 / Olfactomedin 4 antibody was raised against synthetic 16 amino acid peptide from internal region of human OLFM4. Percent identity with other species by BLAST analysis: Human, Chimpanzee, Gorilla, Orangutan, Gibbon, Monkey (100%); Galago, Marmoset (94%); Panda, Dog, Rabbit, Opossum (88%); Mouse, Rat, Horse (81%).
<b>Specificity:</b>	Human OLFM4. BLAST analysis of the peptide immunogen showed no homology with other human proteins.
<b>Epitope:</b>	Internal
<b>Reactivity:</b>	Human, Chimpanzee, Gorilla, Orangutan, Gibbon
<b>Predicted Reactivity:</b>	Monkey
<b>Purification:</b>	Immunoaffinity purified
<b>Presentation:</b>	PBS, 0.1% sodium azide.
<b>Recommended Storage:</b>	Long term: -70°C; Short term: +4°C
<b>Usage Summary:</b>	Antigen retrieval with HIER and sodium citrate at pH 6.0 is required for Immunohistochemistry using formalin-fixed paraffin-embedded human tissues.
<b>Uses:</b>	IHC - Paraffin (20 µg/ml) (Optimal dilution to be determined by the researcher)
<b>Size:</b>	50 µg
<b>Concentration:</b>	1 mg/ml

**Immunohistochemistry Image:**



Anti-OLFM4 antibody LS-A9926 IHC of human kidney. Immunohistochemistry of formalin-fixed, paraffin-embedded tissue after heat-induced antigen retrieval.

**Immunohistochemistry Image:**



Anti-OLFM4 antibody LS-A9926 IHC of human heart. Immunohistochemistry of formalin-fixed, paraffin-embedded tissue after heat-induced antigen retrieval.

**Requested From:**

Japan

Laboratory Reagent For In Vitro Research Use Only

Not for resale without prior written consent from LifeSpan BioSciences, Inc.

Created on 9/23/2014

© 2014 LifeSpan BioSciences