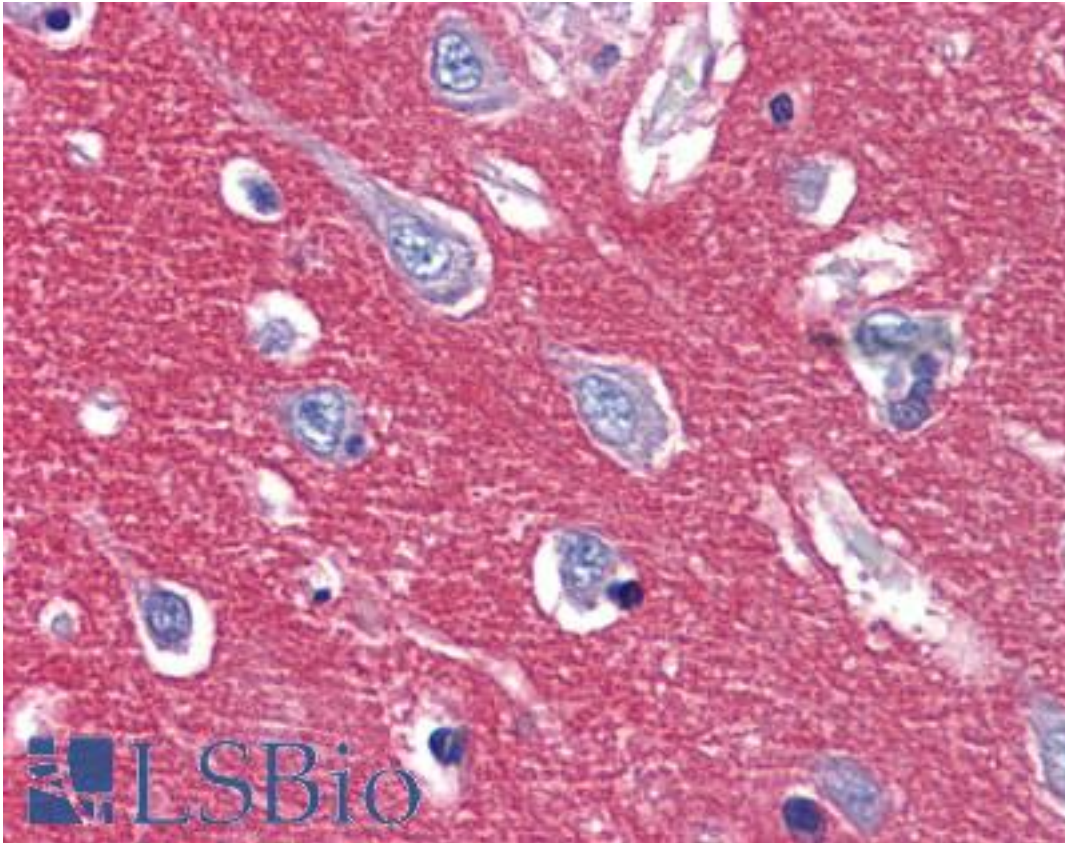


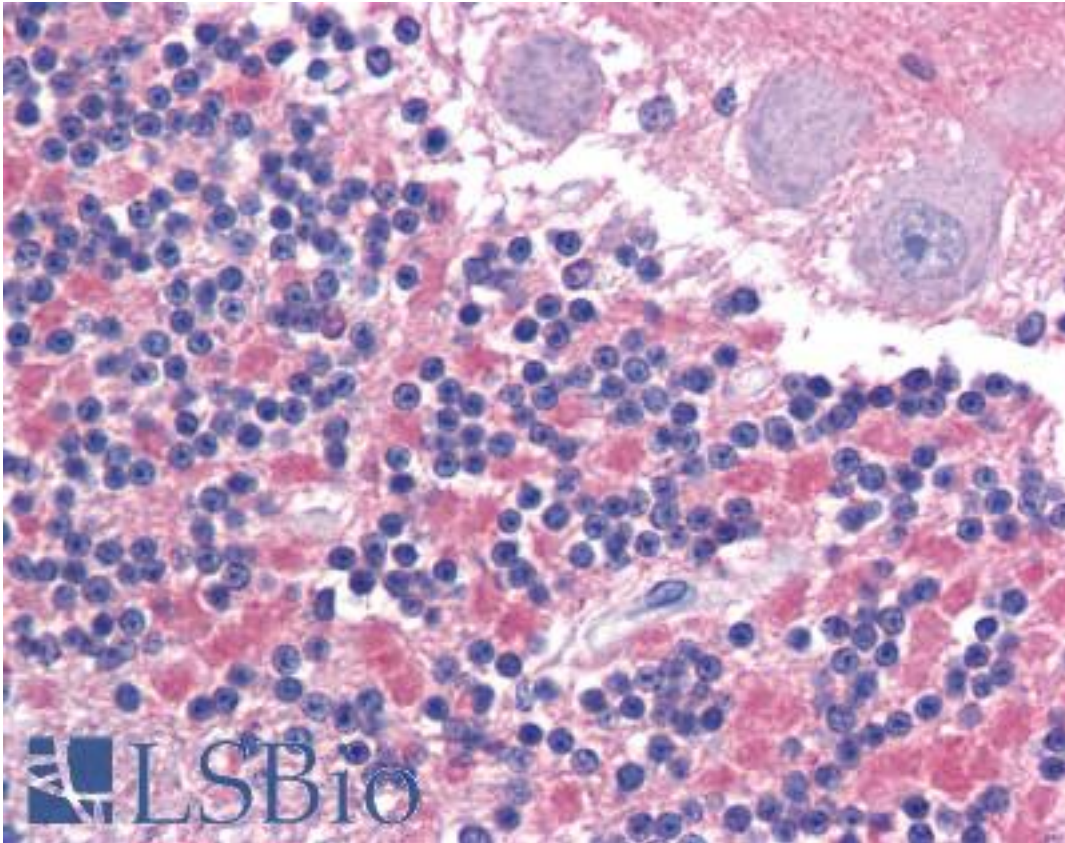
CADM2 Rabbit anti-Human Polyclonal (Internal) Antibody - LS-A9923 - LSBio	
CatalogID:	LS-A9923
Target:	cell adhesion molecule 2 (CADM2)
Synonyms:	CADM2 Antibody, Cell adhesion molecule 2 Antibody, IGSF4D Antibody, Necl-3 Antibody, Nectin-like 3 Antibody, SynCAM2 Antibody, Nectin-like protein 3 Antibody, SynCAM 2 Antibody, NECL3 Antibody
Host	CADM2 antibody was produced in Rabbit
Clonality:	Polyclonal
Immunogen Species:	CADM2 antibody was raised against Human
Antigen Type:	Synthetic peptide
Immunogen:	CADM2 antibody was raised against synthetic 17 amino acid peptide from internal region of human CADM2. Percent identity with other species by BLAST analysis: Human, Chimpanzee, Gorilla, Orangutan, Gibbon, Monkey, Galago, Marmoset, Mouse, Rat, Hamster, Elephant, Panda, Bovine, Dog, Bat, Horse, Rabbit, Pig, Opossum, Guinea pig, Zebra finch, Platypus, Xenopus (100%); Turkey, Chicken (94%); Zebrafish (82%).
Specificity:	Human CADM2. BLAST analysis of the peptide immunogen showed no homology with other human proteins.
Epitope:	Internal
Reactivity:	Human, Chimpanzee, Gorilla, Orangutan, Gibbon, Monkey, Mouse, Rat, Bat, Bovine, Dog, Guinea pig, Hamster, Horse, Pig, Rabbit, Xenopus
Predicted Reactivity:	Chicken
Purification:	Immunoaffinity purified
Presentation:	PBS, 0.1% sodium azide.
Recommended Storage:	Long term: -70°C; Short term: +4°C
Usage Summary:	Antigen retrieval with HIER and sodium citrate at pH 6.0 is required for Immunohistochemistry using formalin-fixed paraffin-embedded human tissues.
Uses:	IHC - Paraffin (2.5 µg/ml) (Optimal dilution to be determined by the researcher)
Size:	50 µg
Concentration:	1 mg/ml

Immunohistochemistry Image:



Anti-CADM2 antibody LS-A9923 IHC of human brain, cortex. Immunohistochemistry of formalin-fixed, paraffin-embedded tissue after heat-induced antigen retrieval.

Immunohistochemistry Image:



Anti-CADM2 antibody LS-A9923 IHC of human brain, cerebellum. Immunohistochemistry of formalin-fixed, paraffin-embedded tissue after heat-induced antigen retrieval.

Requested From:

Japan

Laboratory Reagent For In Vitro Research Use Only

Not for resale without prior written consent from LifeSpan BioSciences, Inc.

Created on 9/23/2014

© 2014 LifeSpan BioSciences