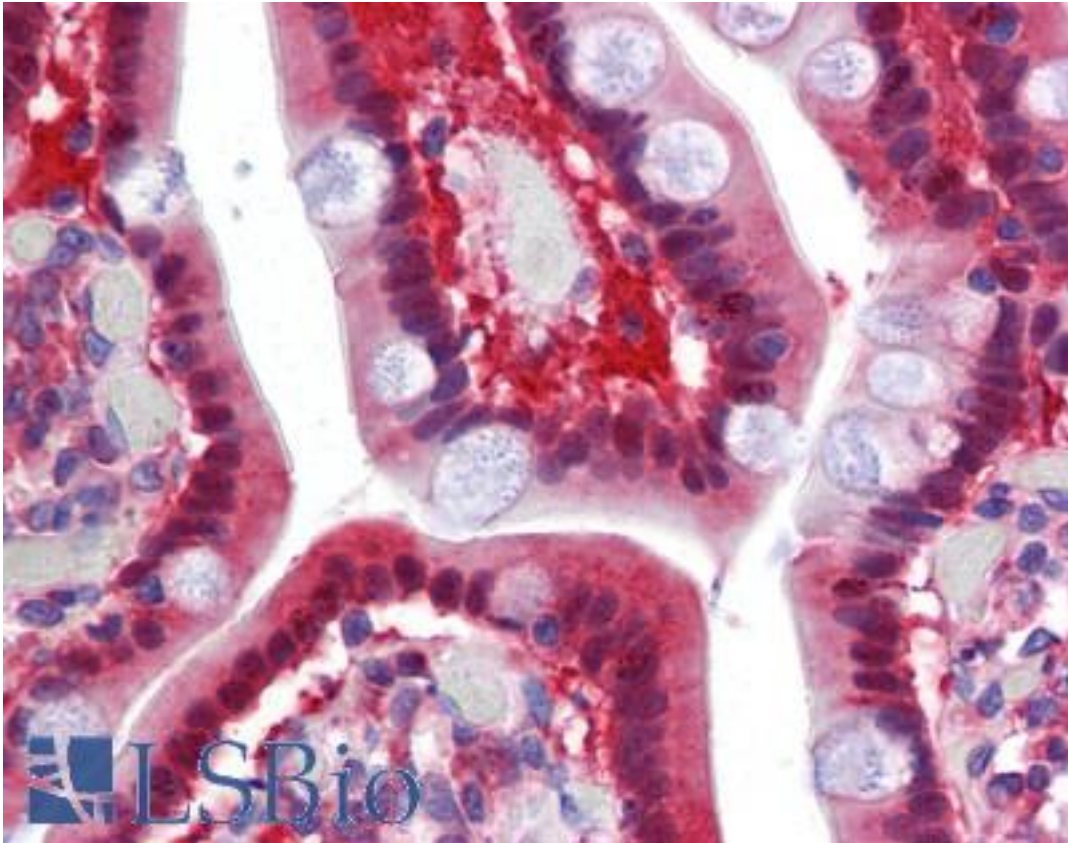


TMPRSS4 Rabbit anti-Human Polyclonal (Internal) Antibody - LS-A9908 - LSBio

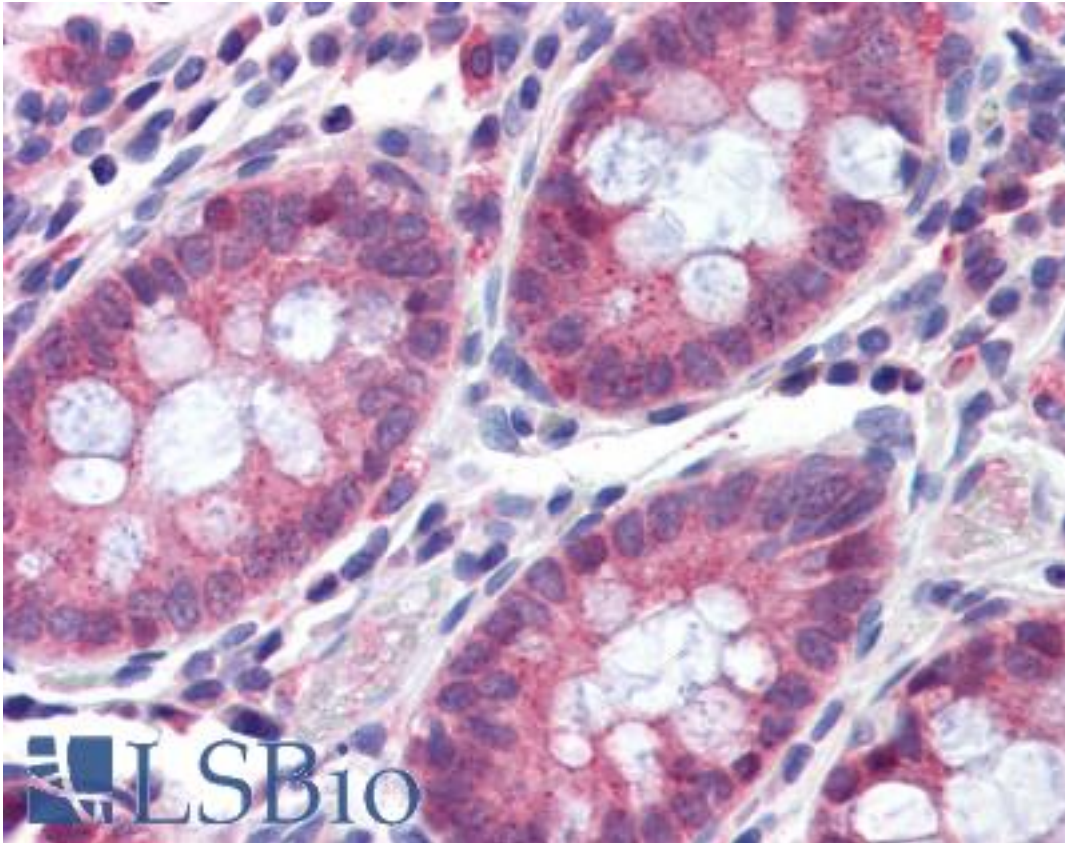
CatalogID:	LS-A9908
Target:	transmembrane protease, serine 4 (TMPRSS4)
Synonyms:	TMPRSS4 Antibody, CAPH2 Antibody, Channel-activating protease 2 Antibody, MT-SP2 Antibody
Family / Subfamily:	Protease / Serine S1
Host	TMPRSS4 antibody was produced in Rabbit
Clonality:	Polyclonal
Immunogen Species:	TMPRSS4 antibody was raised against Human
Antigen Type:	Synthetic peptide
Immunogen:	TMPRSS4 antibody was raised against synthetic 19 amino acid peptide from internal region of human TMPRSS4. Percent identity with other species by BLAST analysis: Human, Chimpanzee, Gibbon, Monkey, Marmoset (100%); Gorilla, Orangutan (95%); Dog, Horse (89%); Hamster, Elephant, Panda, Pig (84%).
Specificity:	Human TMPRSS4. BLAST analysis of the peptide immunogen showed no homology with other human proteins.
Epitope:	Internal
Reactivity:	Human, Chimpanzee, Gibbon, Monkey
Predicted Reactivity:	Gorilla, Orangutan
Purification:	Immunoaffinity purified
Presentation:	PBS, 0.1% sodium azide.
Recommended Storage:	Long term: -70°C; Short term: +4°C
Usage Summary:	Antigen retrieval with HIER and sodium citrate at pH 6.0 is required for Immunohistochemistry using formalin-fixed paraffin-embedded human tissues.
Uses:	IHC - Paraffin (5 µg/ml) (Optimal dilution to be determined by the researcher)
Size:	50 µg
Concentration:	1 mg/ml

Immunohistochemistry Image:



Anti-TMPRSS4 antibody LS-A9908 IHC of human small intestine. Immunohistochemistry of formalin-fixed, paraffin-embedded tissue after heat-induced antigen retrieval.

Immunohistochemistry Image:



Anti-TMRSS4 antibody LS-A9908 IHC of human colon. Immunohistochemistry of formalin-fixed, paraffin-embedded tissue after heat-induced antigen retrieval.

Requested From:

Japan

Laboratory Reagent For In Vitro Research Use Only

Not for resale without prior written consent from LifeSpan BioSciences, Inc.

Created on 9/23/2014

© 2014 LifeSpan BioSciences