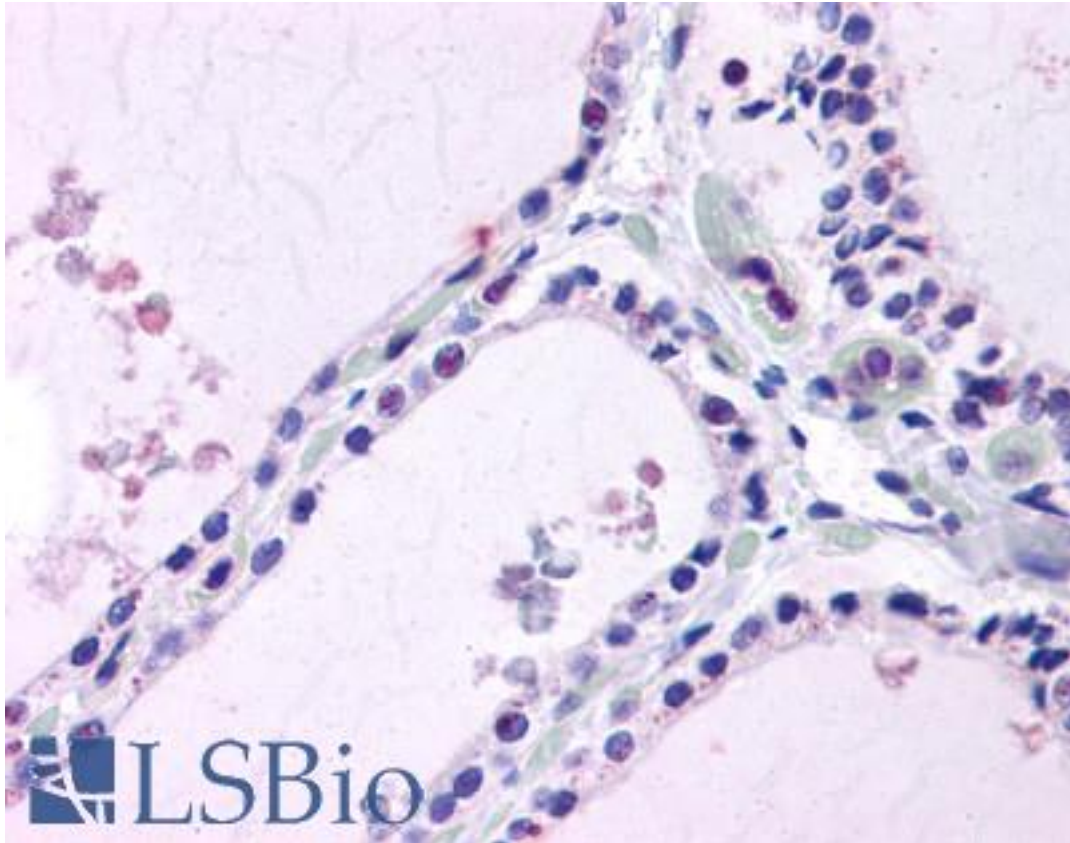


LPCAT1 / AYTL2 Rabbit anti-Human Polyclonal (Internal) Antibody - LS-A9904 - LSBio

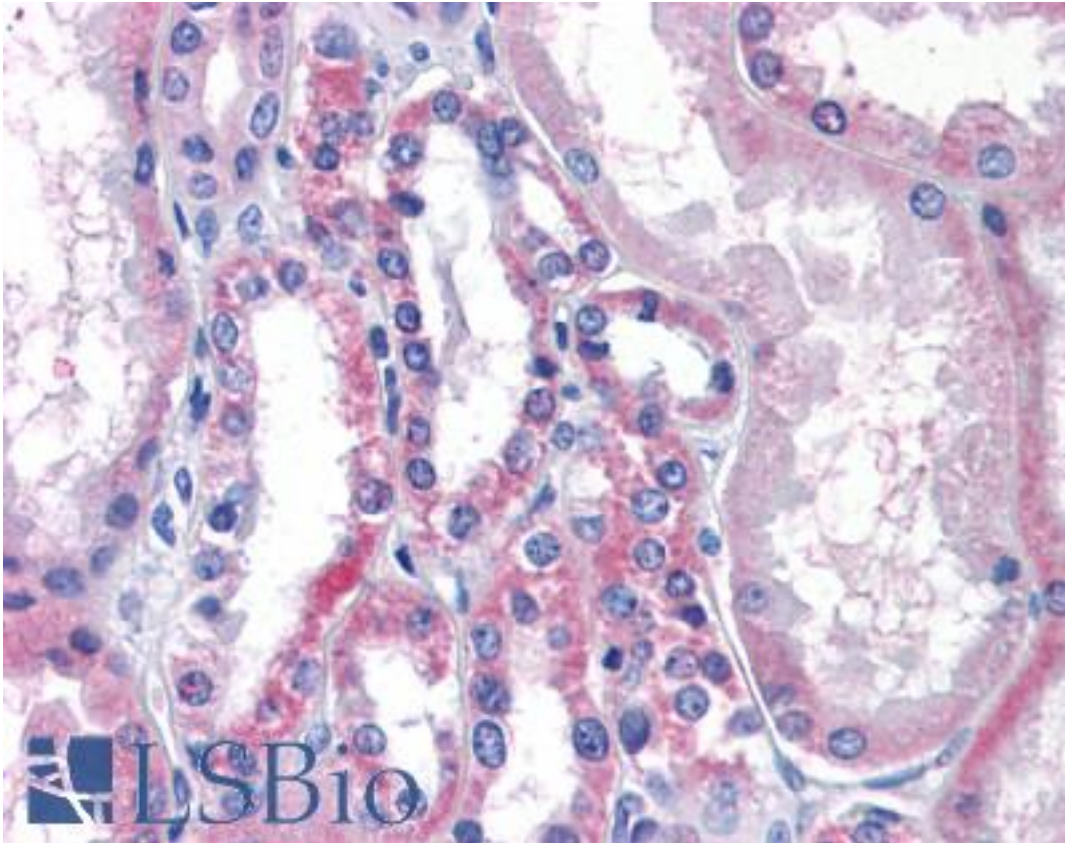
| | |
|------------------------------|---|
| CatalogID: | LS-A9904 |
| Target: | lysophosphatidylcholine acyltransferase 1 (LPCAT1) |
| Synonyms: | LPCAT1 Antibody, Acyltransferase like 2 Antibody, Acyltransferase-like 2 Antibody, AYTL2 Antibody, Lpcat Antibody, Lyso-PAF acetyltransferase Antibody, PFAAP3 Antibody, LPC acyltransferase 1 Antibody, LPCAT-1 Antibody, LysoPAFAT Antibody, LysoPC acyltransferase 1 Antibody, Regulated by phosphonoformate Antibody |
| Host | LPCAT1 antibody was produced in Rabbit |
| Clonality: | Polyclonal |
| Immunogen Species: | LPCAT1 / AYTL2 antibody was raised against Human |
| Antigen Type: | Synthetic peptide |
| Immunogen: | LPCAT1 / AYTL2 antibody was raised against synthetic 15 amino acid peptide from internal region of human LPCAT1. Percent identity with other species by BLAST analysis: Human, Gorilla, Gibbon, Monkey, Marmoset, Mouse, Rat, Dog, Hamster, Pig, Opossum, Turkey, Chicken, Platypus, Zebrafish (100%); Bat, Bovine, Panda, Xenopus, Stickleback (93%); Pufferfish (87%); Horse (80%). |
| Specificity: | Human LPCAT1. BLAST analysis of the peptide immunogen showed no homology with other human proteins, except LPCAT2 (60%). |
| Epitope: | Internal |
| Reactivity: | Human, Gorilla, Gibbon, Monkey, Mouse, Rat, Dog, Hamster, Pig, Chicken, Zebrafish |
| Predicted Reactivity: | Bat, Bovine, Xenopus |
| Purification: | Immunoaffinity purified |
| Presentation: | PBS, 0.1% sodium azide. |
| Recommended Storage: | Long term: -70°C; Short term: +4°C |
| Uses: | IHC - Paraffin (10 µg/ml) (Optimal dilution to be determined by the researcher) |
| Size: | 50 µg |
| Concentration: | 1 mg/ml |

Immunohistochemistry Image:



Anti-LPCAT1 antibody LS-A9904 IHC of human thyroid. Immunohistochemistry of formalin-fixed, paraffin-embedded tissue after heat-induced antigen retrieval.

Immunohistochemistry Image:



Anti-LPCAT1 antibody LS-A9904 IHC of human kidney. Immunohistochemistry of formalin-fixed, paraffin-embedded tissue after heat-induced antigen retrieval.

Requested From:

Japan

Laboratory Reagent For In Vitro Research Use Only

Not for resale without prior written consent from LifeSpan BioSciences, Inc.

Created on 9/23/2014

© 2014 LifeSpan BioSciences