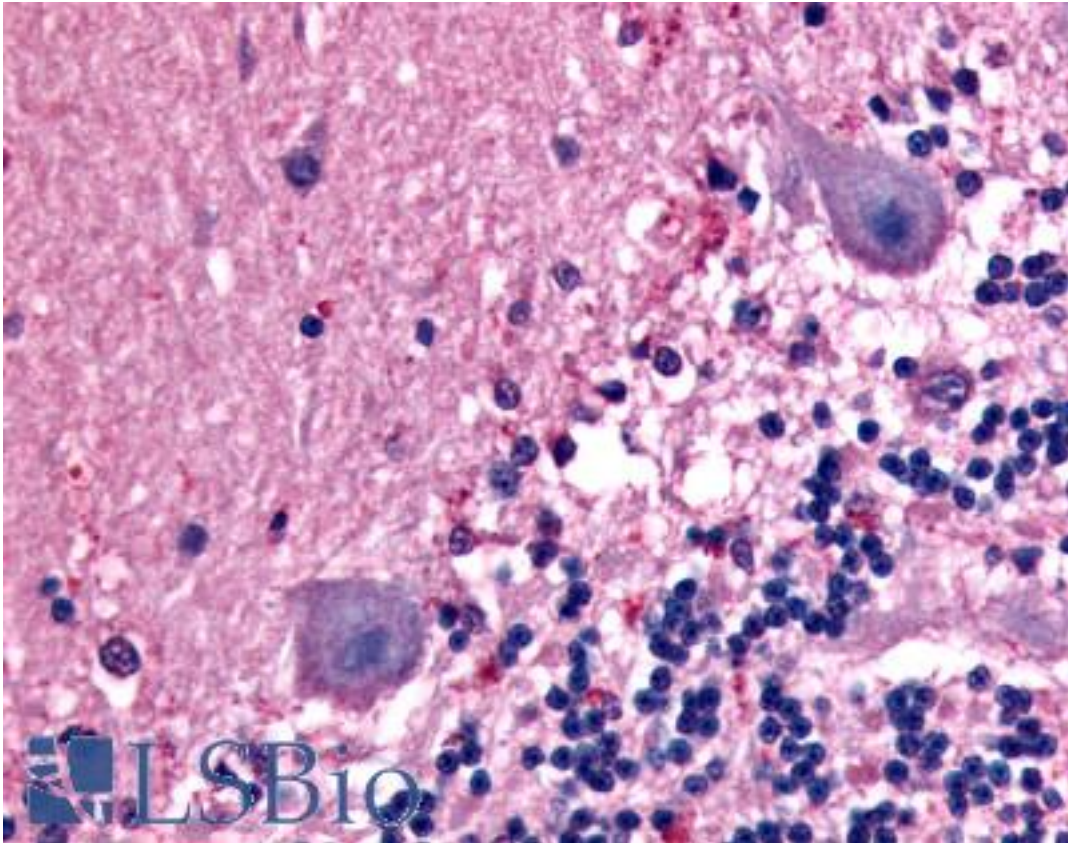


BAI1 Rabbit anti-Human Polyclonal (C-Terminus) Antibody - LS-A989 - LSBio	
CatalogID:	LS-A989
Target:	brain-specific angiogenesis inhibitor 1 (BAI1)
Synonyms:	BAI1 Antibody, GDAIF Antibody
Family / Subfamily:	GPCR / Orphan-B
Host	BAI1 antibody was produced in Rabbit
Clonality:	Polyclonal
Immunogen Species:	BAI1 antibody was raised against Human
Antigen Type:	Synthetic peptide
Immunogen:	BAI1 antibody was raised against synthetic 16 amino acid peptide from C-terminus of human BAI1. Percent identity with other species by BLAST analysis: Human, Gorilla, Gibbon, Monkey, Mouse, Rat, Hamster, Panda, Bovine, Opossum, Chicken, Platypus (100%); Xenopus, Zebrafish (94%); Stickleback, Pufferfish (88%).
Specificity:	Human BAI1. BLAST analysis of the peptide immunogen showed no homology with other human proteins.
Epitope:	C-Terminus
Reactivity:	Human, Gorilla, Gibbon, Monkey, Mouse, Rat, Bovine, Hamster, Chicken
Predicted Reactivity:	Xenopus, Zebrafish
Purification:	Immunoaffinity purified
Presentation:	PBS, 0.1% sodium azide.
Recommended Storage:	Long term: -70°C; Short term: +4°C
Uses:	IHC - Paraffin (14 µg/ml) (Optimal dilution to be determined by the researcher)
Size:	50 µg
Concentration:	1 mg/ml

Immunohistochemistry Image:



Anti-BAI1 antibody LS-A989 IHC of human brain, neurons. Immunohistochemistry of formalin-fixed, paraffin-embedded tissue after heat-induced antigen retrieval.

Requested From:

Japan

Laboratory Reagent For In Vitro Research Use Only

Not for resale without prior written consent from LifeSpan BioSciences, Inc.

Created on 9/23/2014

© 2014 LifeSpan BioSciences