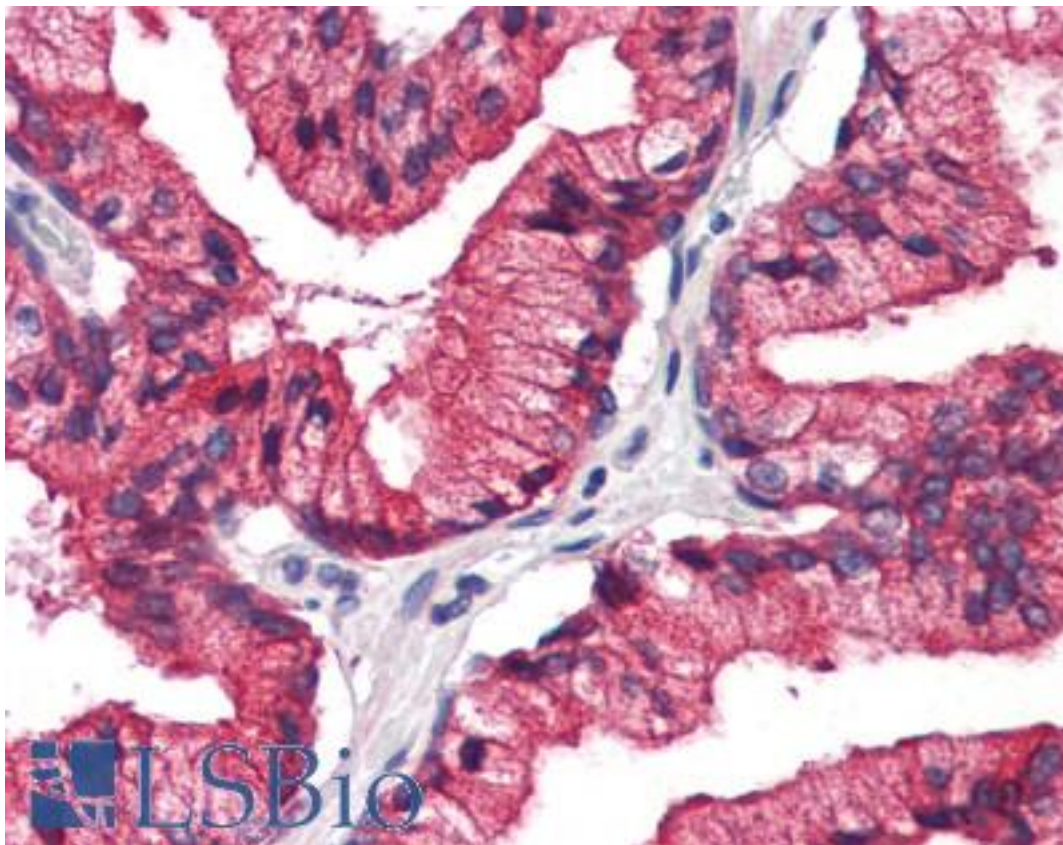


**REEP5 / DP1 Rabbit anti-Human Polyclonal (C-Terminus) Antibody - LS-A9882 - LSBio**

<b>CatalogID:</b>	LS-A9882
<b>Target:</b>	receptor accessory protein 5 (REEP5)
<b>Synonyms:</b>	REEP5 Antibody, C5orf18 Antibody, D5S346 Antibody, Deleted in polyposis 1 Antibody, Deleted in polyposis Antibody, Polyposis locus protein 1 Antibody, Protein TB2 Antibody, Receptor accessory protein 5 Antibody, TB2 Antibody, YOP1 Antibody, DP1 Antibody
<b>Host</b>	REEP5 antibody was produced in Rabbit
<b>Clonality:</b>	Polyclonal
<b>Immunogen Species:</b>	REEP5 / DP1 antibody was raised against Human
<b>Antigen Type:</b>	Synthetic peptide
<b>Immunogen:</b>	REEP5 / DP1 antibody was raised against synthetic 18 amino acid peptide from C-Terminus of human REEP5. Percent identity with other species by BLAST analysis: Human, Orangutan, Gibbon, Monkey, Marmoset, Elephant, Turkey, Chicken (100%); Hamster, Pig, Opossum, Platypus (94%); Mouse, Rat, Horse, Xenopus, Frog (89%); Dog, Bovine (83%).
<b>Specificity:</b>	Human REEP5. BLAST analysis of the peptide immunogen showed no homology with other human proteins.
<b>Epitope:</b>	C-Terminus
<b>Reactivity:</b>	Human, Orangutan, Gibbon, Monkey, Chicken
<b>Predicted Reactivity:</b>	Hamster, Pig
<b>Purification:</b>	Immunoaffinity purified
<b>Presentation:</b>	PBS, 0.1% sodium azide.
<b>Recommended Storage:</b>	Long term: -70°C; Short term: +4°C
<b>Uses:</b>	IHC - Paraffin (5 µg/ml) (Optimal dilution to be determined by the researcher)
<b>Size:</b>	50 µg
<b>Concentration:</b>	1 mg/ml

**Immunohistochemistry Image:**



Human, Prostate: Formalin-Fixed Paraffin-Embedded (FFPE)

**Requested From:**

Japan

Laboratory Reagent For In Vitro Research Use Only

Not for resale without prior written consent from LifeSpan BioSciences, Inc.

Created on 9/23/2014

© 2014 LifeSpan BioSciences