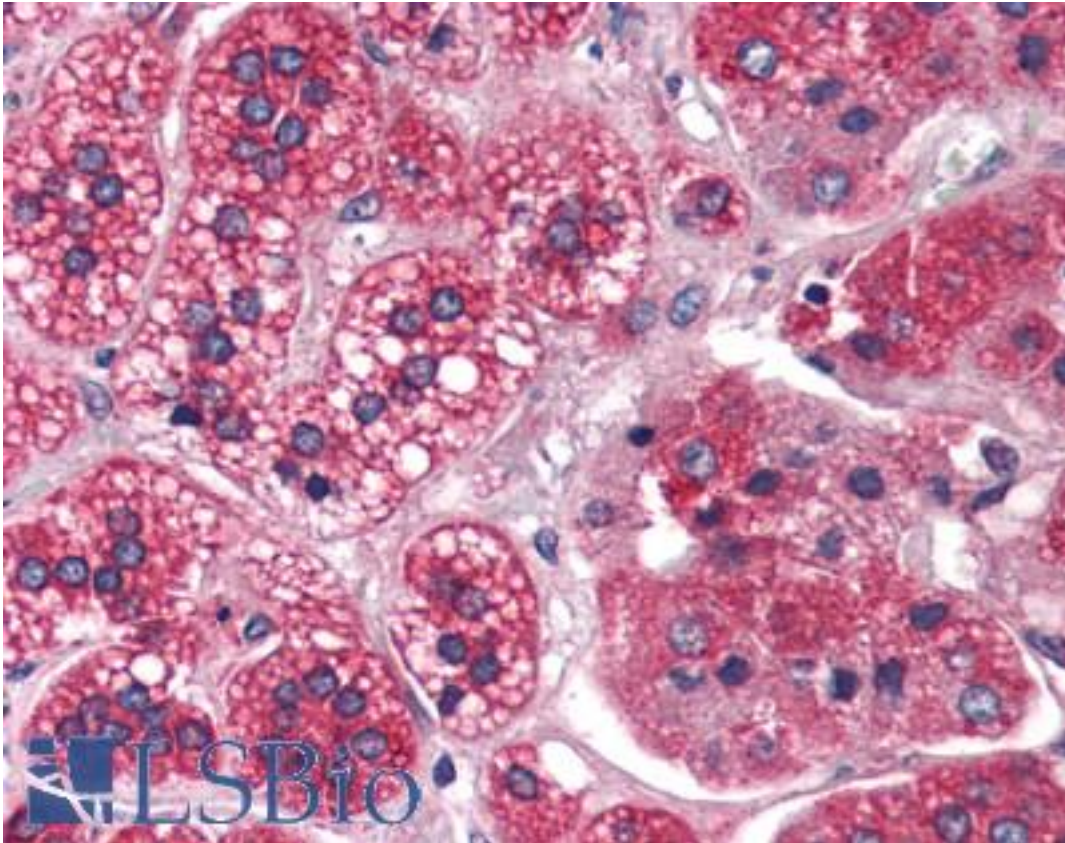


REEP5 / DP1 Rabbit anti-Human Polyclonal (N-Terminus) Antibody - LS-A9881 - LSBio	
CatalogID:	LS-A9881
Target:	receptor accessory protein 5 (REEP5)
Synonyms:	REEP5 Antibody, C5orf18 Antibody, D5S346 Antibody, Deleted in polyposis 1 Antibody, Deleted in polyposis Antibody, Polyposis locus protein 1 Antibody, Protein TB2 Antibody, Receptor accessory protein 5 Antibody, TB2 Antibody, YOP1 Antibody, DP1 Antibody
Host	REEP5 antibody was produced in Rabbit
Clonality:	Polyclonal
Immunogen Species:	REEP5 / DP1 antibody was raised against Human
Antigen Type:	Synthetic peptide
Immunogen:	REEP5 / DP1 antibody was raised against synthetic 14 amino acid peptide from N-Terminus of human REEP5. Percent identity with other species by BLAST analysis: Human, Orangutan, Gibbon, Monkey, Marmoset, Mouse, Rat (100%); Chicken (93%); Elephant, Platypus (86%).
Specificity:	Human REEP5. BLAST analysis of the peptide immunogen showed no homology with other human proteins.
Epitope:	N-Terminus
Reactivity:	Human, Orangutan, Gibbon, Monkey, Mouse, Rat
Predicted Reactivity:	Chicken
Purification:	Immunoaffinity purified
Presentation:	PBS, 0.1% sodium azide.
Recommended Storage:	Long term: -70°C; Short term: +4°C
Uses:	IHC - Paraffin (2.5 µg/ml) (Optimal dilution to be determined by the researcher)
Size:	50 µg
Concentration:	1 mg/ml

Immunohistochemistry Image:



Anti-REEP5 antibody LS-A9881 IHC of human adrenal. Immunohistochemistry of formalin-fixed, paraffin-embedded tissue after heat-induced antigen retrieval.

Requested From:

Japan

Laboratory Reagent For In Vitro Research Use Only

Not for resale without prior written consent from LifeSpan BioSciences, Inc.

Created on 9/23/2014

© 2014 LifeSpan BioSciences