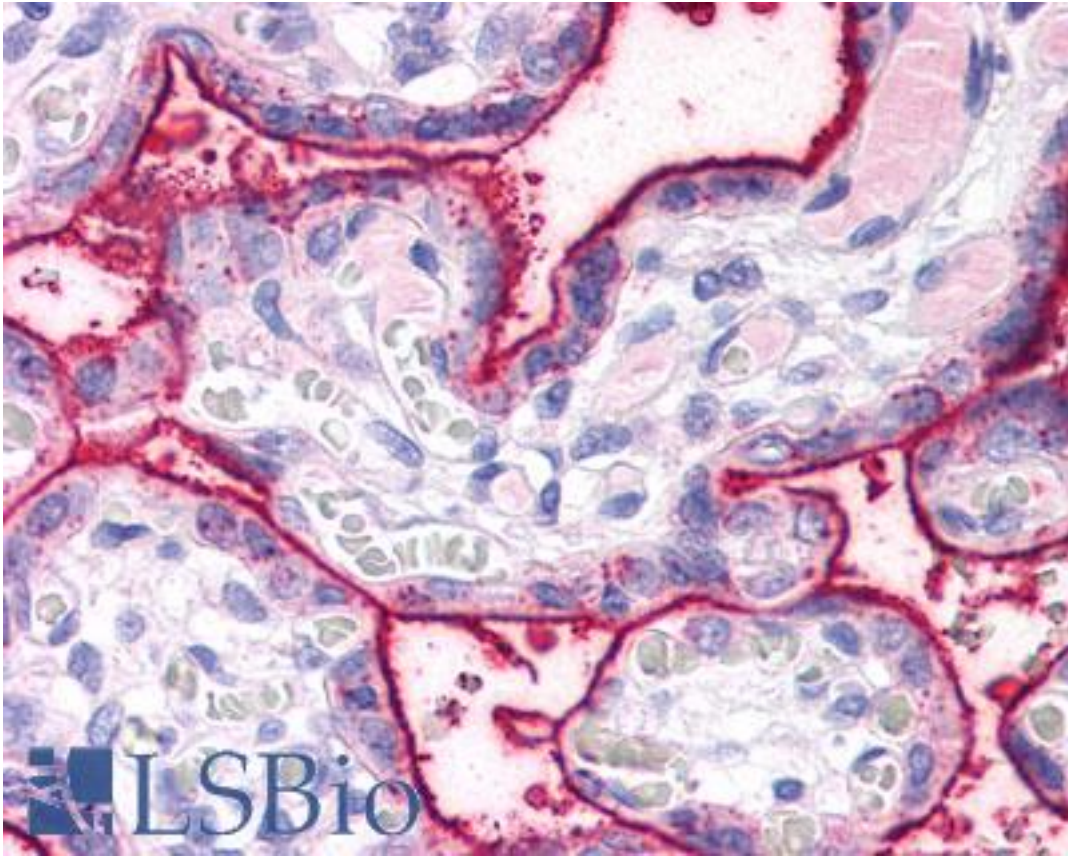


**SURF4 Rabbit anti-Human Polyclonal (N-Terminus) Antibody - LS-A9866 - LSBio**

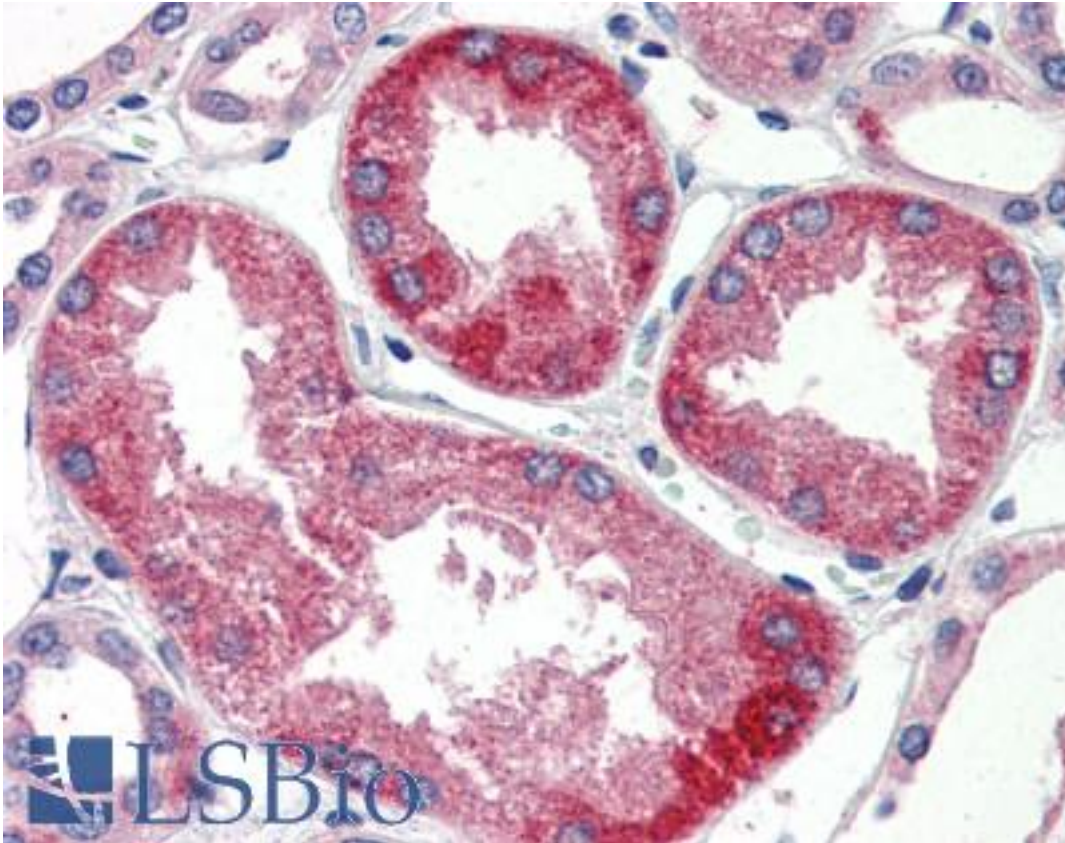
<b>CatalogID:</b>	LS-A9866
<b>Target:</b>	surfeit 4 (SURF4)
<b>Synonyms:</b>	SURF4 Antibody, ERV29 Antibody, Surfeit 4 Antibody, Surfeit locus protein 4 Antibody, SURF-4 Antibody
<b>Host</b>	SURF4 antibody was produced in Rabbit
<b>Clonality:</b>	Polyclonal
<b>Immunogen Species:</b>	SURF4 antibody was raised against Human
<b>Antigen Type:</b>	Synthetic peptide
<b>Immunogen:</b>	SURF4 antibody was raised against synthetic 18 amino acid peptide from N-Terminus of human SURF4. Percent identity with other species by BLAST analysis: Human, Gorilla, Orangutan, Gibbon, Monkey, Mouse, Rat, Bovine, Turkey, Chicken, Xenopus, Salmon (100%); Marmoset, Hamster, Elephant, Panda, Dog, Bat, Opossum, Platypus, Pufferfish, Zebrafish (94%); Stickleback (89%).
<b>Specificity:</b>	Human SURF4. BLAST analysis of the peptide immunogen showed no homology with other human proteins.
<b>Epitope:</b>	N-Terminus
<b>Reactivity:</b>	Human, Gorilla, Orangutan, Gibbon, Mouse, Rat, Bovine, Chicken, Xenopus
<b>Predicted Reactivity:</b>	Monkey, Bat, Dog, Hamster, Zebrafish
<b>Purification:</b>	Immunoaffinity purified
<b>Presentation:</b>	PBS, 0.1% sodium azide.
<b>Recommended Storage:</b>	Long term: -70°C; Short term: +4°C
<b>Uses:</b>	IHC - Paraffin (15 µg/ml) (Optimal dilution to be determined by the researcher)
<b>Size:</b>	50 µg
<b>Concentration:</b>	1 mg/ml

**Immunohistochemistry Image:**



Anti-SURF4 antibody LS-A9866 IHC of human placenta. Immunohistochemistry of formalin-fixed, paraffin-embedded tissue after heat-induced antigen retrieval.

**Immunohistochemistry Image:**



Anti-SURF4 antibody LS-A9866 IHC of human kidney. Immunohistochemistry of formalin-fixed, paraffin-embedded tissue after heat-induced antigen retrieval.

**Requested From:**

Japan

Laboratory Reagent For In Vitro Research Use Only

Not for resale without prior written consent from LifeSpan BioSciences, Inc.

Created on 9/23/2014

© 2014 LifeSpan BioSciences