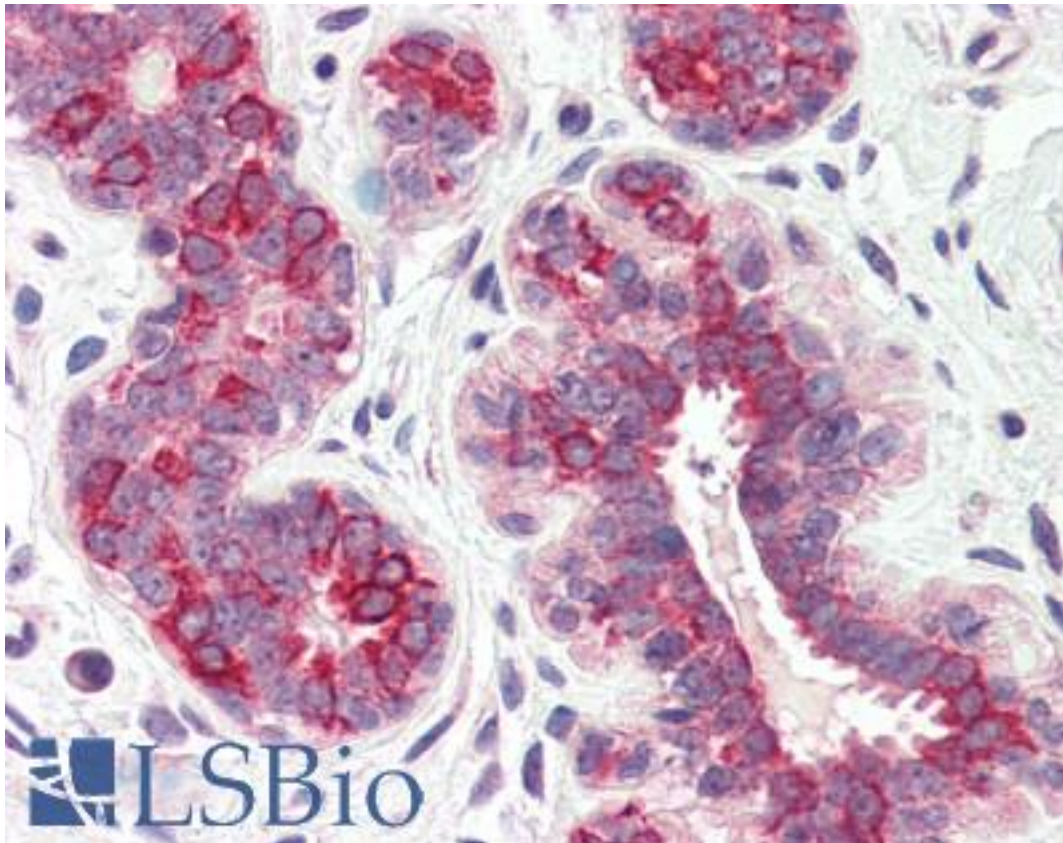


DHRS7 Rabbit anti-Human Polyclonal (Internal) Antibody - LS-A9865 - LSBio

CatalogID:	LS-A9865
Target:	Dehydrogenase/reductase (SDR family) member 7 (DHRS7)
Synonyms:	DHRS7 Antibody, CGI-86 Antibody, DHRS7A Antibody, RetDSR4 Antibody, RetSDR4 Antibody, SDR34C1 Antibody
Host	DHRS7 antibody was produced in Rabbit
Clonality:	Polyclonal
Immunogen Species:	DHRS7 antibody was raised against Human
Antigen Type:	Synthetic peptide
Immunogen:	DHRS7 antibody was raised against synthetic 15 amino acid peptide from internal region of human DHRS7. Percent identity with other species by BLAST analysis: Human, Gorilla, Gibbon, Monkey, Mouse, Elephant, Panda, Dog, Bat, Bovine, Horse, Rabbit (100%); Rat, Hamster, Opossum (93%); Marmoset, Pig, Xenopus (87%); Sea anemone (80%).
Specificity:	Human DHRS7. BLAST analysis of the peptide immunogen showed no homology with other human proteins.
Epitope:	Internal
Reactivity:	Human, Gorilla, Gibbon, Monkey, Mouse, Bat, Bovine, Dog, Horse, Rabbit
Predicted Reactivity:	Rat, Hamster
Purification:	Immunoaffinity purified
Presentation:	PBS, 0.1% sodium azide.
Recommended Storage:	Long term: -70°C; Short term: +4°C
Uses:	IHC - Paraffin (10 µg/ml) (Optimal dilution to be determined by the researcher)
Size:	50 µg
Concentration:	1 mg/ml

Immunohistochemistry Image:



Anti-DHRS7 antibody LS-A9865 IHC of human breast. Immunohistochemistry of formalin-fixed, paraffin-embedded tissue after heat-induced antigen retrieval.

Requested From:

Japan

Laboratory Reagent For In Vitro Research Use Only

Not for resale without prior written consent from LifeSpan BioSciences, Inc.

Created on 9/23/2014

© 2014 LifeSpan BioSciences