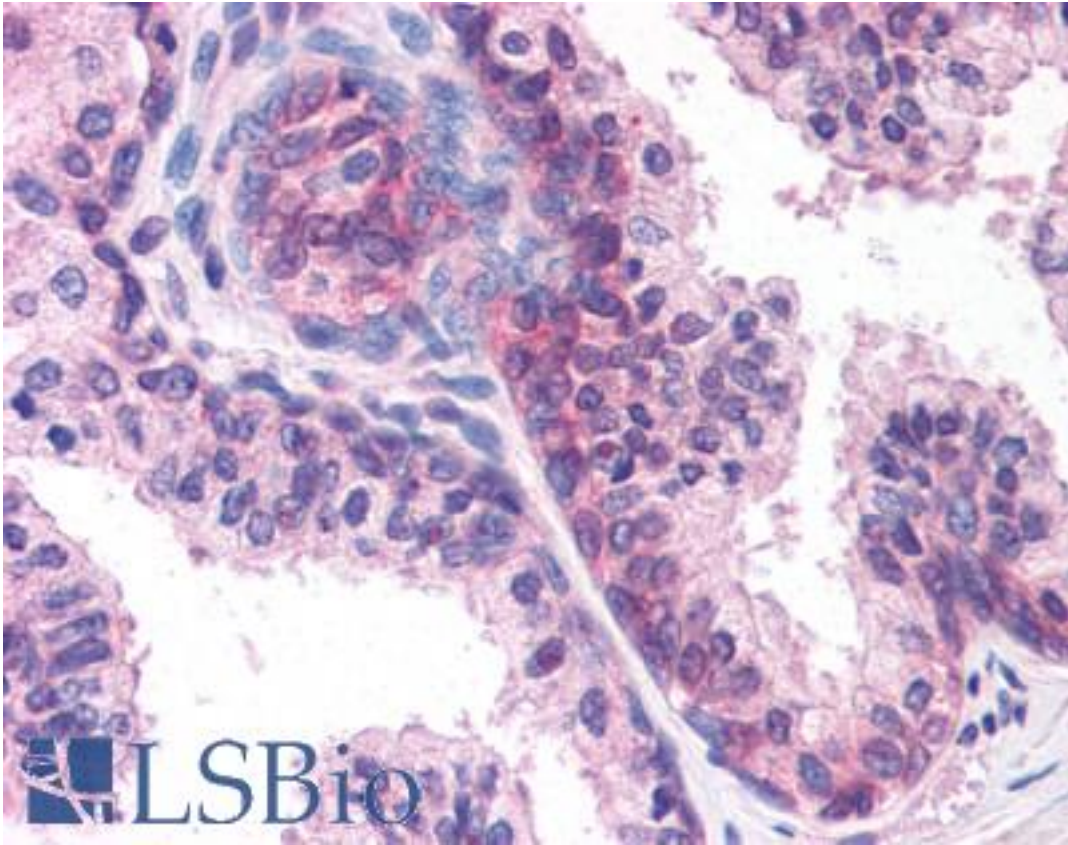


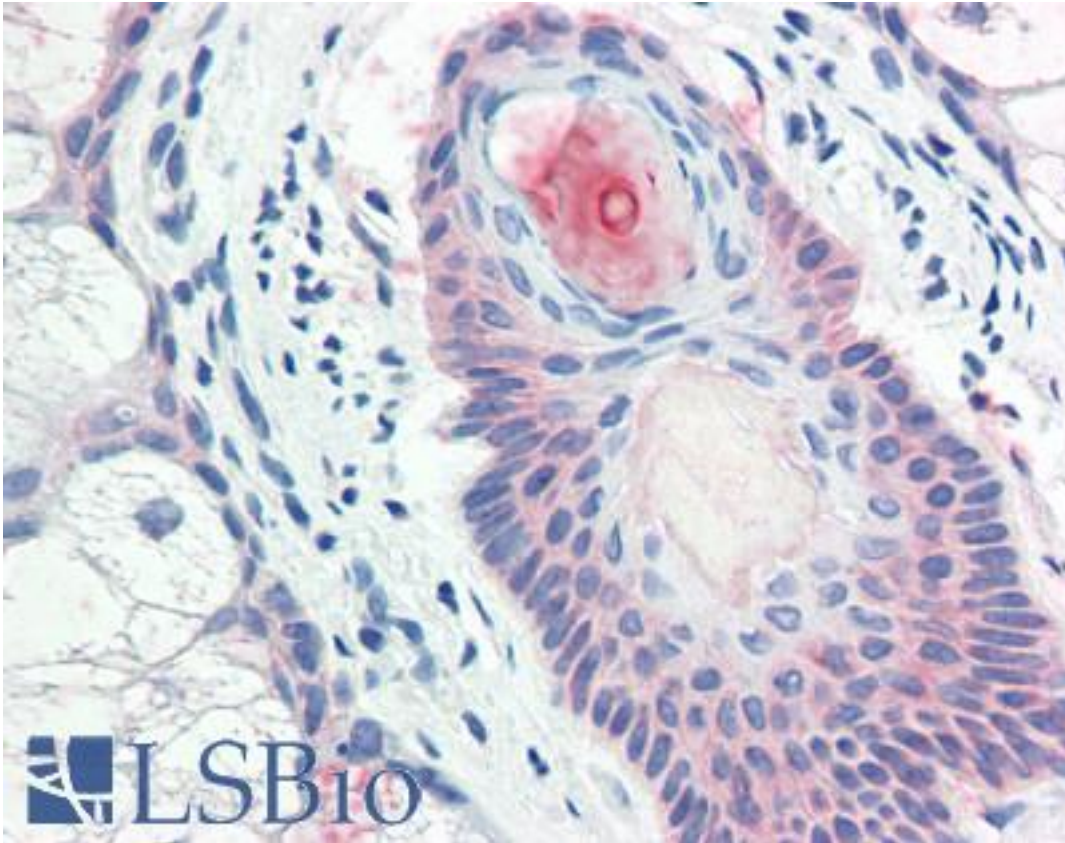
DHR7 Rabbit anti-Human Polyclonal (Internal) Antibody - LS-A9864 - LSBio	
CatalogID:	LS-A9864
Target:	Dehydrogenase/reductase (SDR family) member 7 (DHR7)
Synonyms:	DHR7 Antibody, CGI-86 Antibody, DHR7A Antibody, RetDSR4 Antibody, RetSDR4 Antibody, SDR34C1 Antibody
Host	DHR7 antibody was produced in Rabbit
Clonality:	Polyclonal
Immunogen Species:	DHR7 antibody was raised against Human
Antigen Type:	Synthetic peptide
Immunogen:	DHR7 antibody was raised against synthetic 18 amino acid peptide from internal region of human DHR7. Percent identity with other species by BLAST analysis: Human, Gorilla, Gibbon, Monkey, Bat, Horse (100%); Marmoset, Elephant, Pig (94%); Panda, Dog, Bovine, Rabbit, Turkey, Chicken, Xenopus (89%); Mouse, Rat, Stickleback, Zebrafish (83%).
Specificity:	Human DHR7. BLAST analysis of the peptide immunogen showed no homology with other human proteins.
Epitope:	Internal
Reactivity:	Human, Gorilla, Gibbon, Bat, Horse
Predicted Reactivity:	Monkey, Pig
Purification:	Immunoaffinity purified
Presentation:	PBS, 0.1% sodium azide.
Recommended Storage:	Long term: -70°C; Short term: +4°C
Uses:	IHC - Paraffin (15 µg/ml) (Optimal dilution to be determined by the researcher)
Size:	50 µg
Concentration:	1 mg/ml

Immunohistochemistry Image:



Anti-DHRS7 antibody LS-A9864 IHC of human prostate. Immunohistochemistry of formalin-fixed, paraffin-embedded tissue after heat-induced antigen retrieval.

Immunohistochemistry Image:



Anti-DHR7 antibody LS-A9864 IHC of human skin, pilosebaceous unit.
Immunohistochemistry of formalin-fixed, paraffin-embedded tissue after heat-induced antigen retrieval.

Requested From:

Japan

Laboratory Reagent For In Vitro Research Use Only

Not for resale without prior written consent from LifeSpan BioSciences, Inc.

Created on 9/23/2014

© 2014 LifeSpan BioSciences