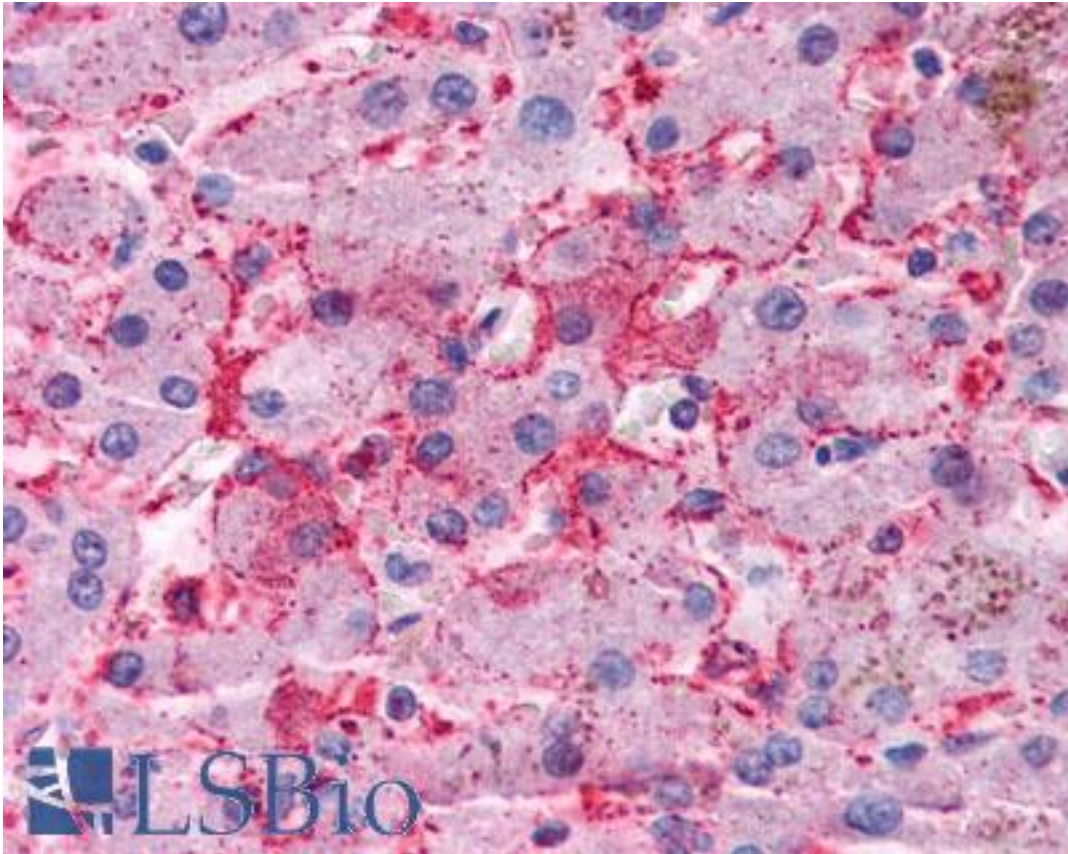


OSTC Rabbit anti-Human Polyclonal (Internal) Antibody - LS-A9860 - LSBio

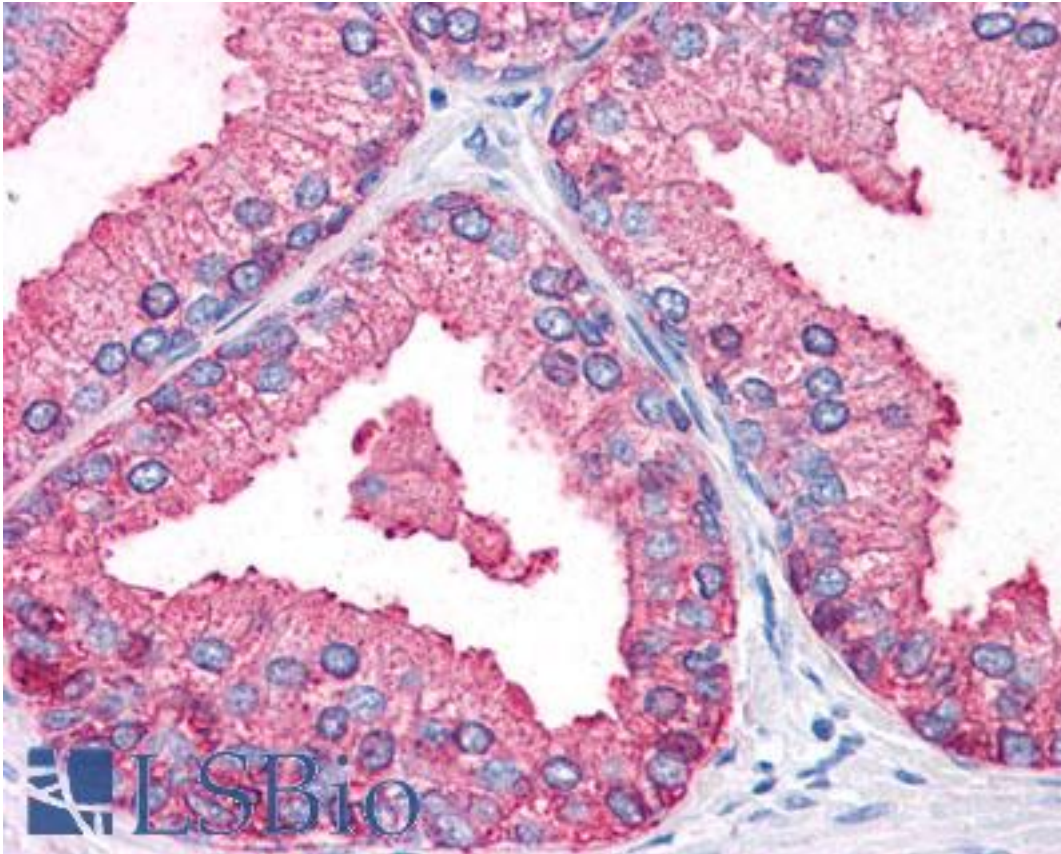
| | |
|------------------------------|--|
| CatalogID: | LS-A9860 |
| Target: | oligosaccharyltransferase complex subunit (non-catalytic) (OSTC) |
| Synonyms: | OSTC Antibody, DC2 Antibody, Hydrophobic protein HSF-28 Antibody |
| Host | OSTC antibody was produced in Rabbit |
| Clonality: | Polyclonal |
| Immunogen Species: | OSTC antibody was raised against Human |
| Antigen Type: | Synthetic peptide |
| Immunogen: | OSTC antibody was raised against synthetic 14 amino acid peptide from internal region of human OSTC. Percent identity with other species by BLAST analysis: Human, Gorilla, Gibbon, Marmoset, Mouse, Rat, Dog, Hamster, Panda, Pig, Opossum, Chicken, Platypus, Xenopus, Pike, Catfish, Salmon, Sablefish, Pufferfish, Zebrafish, Stickleback (100%); Monkey, Bovine (93%); Elephant, Horse, Mosquito, Ant (86%). |
| Specificity: | Human OSTC. BLAST analysis of the peptide immunogen showed no homology with other human proteins. |
| Epitope: | Internal |
| Reactivity: | Human, Gorilla, Gibbon, Mouse, Rat, Dog, Hamster, Pig, Chicken, Xenopus, Zebrafish |
| Predicted Reactivity: | Monkey, Bovine |
| Purification: | Immunoaffinity purified |
| Presentation: | PBS, 0.1% sodium azide. |
| Recommended Storage: | Long term: -70°C; Short term: +4°C |
| Usage Summary: | Immunohistochemistry: LS-A9860 was validated for use in immunohistochemistry on a panel of 21 formalin-fixed, paraffin-embedded (FFPE) human tissues after heat induced antigen retrieval in pH 6.0 citrate buffer. After incubation with the primary antibody, slides were incubated with biotinylated secondary antibody, followed by alkaline phosphatase-streptavidin and chromogen. The stained slides were evaluated by a pathologist to confirm staining specificity. The optimal working concentration for LS-A9860 was determined to be 10 ug/ml. |
| Uses: | IHC - Paraffin (10 µg/ml) (Optimal dilution to be determined by the researcher) |
| Size: | 50 µg |
| Concentration: | 1 mg/ml |

Immunohistochemistry Image:



Anti-OSTC antibody LS-A9860 IHC of human liver. Immunohistochemistry of formalin-fixed, paraffin-embedded tissue after heat-induced antigen retrieval.

Immunohistochemistry Image:



Anti-OSTC antibody LS-A9860 IHC of human prostate. Immunohistochemistry of formalin-fixed, paraffin-embedded tissue after heat-induced antigen retrieval.

Requested From:

Japan

Laboratory Reagent For In Vitro Research Use Only

Not for resale without prior written consent from LifeSpan BioSciences, Inc.

Created on 9/23/2014

© 2014 LifeSpan BioSciences