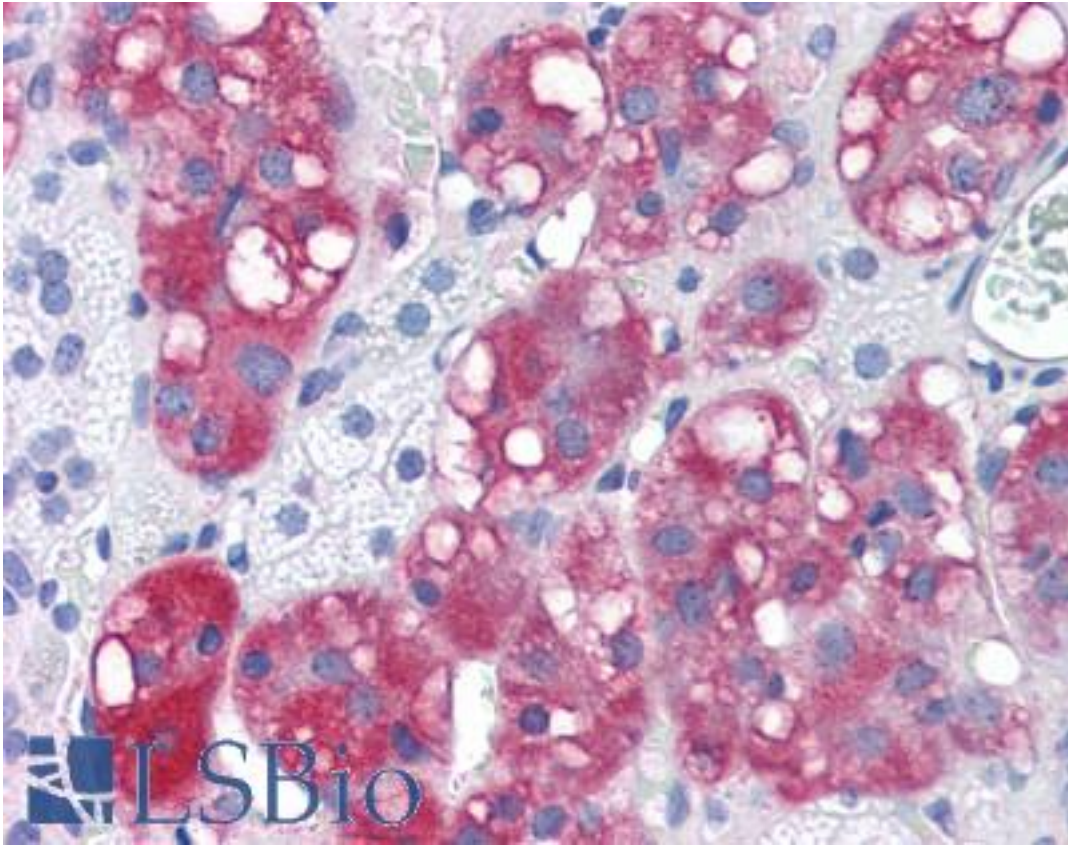


C4.4A / LYPD3 Rabbit anti-Human Polyclonal (C-Terminus) Antibody - LS-A9856 - LSBio

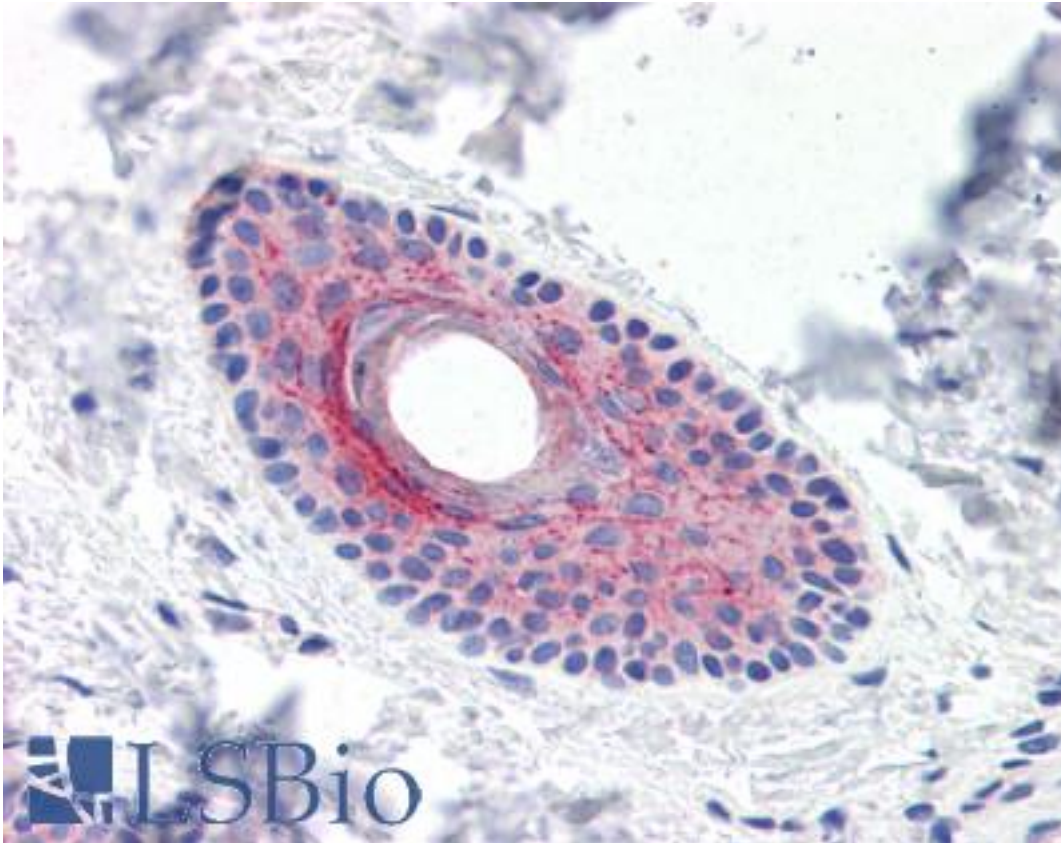
CatalogID:	LS-A9856
Target:	LY6/PLAUR domain containing 3 (LYPD3)
Synonyms:	LYPD3 Antibody, C4.4A Antibody, MIG-C4 Antibody, LY6/PLAUR domain containing 3 Antibody
Host	LYPD3 antibody was produced in Rabbit
Clonality:	Polyclonal
Immunogen Species:	C4.4A / LYPD3 antibody was raised against Human
Antigen Type:	Synthetic peptide
Immunogen:	C4.4A / LYPD3 antibody was raised against synthetic 13 amino acid peptide from C-terminus of human LYPD3. Percent identity with other species by BLAST analysis: Human, Gorilla, Gibbon (100%); Panda (92%); Mouse, Rat, Horse (85%).
Specificity:	Human LYPD3. BLAST analysis of the peptide immunogen showed no homology with other human proteins.
Epitope:	C-Terminus
Reactivity:	Human, Gorilla, Gibbon
Purification:	Immunoaffinity purified
Presentation:	PBS, 0.1% sodium azide.
Recommended Storage:	Long term: -70°C; Short term: +4°C
Usage Summary:	Immunohistochemistry: LS-A9856 was validated for use in immunohistochemistry on a panel of 21 formalin-fixed, paraffin-embedded (FFPE) human tissues after heat induced antigen retrieval in pH 6.0 citrate buffer. After incubation with the primary antibody, slides were incubated with biotinylated secondary antibody, followed by alkaline phosphatase-streptavidin and chromogen. The stained slides were evaluated by a pathologist to confirm staining specificity. The optimal working concentration for LS-A9856 was determined to be 15 ug/ml.
Uses:	IHC - Paraffin (15 µg/ml) (Optimal dilution to be determined by the researcher)
Size:	50 µg
Concentration:	1 mg/ml

Immunohistochemistry Image:



Anti-LYPD3 antibody LS-A9856 IHC of human adrenal. Immunohistochemistry of formalin-fixed, paraffin-embedded tissue after heat-induced antigen retrieval.

Immunohistochemistry Image:



Anti-LYPD3 antibody LS-A9856 IHC of human skin, hair follicle. Immunohistochemistry of formalin-fixed, paraffin-embedded tissue after heat-induced antigen retrieval.

Requested From:

Japan

Laboratory Reagent For In Vitro Research Use Only

Not for resale without prior written consent from LifeSpan BioSciences, Inc.

Created on 9/23/2014

© 2014 LifeSpan BioSciences