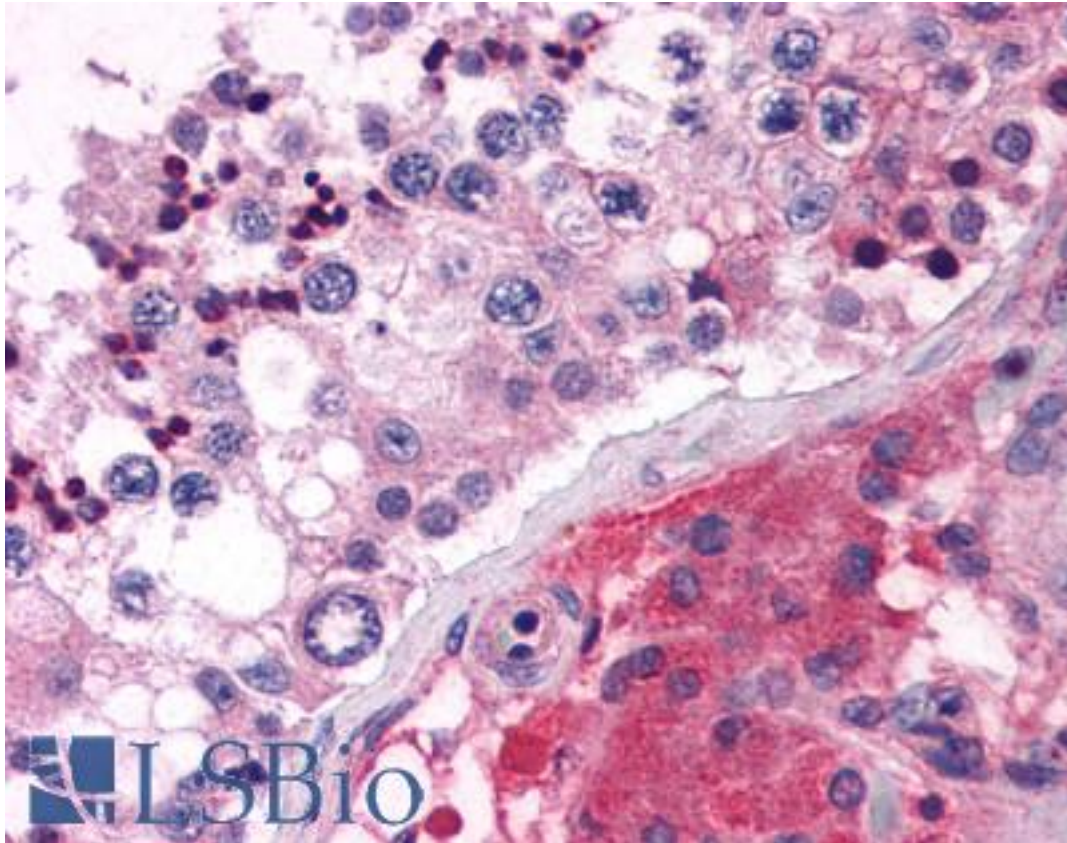


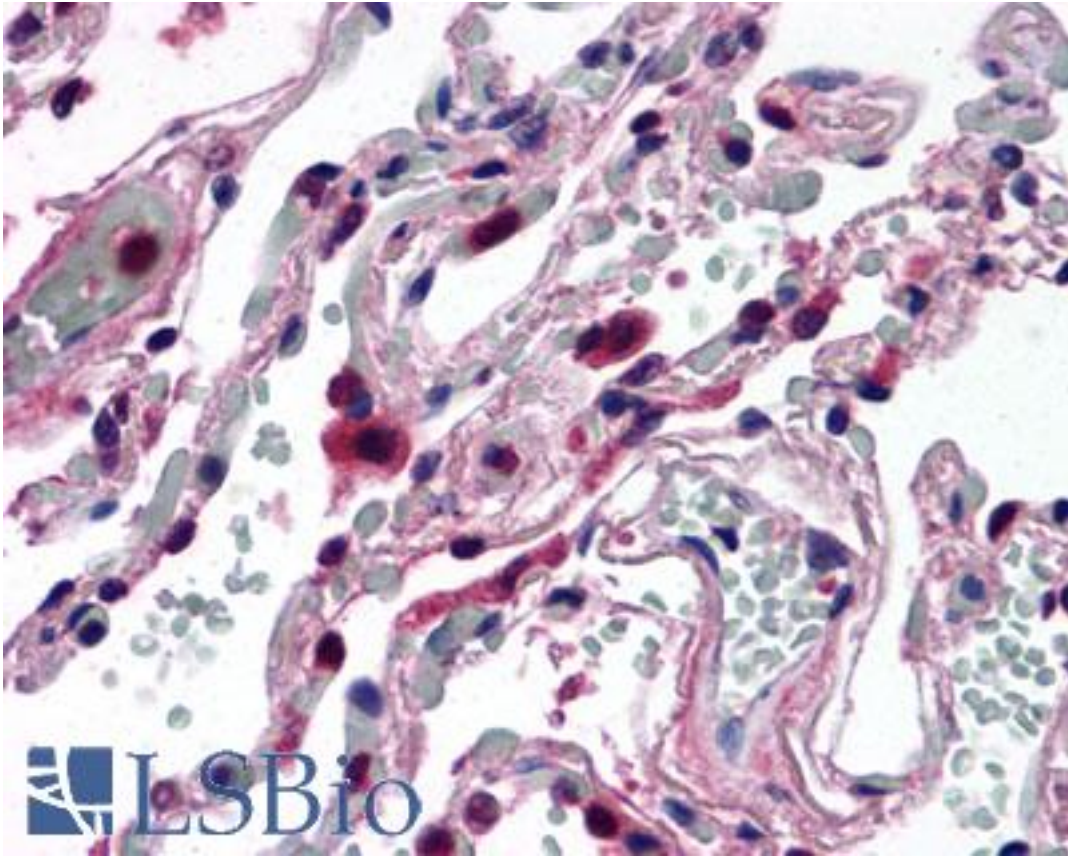
HELO1 / ELOVL5 Rabbit anti-Human Polyclonal (C-Terminus) Antibody - LS-A9855 - LSBio	
CatalogID:	LS-A9855
Target:	ELOVL fatty acid elongase 5 (ELOVL5)
Synonyms:	ELOVL5 Antibody, ELOVL FA elongase 5 Antibody, ELOVL fatty acid elongase 5 Antibody, Fatty acid elongase 1 Antibody, RP3-483K16.1 Antibody, DJ483K16.1 Antibody, HELO1 Antibody
Host	ELOVL5 antibody was produced in Rabbit
Clonality:	Polyclonal
Immunogen Species:	HELO1 / ELOVL5 antibody was raised against Human
Antigen Type:	Synthetic peptide
Immunogen:	HELO1 / ELOVL5 antibody was raised against synthetic 15 amino acid peptide from C-Terminus of human ELOVL5. Percent identity with other species by BLAST analysis: Human, Gorilla, Orangutan, Gibbon, Monkey (100%); Marmoset, Panda (93%); Goat, Dog, Bat, Bovine, Rabbit, Opossum (87%); Elephant, Horse, Turkey, Chicken, Lizard (80%).
Specificity:	Human ELOVL5. BLAST analysis of the peptide immunogen showed no homology with other human proteins.
Epitope:	C-Terminus
Reactivity:	Human, Gorilla, Orangutan, Gibbon
Predicted Reactivity:	Monkey
Purification:	Immunoaffinity purified
Presentation:	PBS, 0.1% sodium azide.
Recommended Storage:	Long term: -70°C; Short term: +4°C
Uses:	IHC - Paraffin (15 µg/ml) (Optimal dilution to be determined by the researcher)
Size:	50 µg
Concentration:	1 mg/ml

Immunohistochemistry Image:



Anti-ELOVL5 antibody LS-A9855 IHC of human testis. Immunohistochemistry of formalin-fixed, paraffin-embedded tissue after heat-induced antigen retrieval.

Immunohistochemistry Image:



Anti-ELOVL5 antibody LS-A9855 IHC of human lung. Immunohistochemistry of formalin-fixed, paraffin-embedded tissue after heat-induced antigen retrieval.

Requested From:

Japan

Laboratory Reagent For In Vitro Research Use Only

Not for resale without prior written consent from LifeSpan BioSciences, Inc.

Created on 9/23/2014

© 2014 LifeSpan BioSciences