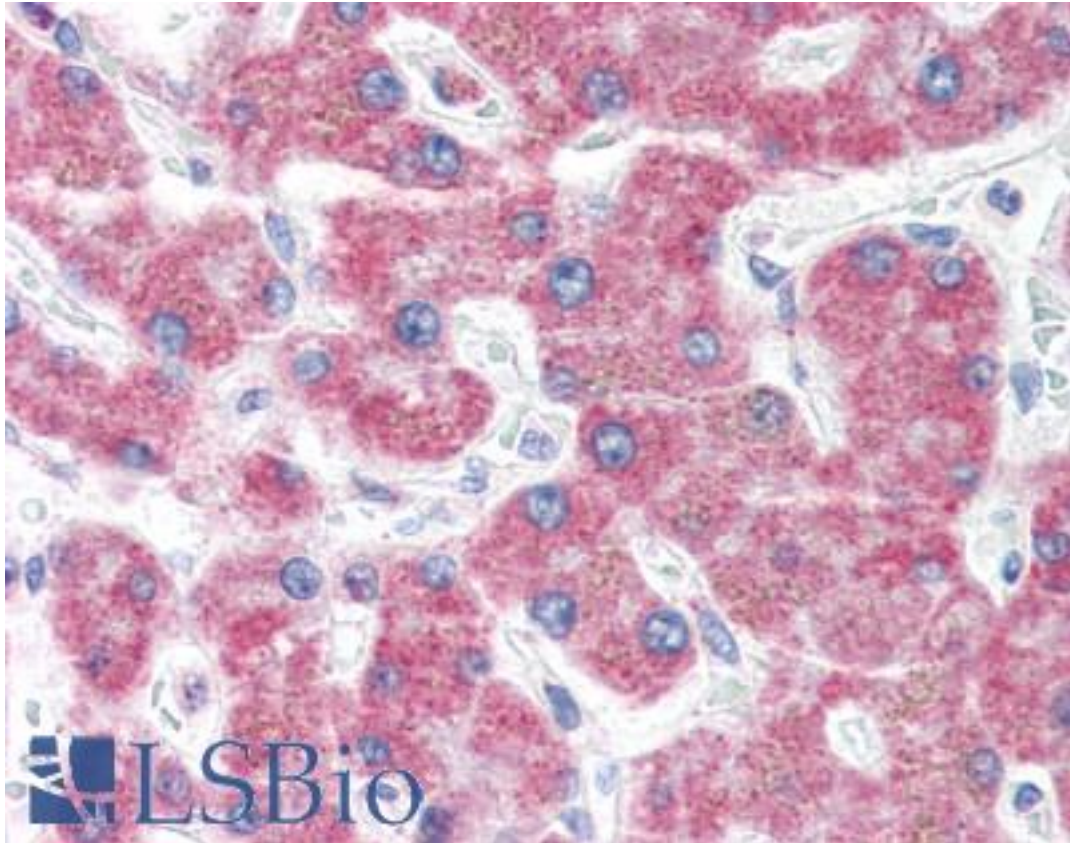


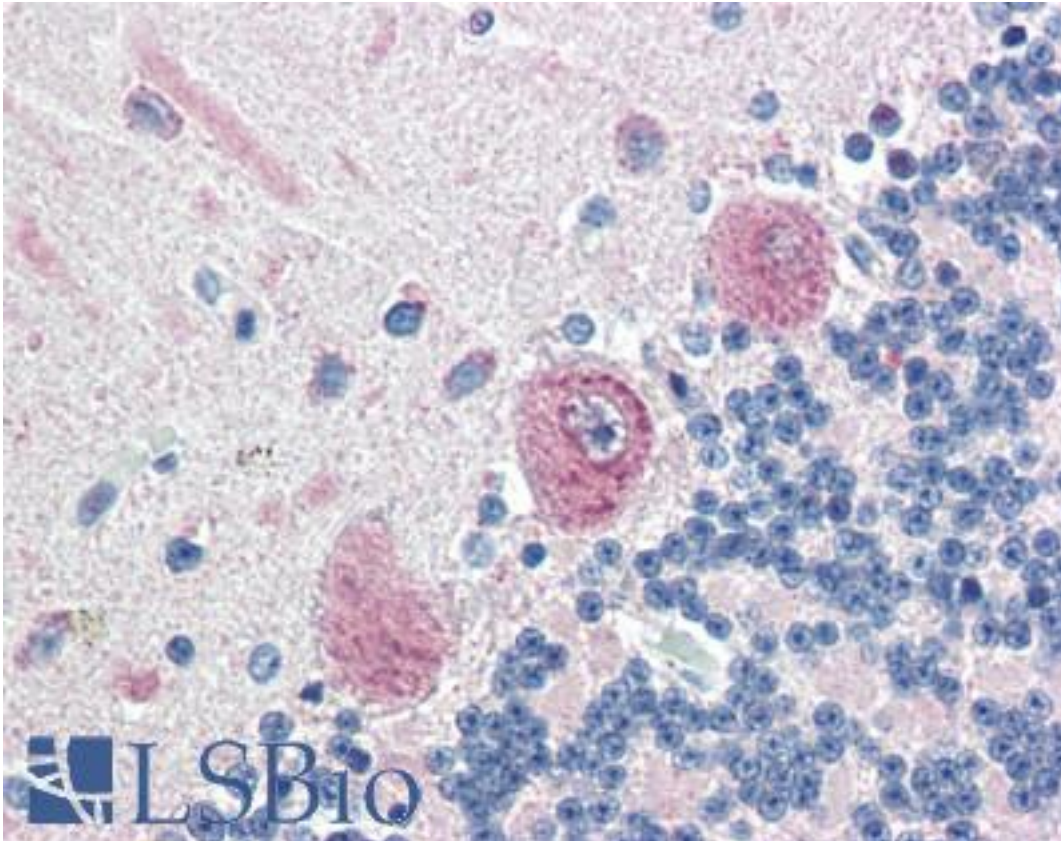
KIAA0152 / MLEC Rabbit anti-Human Polyclonal (N-Terminus) Antibody - LS-A9847 - LSBio	
CatalogID:	LS-A9847
Target:	malectin (MLEC)
Synonyms:	MLEC Antibody, KIAA0152 Antibody, Malectin Antibody
Host	MLEC antibody was produced in Rabbit
Clonality:	Polyclonal
Immunogen Species:	KIAA0152 / MLEC antibody was raised against Human
Antigen Type:	Synthetic peptide
Immunogen:	KIAA0152 / MLEC antibody was raised against synthetic 15 amino acid peptide from N-terminus of human MLEC. Percent identity with other species by BLAST analysis: Human, Gorilla, Gibbon, Monkey, Marmoset, Mouse, Rat, Bovine, Dog, Bat, Elephant, Panda, Horse, Rabbit, Pig, Pufferfish (100%); Chicken, Xenopus (87%); Stickleback, Tick (80%).
Specificity:	Human MLEC. BLAST analysis of the peptide immunogen showed no homology with other human proteins.
Epitope:	N-Terminus
Reactivity:	Human, Gorilla, Gibbon, Monkey, Mouse, Rat, Bat, Bovine, Dog, Horse, Pig, Rabbit
Purification:	Immunoaffinity purified
Presentation:	PBS, 0.1% sodium azide.
Recommended Storage:	Long term: -70°C; Short term: +4°C
Usage Summary:	Immunohistochemistry: LS-A9847 was validated for use in immunohistochemistry on a panel of 21 formalin-fixed, paraffin-embedded (FFPE) human tissues after heat induced antigen retrieval in pH 6.0 citrate buffer. After incubation with the primary antibody, slides were incubated with biotinylated secondary antibody, followed by alkaline phosphatase-streptavidin and chromogen. The stained slides were evaluated by a pathologist to confirm staining specificity. The optimal working concentration for LS-A9847 was determined to be 5 ug/ml.
Uses:	IHC - Paraffin (5 µg/ml) (Optimal dilution to be determined by the researcher)
Size:	50 µg
Concentration:	0.9 mg/ml

Immunohistochemistry Image:



Anti-MLEC antibody LS-A9847 IHC of human liver. Immunohistochemistry of formalin-fixed, paraffin-embedded tissue after heat-induced antigen retrieval.

Immunohistochemistry Image:



Anti-MLEC antibody LS-A9847 IHC of human brain, cerebellum. Immunohistochemistry of formalin-fixed, paraffin-embedded tissue after heat-induced antigen retrieval.

Requested From:

Japan

Laboratory Reagent For In Vitro Research Use Only

Not for resale without prior written consent from LifeSpan BioSciences, Inc.

Created on 9/23/2014

© 2014 LifeSpan BioSciences