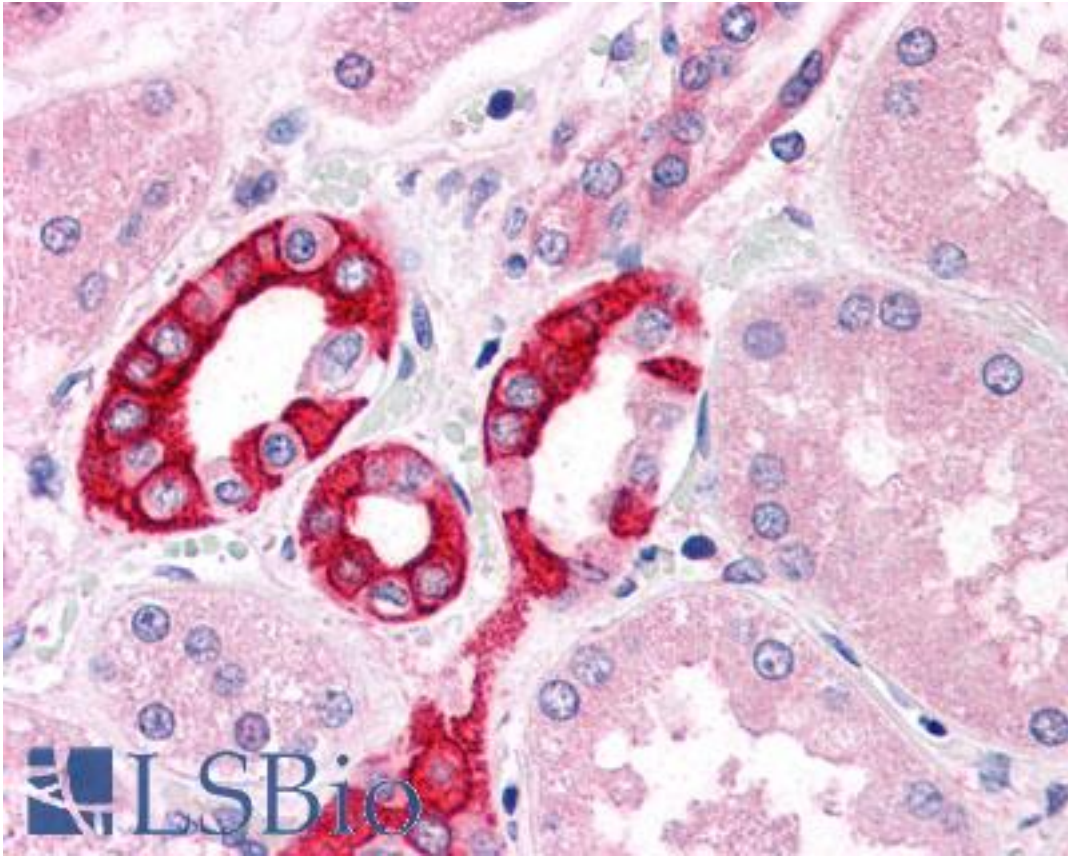


GM2A Rabbit anti-Human Polyclonal (Internal) Antibody - LS-A9846 - LSBio

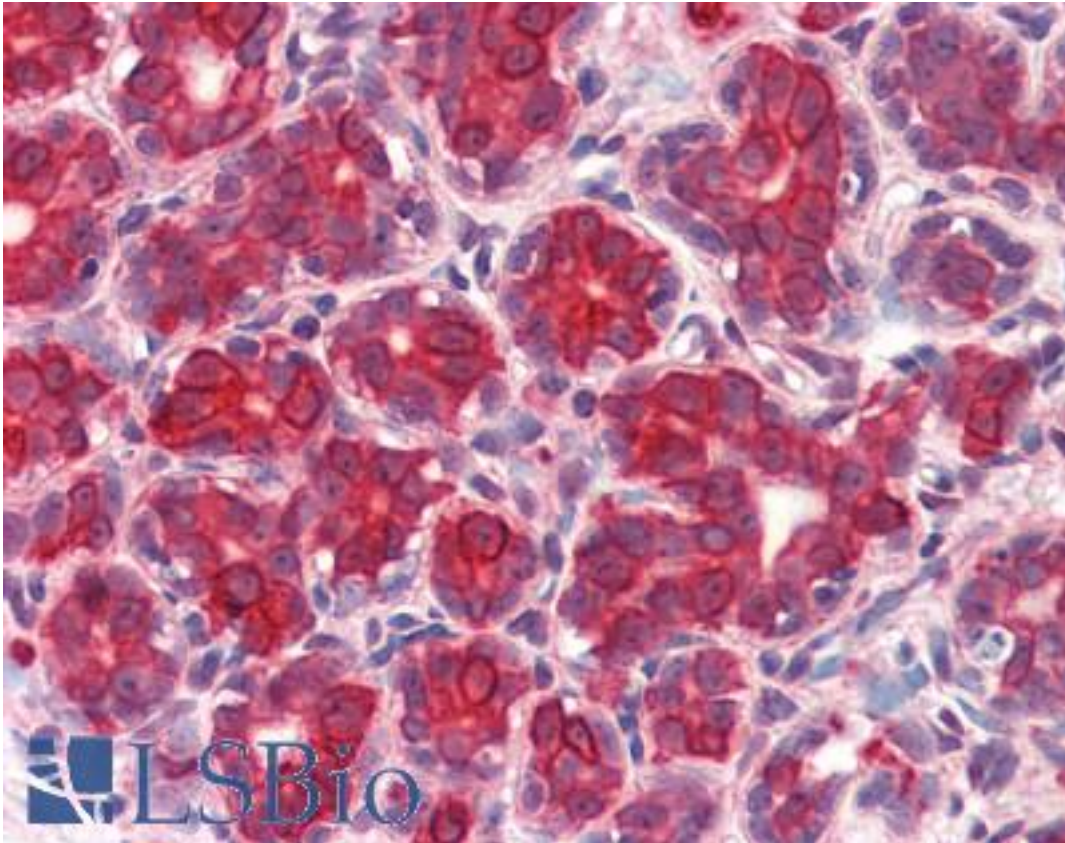
CatalogID:	LS-A9846
Target:	GM2 ganglioside activator (GM2A)
Synonyms:	GM2A Antibody, Ganglioside GM2 activator Antibody, GM2 ganglioside activator Antibody, GM2-AP Antibody, SAP-3 Antibody
Host	GM2A antibody was produced in Rabbit
Clonality:	Polyclonal
Immunogen Species:	GM2A antibody was raised against Human
Antigen Type:	Synthetic peptide
Immunogen:	GM2A antibody was raised against synthetic 15 amino acid peptide from internal region of human GM2A. Percent identity with other species by BLAST analysis: Human, Chimpanzee, Gorilla, Orangutan, Gibbon (100%); Monkey, Marmoset (93%).
Specificity:	Human GM2A. BLAST analysis of the peptide immunogen showed no homology with other human proteins.
Epitope:	Internal
Reactivity:	Human, Chimpanzee, Gorilla, Orangutan, Gibbon
Predicted Reactivity:	Monkey
Purification:	Immunoaffinity purified
Presentation:	PBS, 0.1% sodium azide.
Recommended Storage:	Long term: -70°C; Short term: +4°C
Uses:	IHC - Paraffin (5 µg/ml) (Optimal dilution to be determined by the researcher)
Size:	50 µg
Concentration:	1 mg/ml

Immunohistochemistry Image:



Anti-GM2A antibody LS-A9846 IHC of human kidney. Immunohistochemistry of formalin-fixed, paraffin-embedded tissue after heat-induced antigen retrieval.

Immunohistochemistry Image:



Anti-GM2A antibody LS-A9846 IHC of human breast. Immunohistochemistry of formalin-fixed, paraffin-embedded tissue after heat-induced antigen retrieval.

Requested From:

Japan

Laboratory Reagent For In Vitro Research Use Only

Not for resale without prior written consent from LifeSpan BioSciences, Inc.

Created on 9/23/2014

© 2014 LifeSpan BioSciences