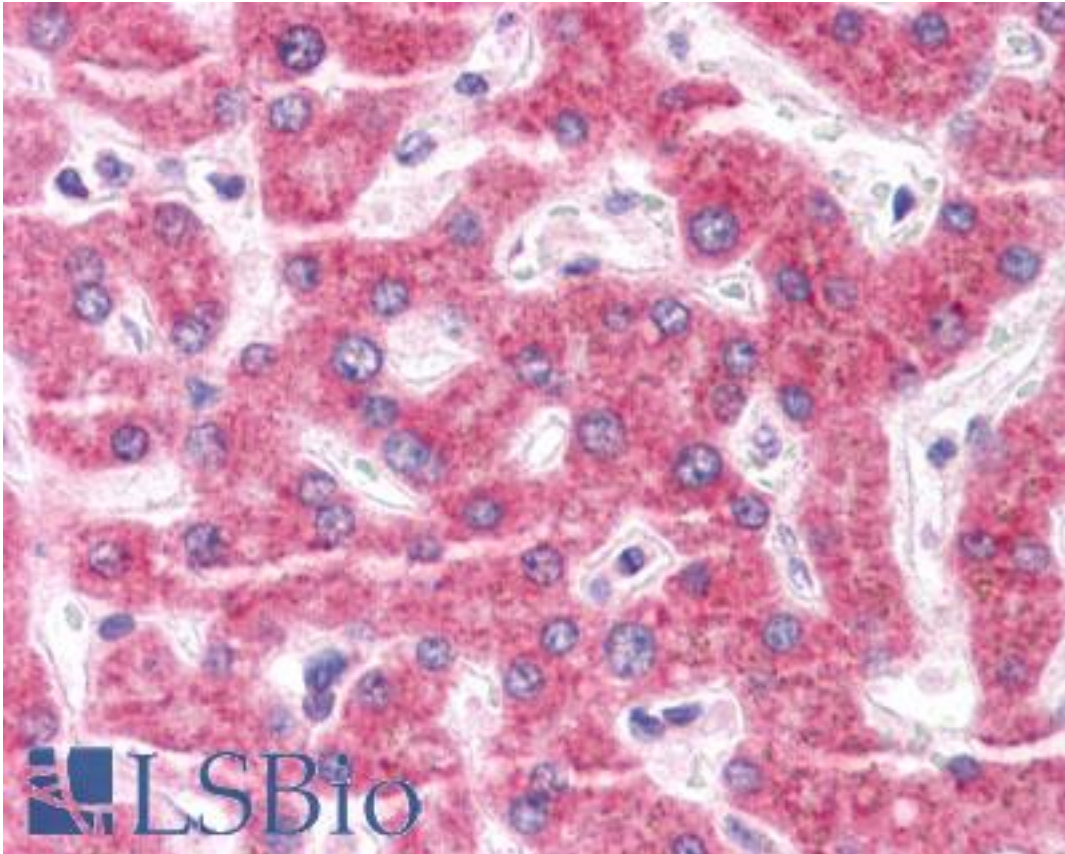


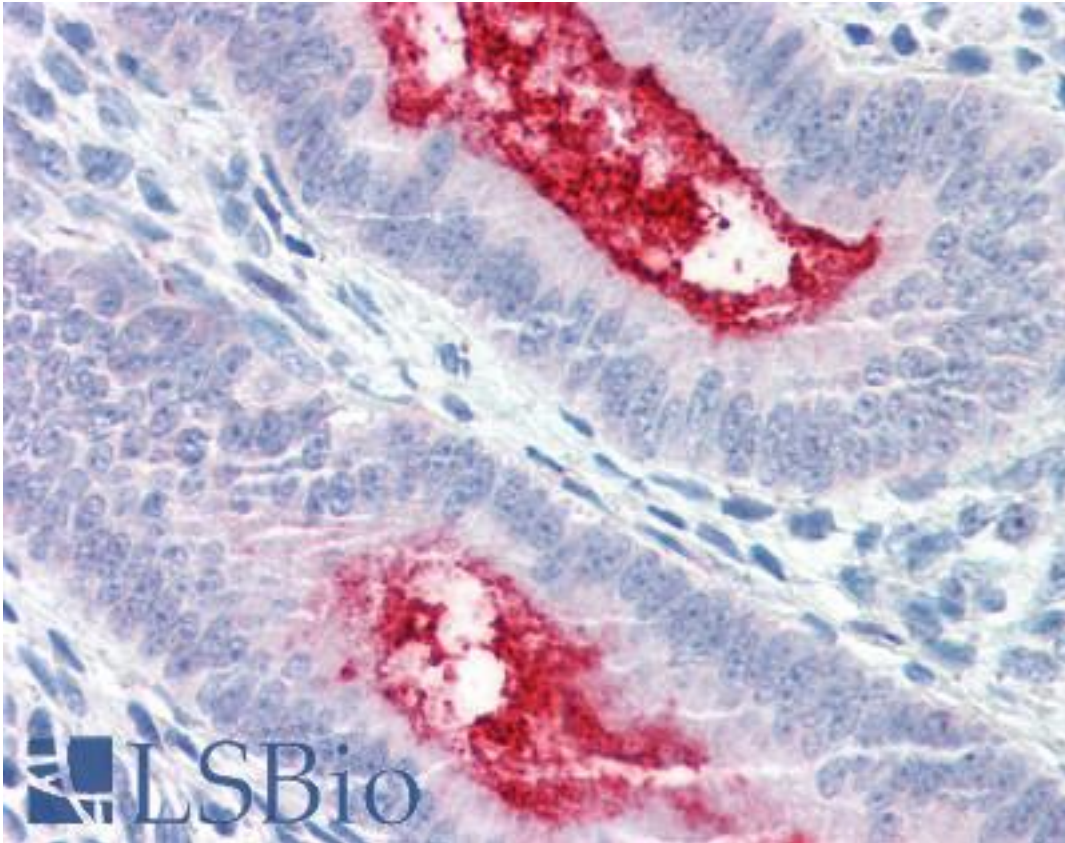
ENPP3 / CD203c Rabbit anti-Human Polyclonal (Internal) Antibody - LS-A9842 - LSBio	
CatalogID:	LS-A9842
Target:	ectonucleotide pyrophosphatase/phosphodiesterase 3 (ENPP3)
Synonyms:	ENPP3 Antibody, CD203c antigen Antibody, CD203c Antibody, E-NPP 3 Antibody, NPP3 Antibody, Phosphodiesterase-I beta Antibody, PD-IBETA Antibody, PDNP3 Antibody, Phosphodiesterase I beta Antibody, B10 Antibody, gp130RB13-6 Antibody
Family / Subfamily:	Phosphodiesterase - Other / not assigned-Phosphodiesterase - Other
Host	ENPP3 antibody was produced in Rabbit
Clonality:	Polyclonal
Immunogen Species:	ENPP3 / CD203c antibody was raised against Human
Antigen Type:	Synthetic peptide
Immunogen:	ENPP3 / CD203c antibody was raised against synthetic 19 amino acid peptide from internal region of human ENPP3. Percent identity with other species by BLAST analysis: Human, Orangutan, Gibbon, Monkey, Marmoset, Dog (100%); Bovine, Horse, Pig (95%); Panda, Bat (84%).
Specificity:	Human ENPP3. BLAST analysis of the peptide immunogen showed no homology with other human proteins.
Epitope:	Internal
Reactivity:	Human, Orangutan, Gibbon, Monkey, Dog
Predicted Reactivity:	Bovine, Horse, Pig
Purification:	Immunoaffinity purified
Presentation:	PBS, 0.1% sodium azide.
Recommended Storage:	Long term: -70°C; Short term: +4°C
Uses:	IHC - Paraffin (15 µg/ml) (Optimal dilution to be determined by the researcher)
Size:	50 µg
Concentration:	0.8 mg/ml

Immunohistochemistry Image:



Anti-ENPP3 antibody LS-A9842 IHC of human liver. Immunohistochemistry of formalin-fixed, paraffin-embedded tissue after heat-induced antigen retrieval.

Immunohistochemistry Image:



Anti-ENPP3 antibody LS-A9842 IHC of human uterus. Immunohistochemistry of formalin-fixed, paraffin-embedded tissue after heat-induced antigen retrieval.

Requested From:

Japan

Laboratory Reagent For In Vitro Research Use Only

Not for resale without prior written consent from LifeSpan BioSciences, Inc.

Created on 9/23/2014

© 2014 LifeSpan BioSciences