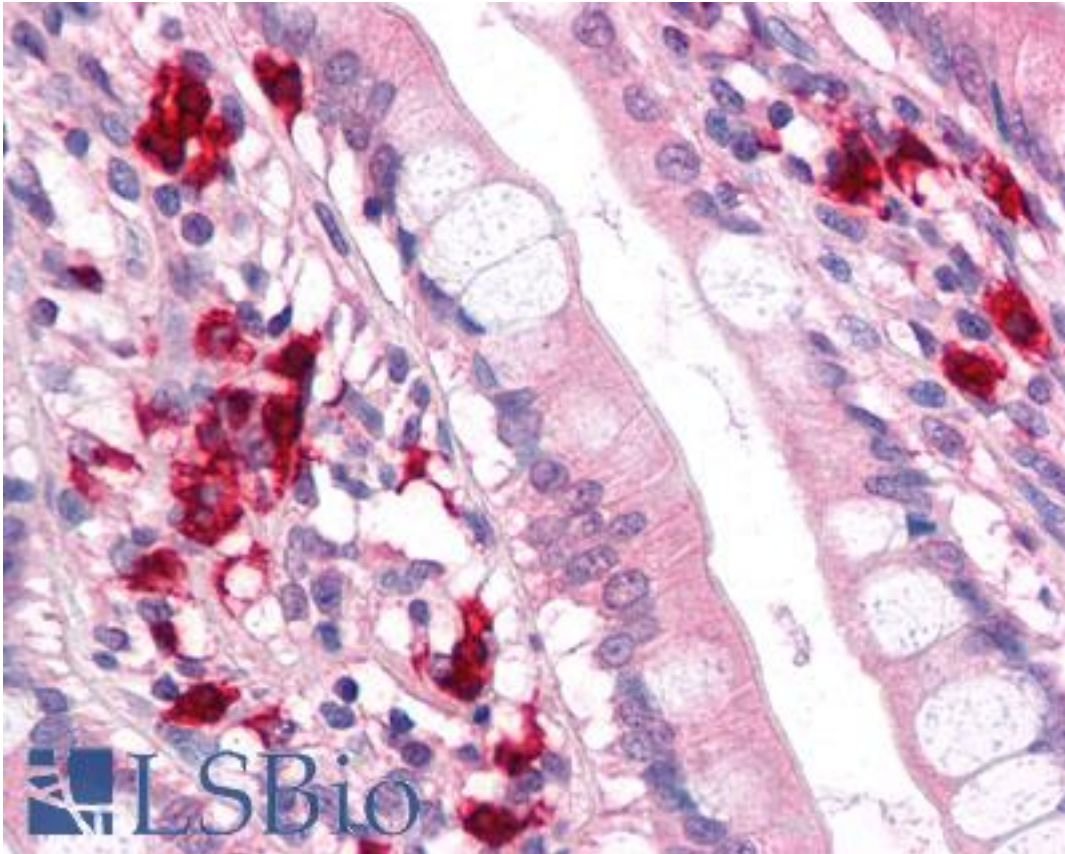


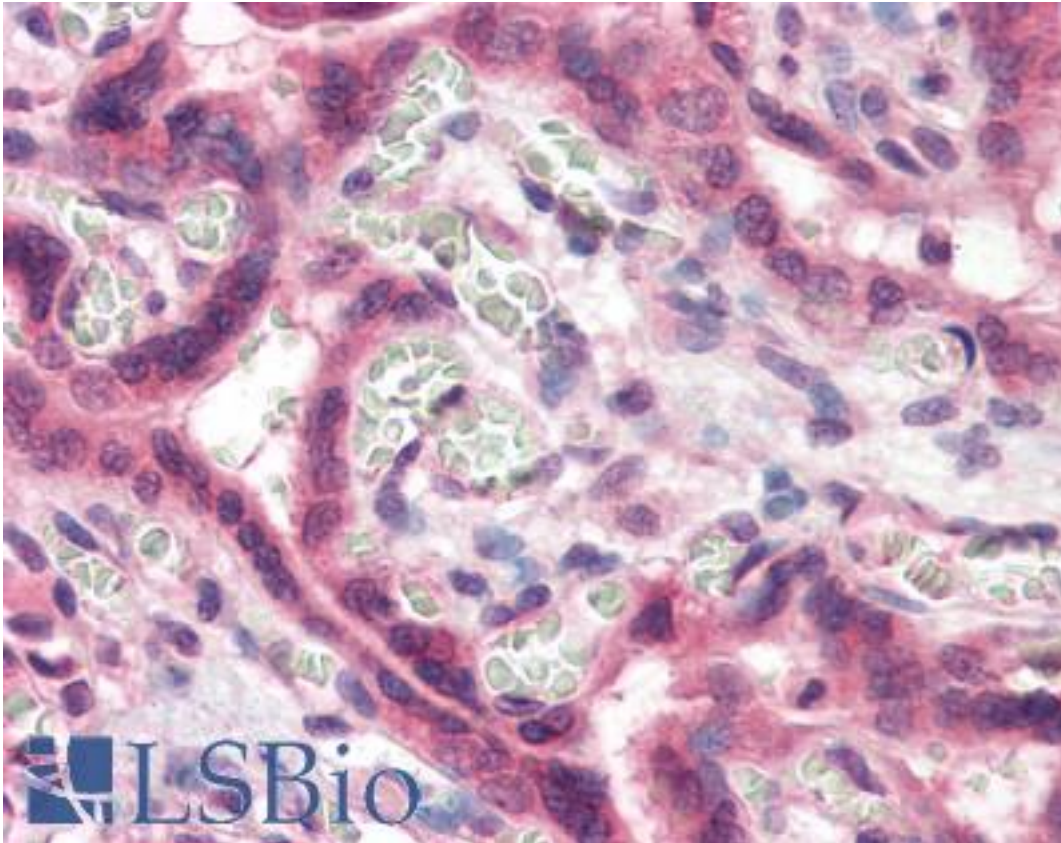
TFF2 / SP Rabbit anti-Human Polyclonal (Internal) Antibody - LS-A9841 - LSBio	
CatalogID:	LS-A9841
Target:	trefoil factor 2 (TFF2)
Synonyms:	TFF2 Antibody, SP Antibody, Spasmolysin Antibody, Trefoil factor 2 Antibody, SML1 Antibody, Spasmolytic polypeptide Antibody, Spasmolytic protein 1 Antibody
Host	TFF2 antibody was produced in Rabbit
Clonality:	Polyclonal
Immunogen Species:	TFF2 / SP antibody was raised against Human
Antigen Type:	Synthetic peptide
Immunogen:	TFF2 / SP antibody was raised against synthetic 11 amino acid peptide from internal region of human TFF2. Percent identity with other species by BLAST analysis: Human, Gorilla, Gibbon (100%); Marmoset, Dog (91%); Monkey, Mouse, Nematode (82%).
Specificity:	Human TFF2. BLAST analysis of the peptide immunogen showed no homology with other human proteins.
Epitope:	Internal
Reactivity:	Human, Gorilla, Gibbon
Predicted Reactivity:	Monkey, Dog
Purification:	Immunoaffinity purified
Presentation:	PBS, 0.1% sodium azide.
Recommended Storage:	Long term: -70°C; Short term: +4°C
Uses:	IHC - Paraffin (10 µg/ml) (Optimal dilution to be determined by the researcher)
Size:	50 µg
Concentration:	1 mg/ml

Immunohistochemistry Image:



Anti-TFF2 antibody LS-A9841 IHC of human small intestine. Immunohistochemistry of formalin-fixed, paraffin-embedded tissue after heat-induced antigen retrieval.

Immunohistochemistry Image:



Anti-TFF2 antibody LS-A9841 IHC of human placenta. Immunohistochemistry of formalin-fixed, paraffin-embedded tissue after heat-induced antigen retrieval.

Requested From:

Japan

Laboratory Reagent For In Vitro Research Use Only

Not for resale without prior written consent from LifeSpan BioSciences, Inc.

Created on 9/23/2014

© 2014 LifeSpan BioSciences