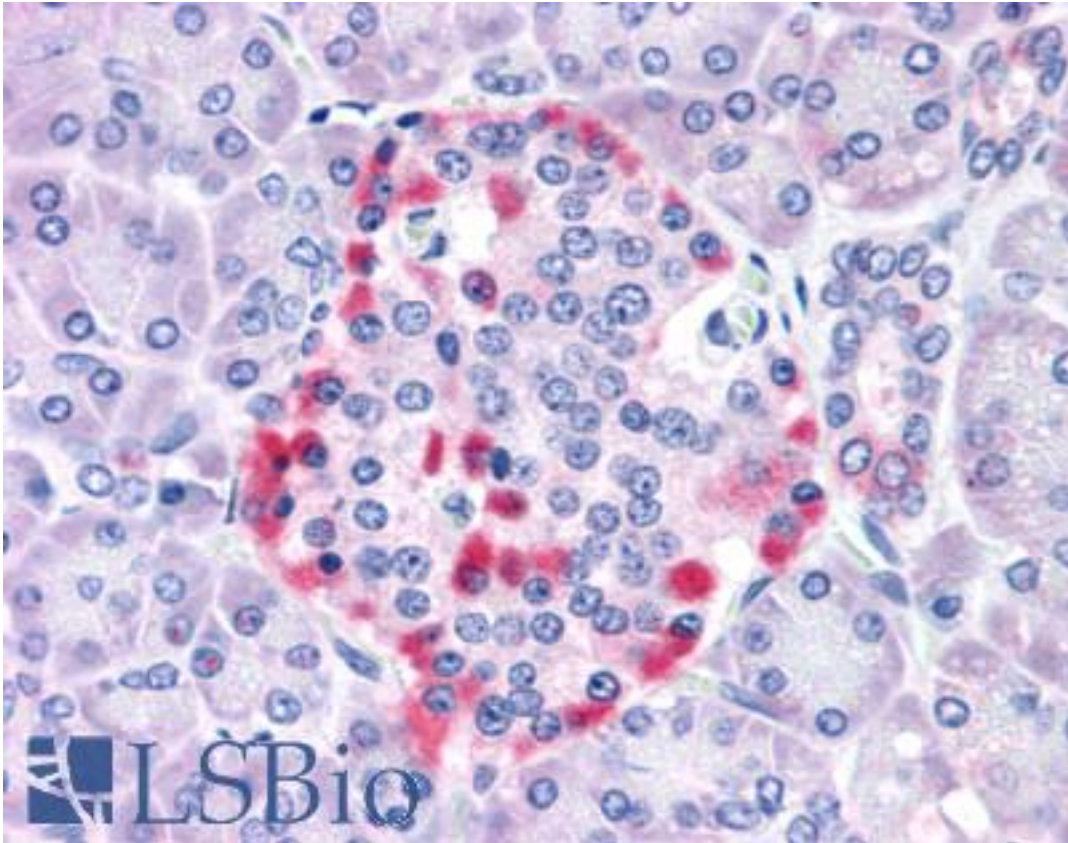


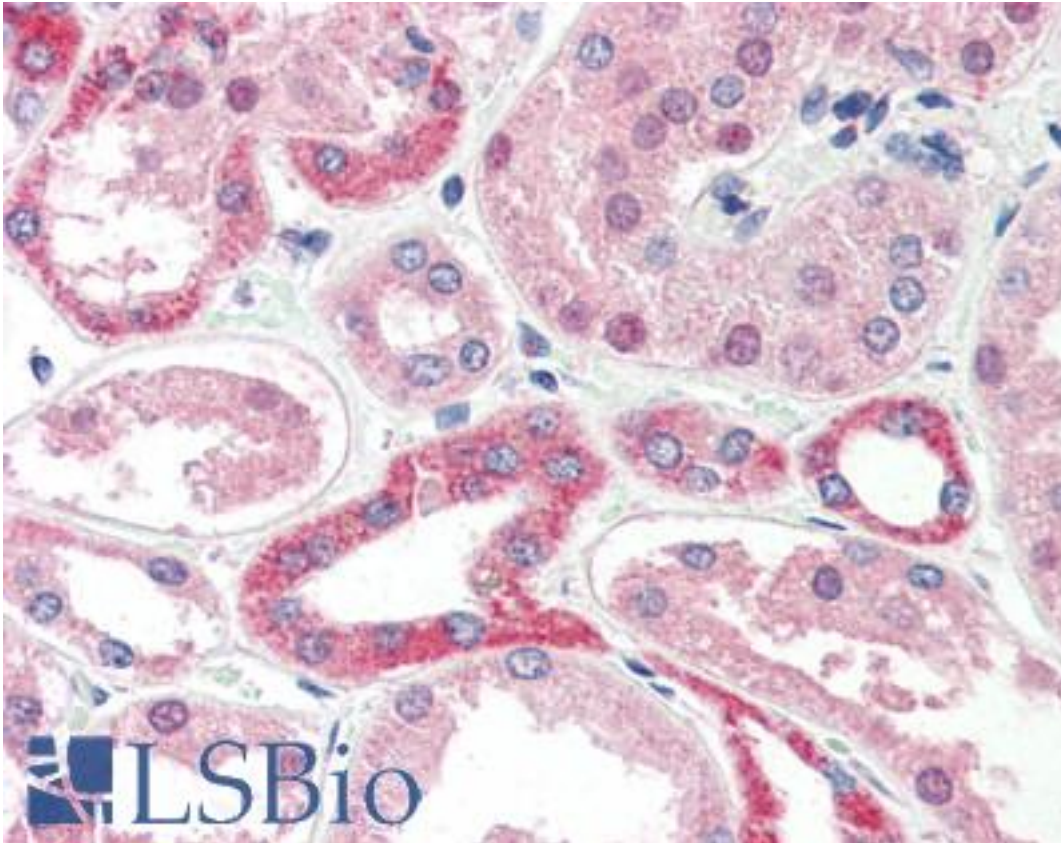
IGSF4C / CADM4 Rabbit anti-Human Polyclonal (Internal) Antibody - LS-A9839 - LSBio	
CatalogID:	LS-A9839
Target:	cell adhesion molecule 4 (CADM4)
Synonyms:	CADM4 Antibody, Cell adhesion molecule 4 Antibody, Nectin-like 4 Antibody, Nectin-like protein 4 Antibody, Necl-4 Antibody, NECL4 Antibody, IGSF4C Antibody, TSLC1-like 2 Antibody, SynCAM4 Antibody, TSLC1-like protein 2 Antibody, TSLL2 Antibody
Host	CADM4 antibody was produced in Rabbit
Clonality:	Polyclonal
Immunogen Species:	IGSF4C / CADM4 antibody was raised against Human
Antigen Type:	Synthetic peptide
Immunogen:	IGSF4C / CADM4 antibody was raised against synthetic 14 amino acid peptide from internal region of human CADM4 / NECL-4. Percent identity with other species by BLAST analysis: Human, Gorilla, Gibbon, Monkey, Marmoset, Mouse, Rat, Elephant, Panda, Bovine, Dog, Bat, Horse, Rabbit, Pig, Opossum, Platypus (100%).
Specificity:	Human CADM4 / NECL-4. BLAST analysis of the peptide immunogen showed no homology with other human proteins.
Epitope:	Internal
Reactivity:	Human, Gorilla, Gibbon, Monkey, Mouse, Rat, Bat, Bovine, Dog, Horse, Pig, Rabbit
Purification:	Immunoaffinity purified
Presentation:	PBS, 0.1% sodium azide.
Recommended Storage:	Long term: -70°C; Short term: +4°C
Uses:	IHC - Paraffin (10 - 15 µg/ml) (Optimal dilution to be determined by the researcher)
Size:	50 µg
Concentration:	0.8 mg/ml

Immunohistochemistry Image:



Anti-CADM4 / NECL-4 antibody LS-A9839 IHC of human pancreas. Immunohistochemistry of formalin-fixed, paraffin-embedded tissue after heat-induced antigen retrieval.

Immunohistochemistry Image:



Anti-CADM4 / NECL-4 antibody LS-A9839 IHC of human kidney. Immunohistochemistry of formalin-fixed, paraffin-embedded tissue after heat-induced antigen retrieval.

Requested From:

Japan

Laboratory Reagent For In Vitro Research Use Only

Not for resale without prior written consent from LifeSpan BioSciences, Inc.

Created on 9/23/2014

© 2014 LifeSpan BioSciences