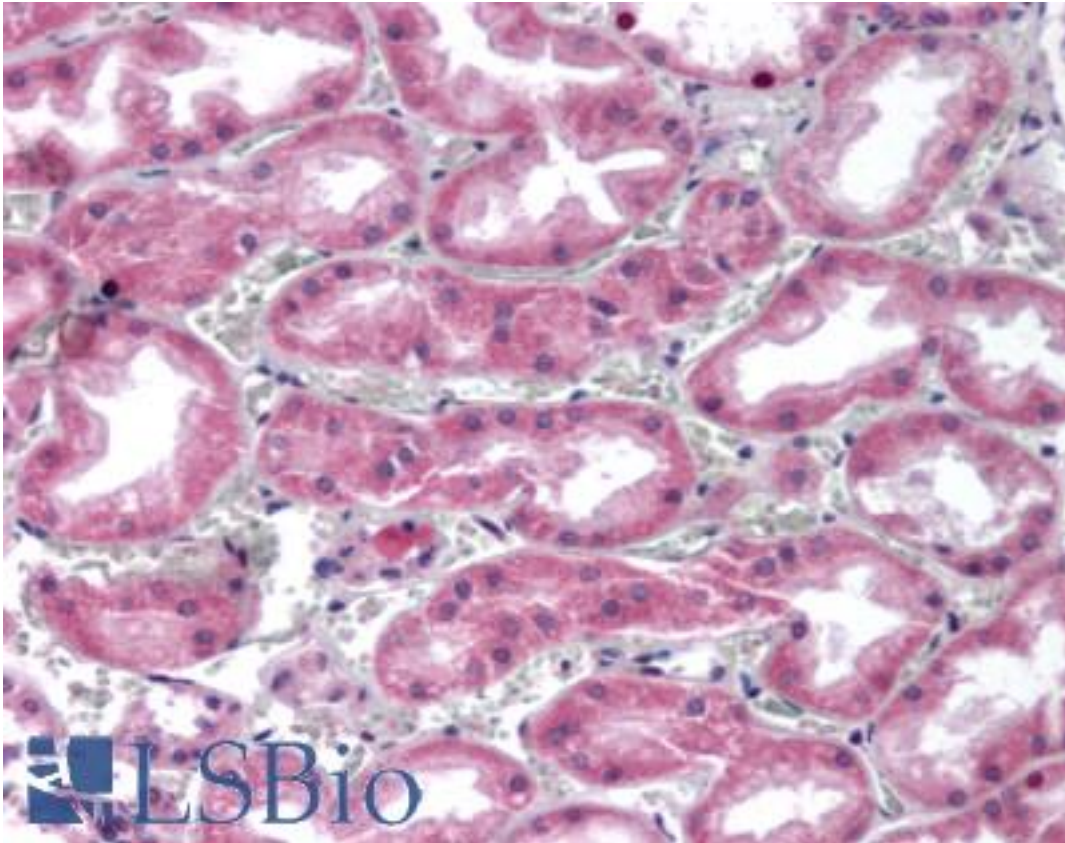


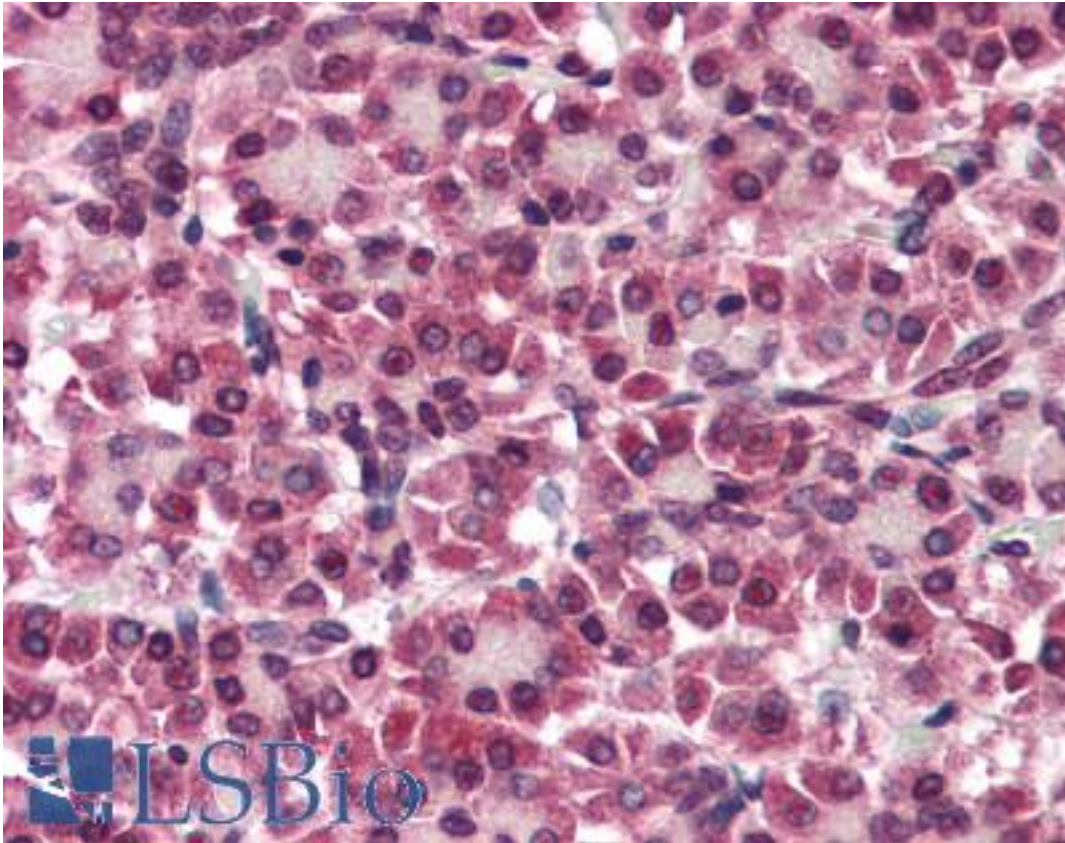
GPC4 / Glypican 4 Rabbit anti-Human Polyclonal (Internal) Antibody - LS-A9792 - LSBio	
<b>CatalogID:</b>	LS-A9792
<b>Target:</b>	glypican 4 (GPC4)
<b>Synonyms:</b>	GPC4 Antibody, DJ900E8.1 (glypican 4) Antibody, Glypican 4 Antibody, Glypican proteoglycan 4 Antibody, Glypican-4 Antibody, K-glypican Antibody
<b>Host</b>	GPC4 antibody was produced in Rabbit
<b>Clonality:</b>	Polyclonal
<b>Immunogen Species:</b>	GPC4 / Glypican 4 antibody was raised against Human
<b>Antigen Type:</b>	Synthetic peptide
<b>Immunogen:</b>	GPC4 / Glypican 4 antibody was raised against synthetic 16 amino acid peptide from internal region of human GPC4 / Glypican 4. Percent identity with other species by BLAST analysis: Human, Gorilla, Gibbon, Monkey, Mouse, Rat, Bat, Hamster (100%); Marmoset, Dog, Elephant, Panda, Rabbit (94%); Bovine, Horse, Pig (88%).
<b>Specificity:</b>	Human GPC4 / Glypican 4. BLAST analysis of the peptide immunogen showed no homology with other human proteins.
<b>Epitope:</b>	Internal
<b>Reactivity:</b>	Human, Gorilla, Gibbon, Mouse, Rat, Bat, Hamster
<b>Predicted Reactivity:</b>	Monkey, Dog, Rabbit
<b>Purification:</b>	Immunoaffinity purified
<b>Presentation:</b>	PBS, 0.1% sodium azide.
<b>Recommended Storage:</b>	Long term: -70°C; Short term: +4°C
<b>Usage Summary:</b>	Immunohistochemistry: LS-A9792 was validated for use in immunohistochemistry on a panel of 21 formalin-fixed, paraffin-embedded (FFPE) human tissues after heat induced antigen retrieval in pH 6.0 citrate buffer. After incubation with the primary antibody, slides were incubated with biotinylated secondary antibody, followed by alkaline phosphatase-streptavidin and chromogen. The stained slides were evaluated by a pathologist to confirm staining specificity. The optimal working concentration for LS-A9792 was determined to be 5-10 ug/ml.
<b>Uses:</b>	IHC - Paraffin (5 - 10 µg/ml) (Optimal dilution to be determined by the researcher)
<b>Size:</b>	50 µg
<b>Concentration:</b>	1 mg/ml

**Immunohistochemistry Image:**



Anti-GPC4 / Glypican 4 antibody LS-A9792 IHC of human kidney. Immunohistochemistry of formalin-fixed, paraffin-embedded tissue after heat-induced antigen retrieval.

**Immunohistochemistry Image:**



Anti-GPC4 / Glypican 4 antibody LS-A9792 IHC of human pancreas. Immunohistochemistry of formalin-fixed, paraffin-embedded tissue after heat-induced antigen retrieval.

**Requested From:**

Japan

Laboratory Reagent For In Vitro Research Use Only

Not for resale without prior written consent from LifeSpan BioSciences, Inc.

Created on 9/23/2014

© 2014 LifeSpan BioSciences