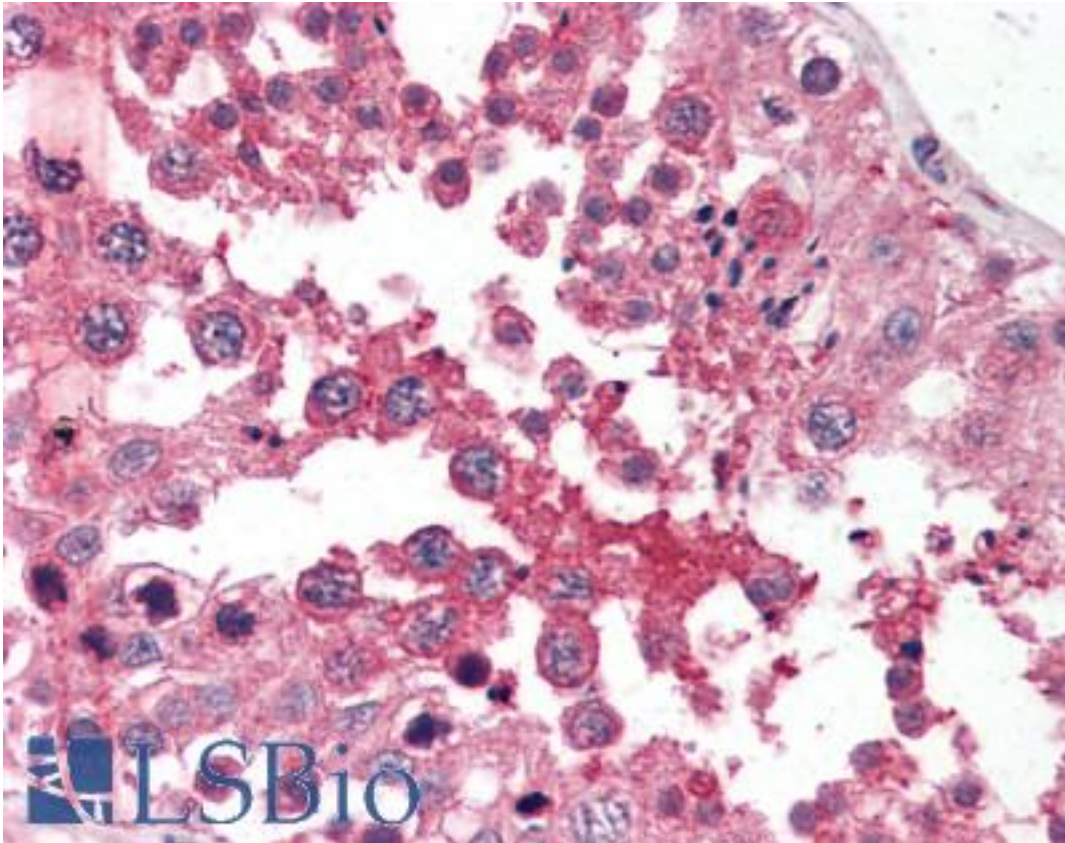


GPC4 / Glypican 4 Rabbit anti-Human Polyclonal (N-Terminus) Antibody - LS-A9791 - LSBio	
<b>CatalogID:</b>	LS-A9791
<b>Target:</b>	glypican 4 (GPC4)
<b>Synonyms:</b>	GPC4 Antibody, DJ900E8.1 (glypican 4) Antibody, Glypican 4 Antibody, Glypican proteoglycan 4 Antibody, Glypican-4 Antibody, K-glypican Antibody
<b>Host</b>	GPC4 antibody was produced in Rabbit
<b>Clonality:</b>	Polyclonal
<b>Immunogen Species:</b>	GPC4 / Glypican 4 antibody was raised against Human
<b>Antigen Type:</b>	Synthetic peptide
<b>Immunogen:</b>	GPC4 / Glypican 4 antibody was raised against synthetic 16 amino acid peptide from N-Terminus of human GPC4 / Glypican 4. Percent identity with other species by BLAST analysis: Human, Gorilla, Gibbon, Monkey, Hamster, Panda, Dog, Pig (100%); Marmoset, Mouse, Elephant, Bovine, Horse (94%); Rat, Bat, Rabbit (88%).
<b>Specificity:</b>	Human GPC4 / Glypican 4. BLAST analysis of the peptide immunogen showed no homology with other human proteins.
<b>Epitope:</b>	N-Terminus
<b>Reactivity:</b>	Human, Gorilla, Gibbon, Dog, Hamster, Pig
<b>Predicted Reactivity:</b>	Monkey, Mouse, Bovine, Horse
<b>Purification:</b>	Immunoaffinity purified
<b>Presentation:</b>	PBS, 0.1% sodium azide.
<b>Recommended Storage:</b>	Long term: -70°C; Short term: +4°C
<b>Uses:</b>	IHC - Paraffin (2.5 - 5 µg/ml) (Optimal dilution to be determined by the researcher)
<b>Size:</b>	50 µg
<b>Concentration:</b>	1 mg/ml

**Immunohistochemistry Image:**



Anti-GPC4 / Glypican 4 antibody LS-A9791 IHC of human testis. Immunohistochemistry of formalin-fixed, paraffin-embedded tissue after heat-induced antigen retrieval.

**Requested From:**

Japan

Laboratory Reagent For In Vitro Research Use Only

Not for resale without prior written consent from LifeSpan BioSciences, Inc.

Created on 9/23/2014

© 2014 LifeSpan BioSciences