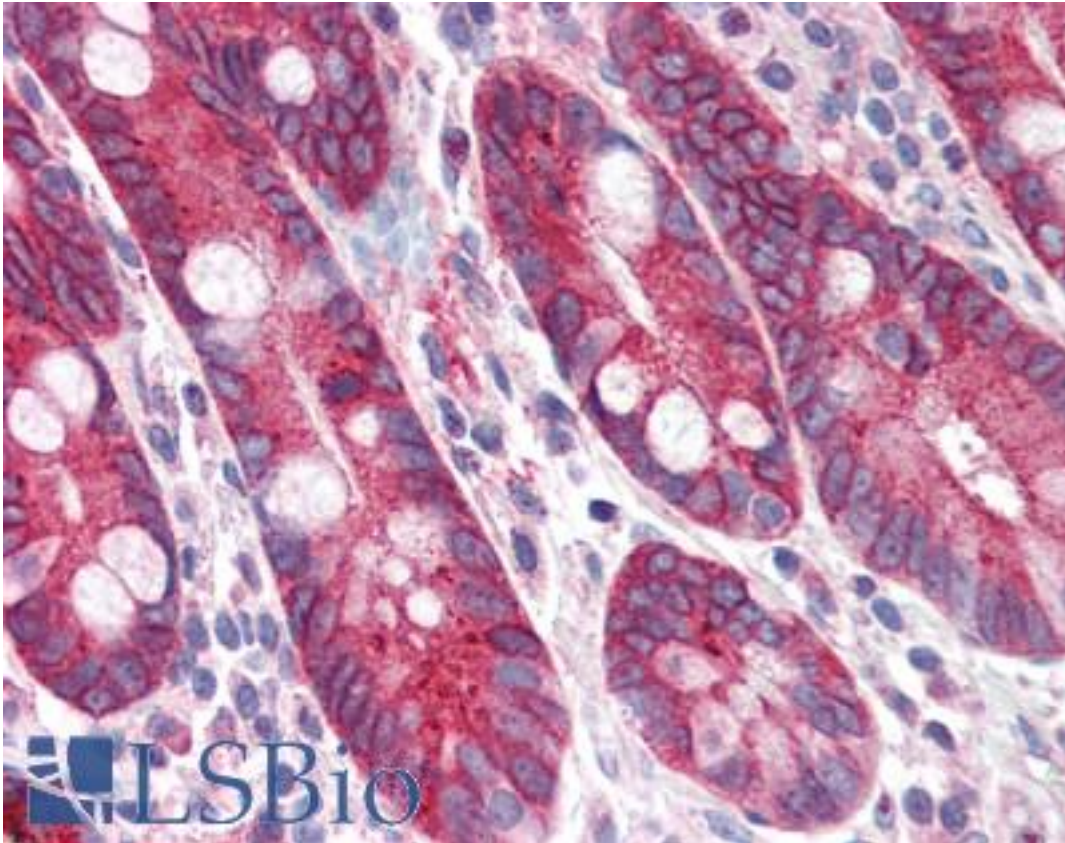


PIGR Rabbit anti-Human Polyclonal (Internal) Antibody - LS-A9790 - LSBio

| | |
|-----------------------------|---|
| CatalogID: | LS-A9790 |
| Target: | Polymeric Immunoglobulin Receptor (PIGR) |
| Synonyms: | PIGR Antibody, Poly-Ig receptor Antibody |
| Host | PIGR antibody was produced in Rabbit |
| Clonality: | Polyclonal |
| Immunogen Species: | PIGR antibody was raised against Human |
| Antigen Type: | Synthetic peptide |
| Immunogen: | PIGR antibody was raised against synthetic 18 amino acid peptide from internal region of human PIGR. Percent identity with other species by BLAST analysis: Human (100%); Gorilla, Orangutan, Gibbon (89%). |
| Specificity: | Human PIGR. BLAST analysis of the peptide immunogen showed no homology with other human proteins. |
| Epitope: | Internal |
| Reactivity: | Human |
| Purification: | Immunoaffinity purified |
| Presentation: | PBS, 0.1% sodium azide. |
| Recommended Storage: | Long term: -70°C; Short term: +4°C |
| Uses: | IHC - Paraffin (1.25 - 2.5 µg/ml) (Optimal dilution to be determined by the researcher) |
| Size: | 50 µg |
| Concentration: | 1 mg/ml |

Immunohistochemistry Image:



Anti-PIGR antibody LS-A9790 IHC of human small intestine. Immunohistochemistry of formalin-fixed, paraffin-embedded tissue after heat-induced antigen retrieval.

Requested From:

Japan

Laboratory Reagent For In Vitro Research Use Only

Not for resale without prior written consent from LifeSpan BioSciences, Inc.

Created on 9/23/2014

© 2014 LifeSpan BioSciences