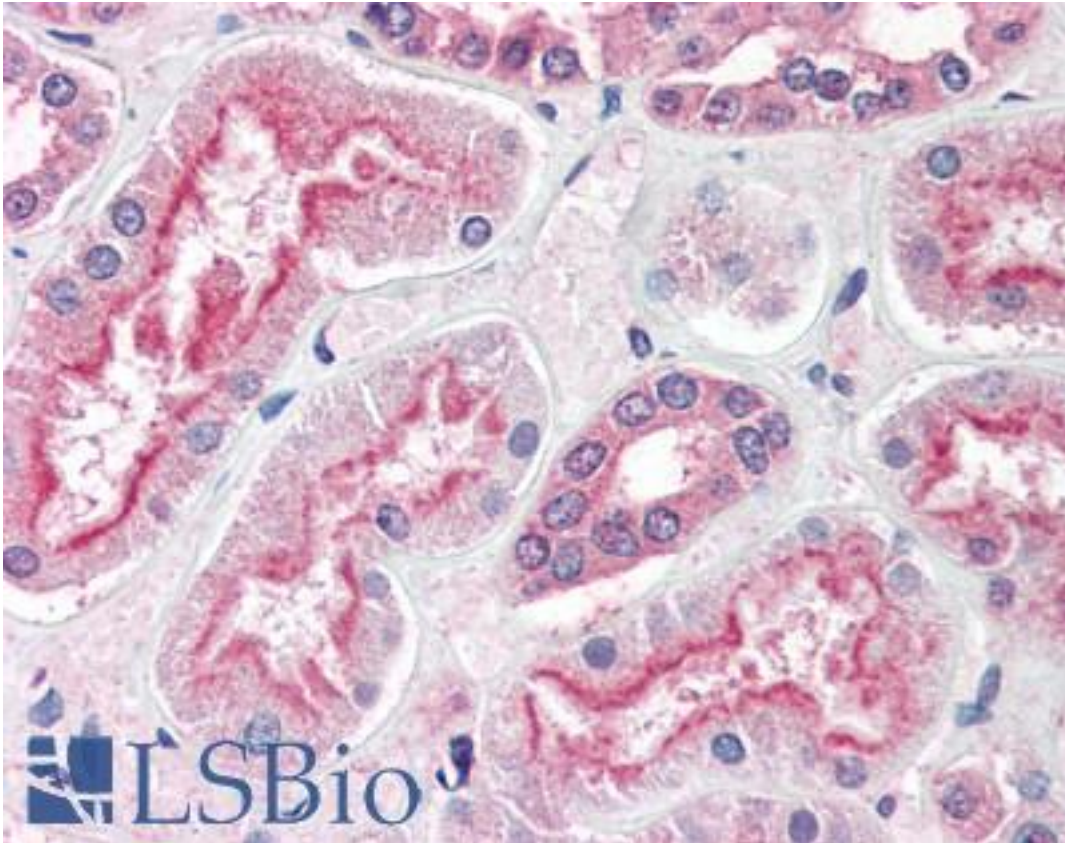


ADAM20 Rabbit anti-Human Polyclonal (Internal) Antibody - LS-A9787 - LSBio

CatalogID:	LS-A9787
Target:	ADAM metallopeptidase domain 20 (ADAM20)
Synonyms:	ADAM20 Antibody, ADAM 20 Antibody
Family / Subfamily:	Protease / Metallopeptidase M12B
Host	ADAM20 antibody was produced in Rabbit
Clonality:	Polyclonal
Immunogen Species:	ADAM20 antibody was raised against Human
Antigen Type:	Synthetic peptide
Immunogen:	ADAM20 antibody was raised against synthetic 14 amino acid peptide from internal region of human ADAM20. Percent identity with other species by BLAST analysis: Human (100%); Gorilla, Gibbon, Marmoset (93%).
Specificity:	Human ADAM20. BLAST analysis of the peptide immunogen showed no homology with other human proteins.
Epitope:	Internal
Reactivity:	Human
Predicted Reactivity:	Gorilla, Gibbon, Monkey
Purification:	Immunoaffinity purified
Presentation:	PBS, 0.1% sodium azide.
Recommended Storage:	Long term: -70°C; Short term: +4°C
Uses:	IHC - Paraffin (1.25 - 2.5 µg/ml) (Optimal dilution to be determined by the researcher)
Size:	50 µg
Concentration:	1 mg/ml

Immunohistochemistry Image:



Anti-ADAM20 antibody LS-A9787 IHC of human kidney. Immunohistochemistry of formalin-fixed, paraffin-embedded tissue after heat-induced antigen retrieval.

Requested From:

Japan

Laboratory Reagent For In Vitro Research Use Only

Not for resale without prior written consent from LifeSpan BioSciences, Inc.

Created on 9/23/2014

© 2014 LifeSpan BioSciences