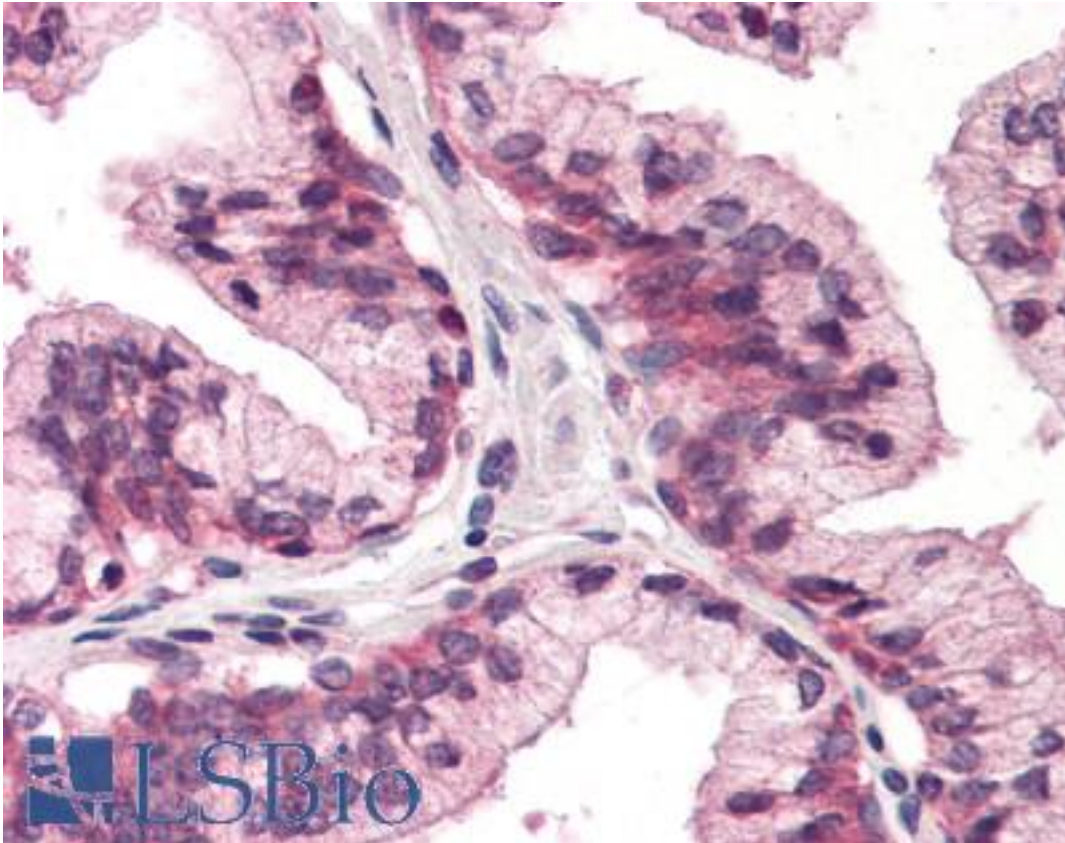


ATP1B3 Rabbit anti-Human Polyclonal (Internal) Antibody - LS-A9784 - LSBio

<b>CatalogID:</b>	LS-A9784
<b>Target:</b>	ATPase, Na <sup>+</sup> /K <sup>+</sup> transporting, beta 3 polypeptide (ATP1B3)
<b>Synonyms:</b>	ATP1B3 Antibody, ATPB-3 Antibody, CD298 Antibody, CD298 antigen Antibody
<b>Family / Subfamily:</b>	Transporter / ATPase - P type, beta subunit
<b>Host</b>	ATP1B3 antibody was produced in Rabbit
<b>Clonality:</b>	Polyclonal
<b>Immunogen Species:</b>	ATP1B3 antibody was raised against Human
<b>Antigen Type:</b>	Synthetic peptide
<b>Immunogen:</b>	ATP1B3 antibody was raised against synthetic 17 amino acid peptide from internal region of human ATP1B3. Percent identity with other species by BLAST analysis: Human, Gibbon, Monkey, Marmoset (100%); Guinea pig (94%); Rabbit, Lizard (88%); Elephant, Panda, Bat, Bovine, Dog, Horse, Pig, Turkey, Chicken, Xenopus (82%).
<b>Specificity:</b>	Human ATP1B3. BLAST analysis of the peptide immunogen showed no homology with other human proteins.
<b>Epitope:</b>	Internal
<b>Reactivity:</b>	Human, Gibbon, Monkey
<b>Predicted Reactivity:</b>	Guinea pig
<b>Purification:</b>	Immunoaffinity purified
<b>Presentation:</b>	PBS, 0.1% sodium azide.
<b>Recommended Storage:</b>	Long term: -70°C; Short term: +4°C
<b>Uses:</b>	IHC - Paraffin (5 µg/ml) (Optimal dilution to be determined by the researcher)
<b>Size:</b>	50 µg
<b>Concentration:</b>	1 mg/ml

**Immunohistochemistry Image:**



Anti-ATP1B3 antibody LS-A9784 IHC of human prostate. Immunohistochemistry of formalin-fixed, paraffin-embedded tissue after heat-induced antigen retrieval.

**Requested From:**

Japan

Laboratory Reagent For In Vitro Research Use Only

Not for resale without prior written consent from LifeSpan BioSciences, Inc.

Created on 9/23/2014

© 2014 LifeSpan BioSciences