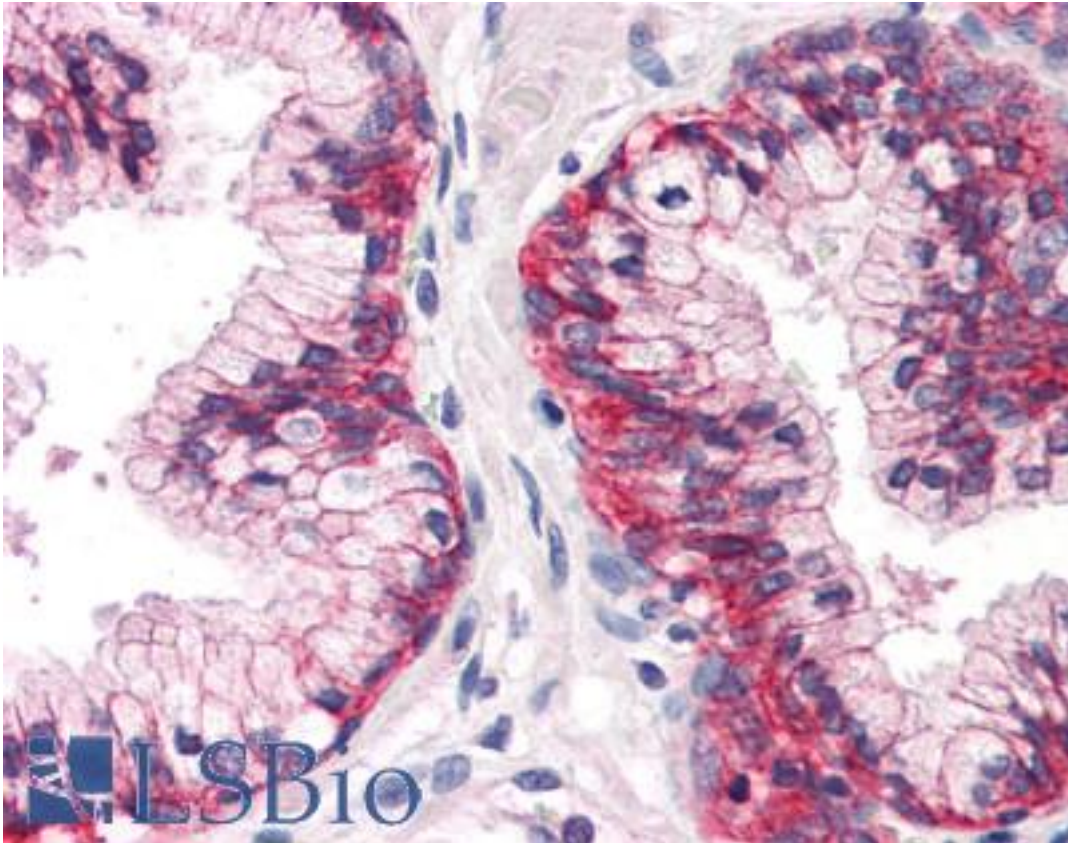


ATP1B3 Rabbit anti-Human Polyclonal (Internal) Antibody - LS-A9783 - LSBio

CatalogID:	LS-A9783
Target:	ATPase, Na ⁺ /K ⁺ transporting, beta 3 polypeptide (ATP1B3)
Synonyms:	ATP1B3 Antibody, ATPB-3 Antibody, CD298 Antibody, CD298 antigen Antibody
Family / Subfamily:	Transporter / ATPase - P type, beta subunit
Host	ATP1B3 antibody was produced in Rabbit
Clonality:	Polyclonal
Immunogen Species:	ATP1B3 antibody was raised against Human
Antigen Type:	Synthetic peptide
Immunogen:	ATP1B3 antibody was raised against synthetic 18 amino acid peptide from internal region of human ATP1B3. Percent identity with other species by BLAST analysis: Human, Monkey (100%); Gibbon (94%).
Specificity:	Human ATP1B3. BLAST analysis of the peptide immunogen showed no homology with other human proteins.
Epitope:	Internal
Reactivity:	Human, Monkey
Predicted Reactivity:	Gibbon
Purification:	Immunoaffinity purified
Presentation:	PBS, 0.1% sodium azide.
Recommended Storage:	Long term: -70°C; Short term: +4°C
Uses:	IHC - Paraffin (5 µg/ml) (Optimal dilution to be determined by the researcher)
Size:	50 µg
Concentration:	1 mg/ml

Immunohistochemistry Image:



Anti-ATP1B3 antibody LS-A9783 IHC of human prostate. Immunohistochemistry of formalin-fixed, paraffin-embedded tissue after heat-induced antigen retrieval.

Requested From:

Japan

Laboratory Reagent For In Vitro Research Use Only

Not for resale without prior written consent from LifeSpan BioSciences, Inc.

Created on 9/23/2014

© 2014 LifeSpan BioSciences