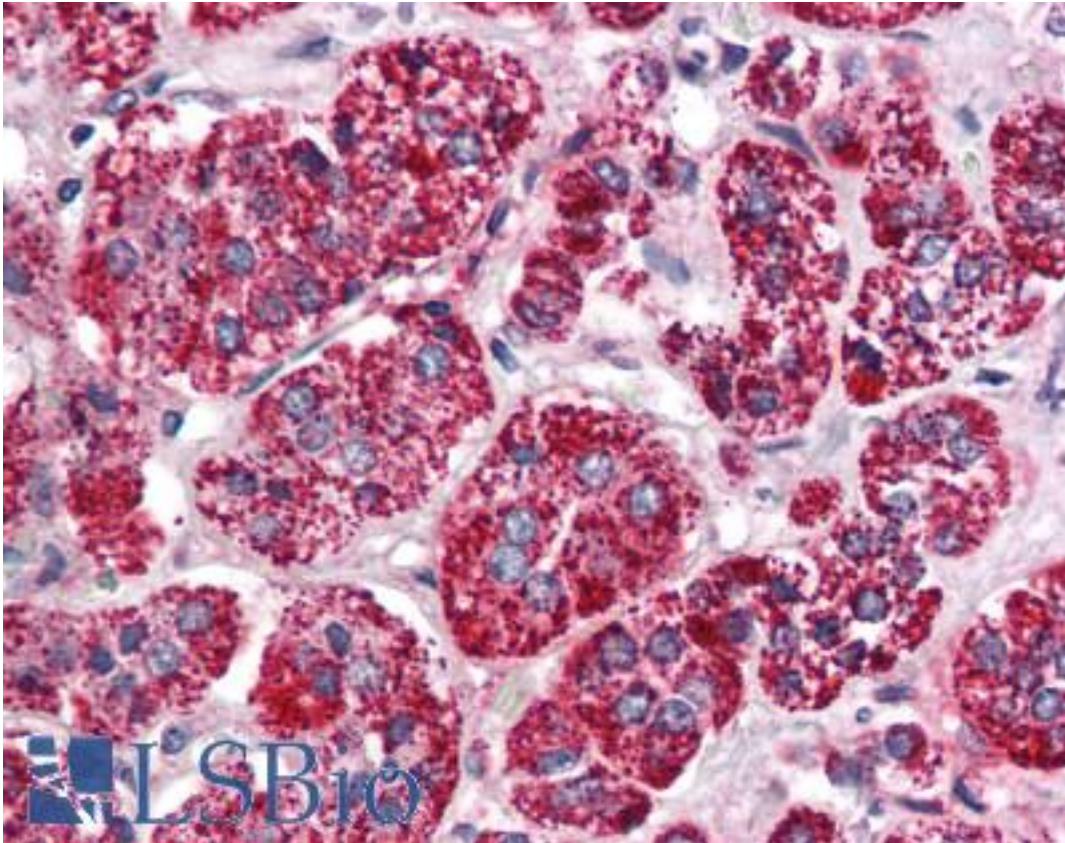


Renal Dipeptidase / DPEP1 Rabbit anti-Human Polyclonal (Internal) Antibody - LS-A9781 - LSBio	
<b>CatalogID:</b>	LS-A9781
<b>Target:</b>	dipeptidase 1 (renal) (DPEP1)
<b>Synonyms:</b>	DPEP1 Antibody, Dipeptidase 1 (renal) Antibody, Dehydropeptidase-I Antibody, Dipeptidase 1 Antibody, HRDP Antibody, Microsomal dipeptidase Antibody, Renal dipeptidase Antibody, RDP Antibody
<b>Family / Subfamily:</b>	Exopeptidase / Metallopeptidase M19
<b>Host</b>	DPEP1 antibody was produced in Rabbit
<b>Clonality:</b>	Polyclonal
<b>Immunogen Species:</b>	Renal Dipeptidase / DPEP1 antibody was raised against Human
<b>Antigen Type:</b>	Synthetic peptide
<b>Immunogen:</b>	Renal Dipeptidase / DPEP1 antibody was raised against synthetic 19 amino acid peptide from internal region of human DPEP1. Percent identity with other species by BLAST analysis: Human, Gorilla, Gibbon (100%); Monkey (95%).
<b>Specificity:</b>	Human DPEP1. BLAST analysis of the peptide immunogen showed no homology with other human proteins.
<b>Epitope:</b>	Internal
<b>Reactivity:</b>	Human, Gorilla, Gibbon
<b>Predicted Reactivity:</b>	Monkey
<b>Purification:</b>	Immunoaffinity purified
<b>Presentation:</b>	PBS, 0.1% sodium azide.
<b>Recommended Storage:</b>	Long term: -70°C; Short term: +4°C
<b>Uses:</b>	IHC - Paraffin (2.5 µg/ml) (Optimal dilution to be determined by the researcher)
<b>Size:</b>	50 µg
<b>Concentration:</b>	1 mg/ml

**Immunohistochemistry Image:**



Anti-DPEP1 antibody LS-A9781 IHC of human adrenal. Immunohistochemistry of formalin-fixed, paraffin-embedded tissue after heat-induced antigen retrieval.

**Requested From:**

Japan

Laboratory Reagent For In Vitro Research Use Only

Not for resale without prior written consent from LifeSpan BioSciences, Inc.

Created on 9/23/2014

© 2014 LifeSpan BioSciences