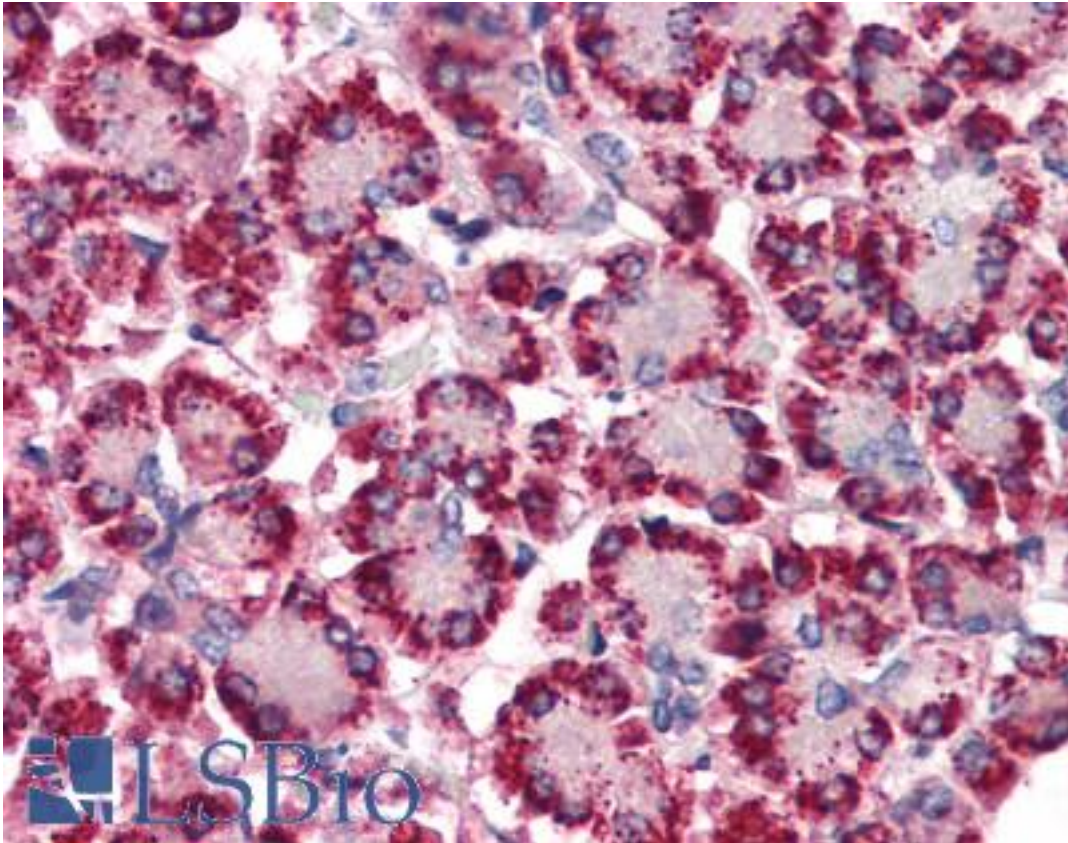


**STEAP4 Rabbit anti-Human Polyclonal (N-Terminus) Antibody - LS-A9773 - LSBio**

<b>CatalogID:</b>	LS-A9773
<b>Target:</b>	STEAP family member 4 (STEAP4)
<b>Synonyms:</b>	STEAP4 Antibody, STEAP family member 4 Antibody, Metalloredutase STEAP4 Antibody, STAMP2 Antibody, TIARP Antibody, TNFAIP9 Antibody
<b>Host</b>	STEAP4 antibody was produced in Rabbit
<b>Clonality:</b>	Polyclonal
<b>Immunogen Species:</b>	STEAP4 antibody was raised against Human
<b>Antigen Type:</b>	Synthetic peptide
<b>Immunogen:</b>	STEAP4 antibody was raised against synthetic 15 amino acid peptide from N-Terminus of human STEAP4. Percent identity with other species by BLAST analysis: Human (100%); Gorilla, Monkey, Marmoset (93%); Gibbon, Mouse, Bat, Horse (87%); Hamster, Elephant, Panda, Rabbit, Pig, Xenopus (80%).
<b>Specificity:</b>	Human STEAP4. BLAST analysis of the peptide immunogen showed no homology with other human proteins.
<b>Epitope:</b>	N-Terminus
<b>Reactivity:</b>	Human
<b>Predicted Reactivity:</b>	Gorilla, Monkey
<b>Purification:</b>	Immunoaffinity purified
<b>Presentation:</b>	PBS, 0.1% sodium azide.
<b>Recommended Storage:</b>	Long term: -70°C; Short term: +4°C
<b>Uses:</b>	IHC - Paraffin (2.5 µg/ml) (Optimal dilution to be determined by the researcher)
<b>Size:</b>	50 µg
<b>Concentration:</b>	1 mg/ml

**Immunohistochemistry Image:**



Anti-STEAP4 antibody LS-A9773 IHC of human pancreas. Immunohistochemistry of formalin-fixed, paraffin-embedded tissue after heat-induced antigen retrieval.

**Requested From:**

Japan

Laboratory Reagent For In Vitro Research Use Only

Not for resale without prior written consent from LifeSpan BioSciences, Inc.

Created on 9/23/2014

© 2014 LifeSpan BioSciences