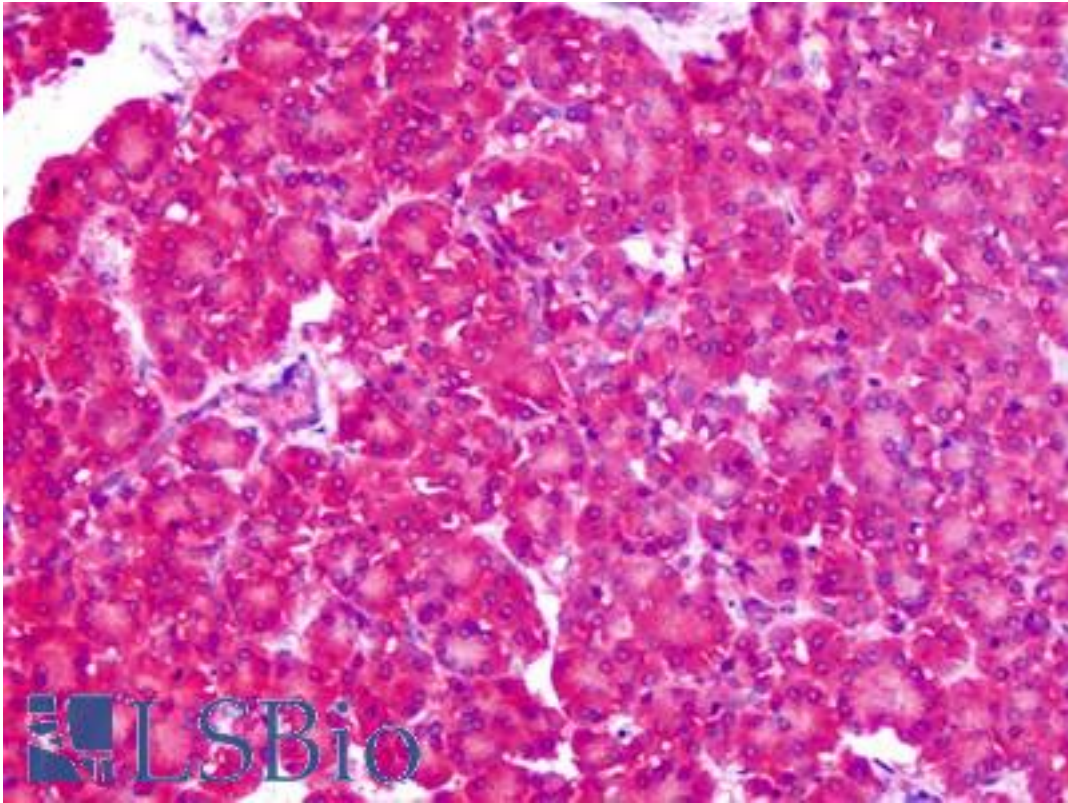


SLC1A4 / ASCT1 Rabbit anti-Human Polyclonal (N-Terminus) Antibody - LS-A9772 - LSBio

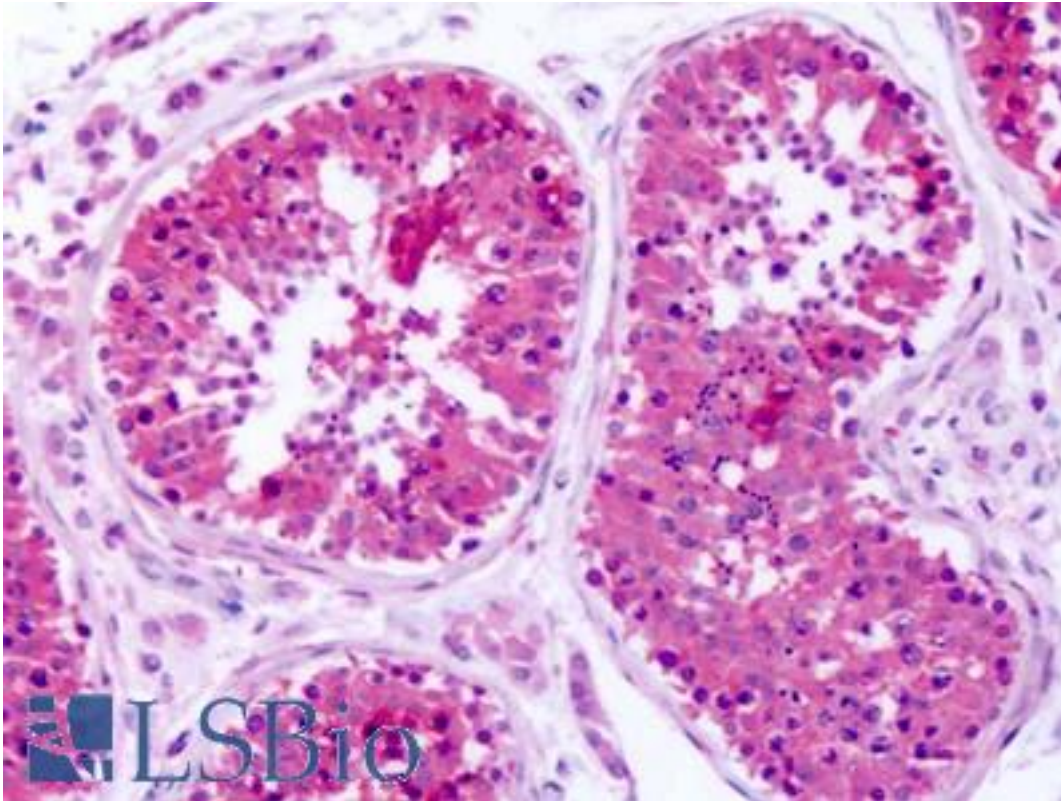
| | |
|-----------------------------|---|
| CatalogID: | LS-A9772 |
| Target: | solute carrier family 1 (glutamate/neutral amino acid transporter), member 4 (SLC1A4) |
| Synonyms: | SLC1A4 Antibody, ASCT1 Antibody, SATT Antibody, ASCT-1 Antibody |
| Family / Subfamily: | Transporter / Sodium:dicarboxylate symporter |
| Host | SLC1A4 antibody was produced in Rabbit |
| Clonality: | Polyclonal |
| Immunogen Species: | SLC1A4 / ASCT1 antibody was raised against Human |
| Antigen Type: | Synthetic peptide |
| Immunogen: | SLC1A4 / ASCT1 antibody was raised against synthetic 17 amino acid peptide from N-Terminus of human SLC1A4. Percent identity with other species by BLAST analysis: Human, Gorilla, Gibbon, Marmoset (100%); Bovine (88%). |
| Specificity: | Human SLC1A4. BLAST analysis of the peptide immunogen showed no homology with other human proteins. |
| Epitope: | N-Terminus |
| Reactivity: | Human, Gorilla, Gibbon, Monkey |
| Purification: | Immunoaffinity purified |
| Presentation: | PBS, 0.1% sodium azide. |
| Recommended Storage: | Long term: -70°C; Short term: +4°C |
| Uses: | IHC - Paraffin (2.5 µg/ml) (Optimal dilution to be determined by the researcher) |
| Size: | 50 µg |
| Concentration: | 1 mg/ml |

Immunohistochemistry Image:



Anti-ASCT1 / SLC1A4 antibody IHC of human pancreas. Immunohistochemistry of formalin-fixed, paraffin-embedded tissue after heat-induced antigen retrieval. Antibody LS-A9772 dilution 2.5 ug/ml.

Immunohistochemistry Image:



Anti-ASCT1 / SLC1A4 antibody IHC of human testis. Immunohistochemistry of formalin-fixed, paraffin-embedded tissue after heat-induced antigen retrieval. Antibody LS-A9772 dilution 2.5 ug/ml.

Requested From:

Japan

Laboratory Reagent For In Vitro Research Use Only

Not for resale without prior written consent from LifeSpan BioSciences, Inc.

Created on 9/23/2014

© 2014 LifeSpan BioSciences