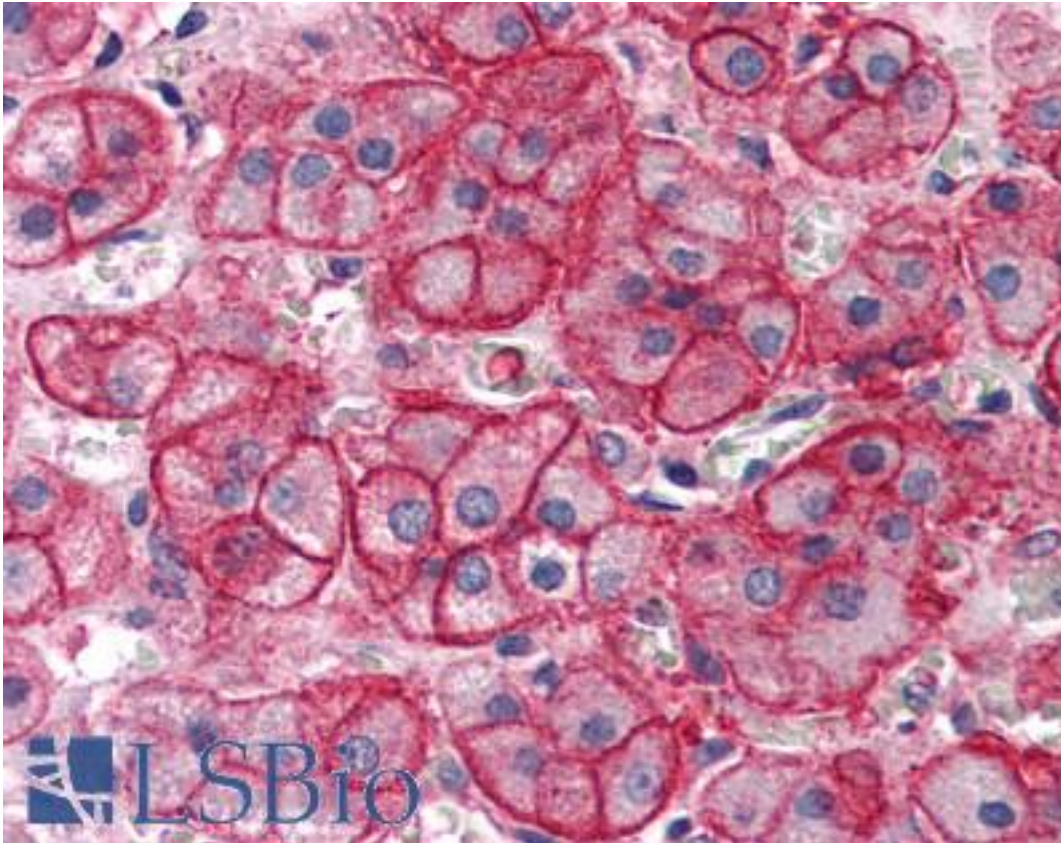


SLC1A4 / ASCT1 Rabbit anti-Human Polyclonal (C-Terminus) Antibody - LS-A9771 - LSBio

CatalogID:	LS-A9771
Target:	solute carrier family 1 (glutamate/neutral amino acid transporter), member 4 (SLC1A4)
Synonyms:	SLC1A4 Antibody, ASCT1 Antibody, SATT Antibody, ASCT-1 Antibody
Family / Subfamily:	Transporter / Sodium:dicarboxylate symporter
Host	SLC1A4 antibody was produced in Rabbit
Clonality:	Polyclonal
Immunogen Species:	SLC1A4 / ASCT1 antibody was raised against Human
Antigen Type:	Synthetic peptide
Immunogen:	SLC1A4 / ASCT1 antibody was raised against synthetic 14 amino acid peptide from C-Terminus of human SLC1A4. Percent identity with other species by BLAST analysis: Human, Gorilla, Gibbon, Marmoset (100%); Monkey, Mouse, Rat, Dog, Rabbit, Horse (93%); Elephant, Panda (86%).
Specificity:	Human SLC1A4. BLAST analysis of the peptide immunogen showed no homology with other human proteins.
Epitope:	C-Terminus
Reactivity:	Human, Gorilla, Gibbon
Predicted Reactivity:	Monkey, Mouse, Rat, Dog, Horse, Rabbit
Purification:	Immunoaffinity purified
Presentation:	PBS, 0.1% sodium azide.
Recommended Storage:	Long term: -70°C; Short term: +4°C
Uses:	IHC - Paraffin (2.5 µg/ml) (Optimal dilution to be determined by the researcher)
Size:	50 µg
Concentration:	1 mg/ml

Immunohistochemistry Image:



Anti-SLC1A4 antibody LS-A9771 IHC of human adrenal. Immunohistochemistry of formalin-fixed, paraffin-embedded tissue after heat-induced antigen retrieval.

Requested From:

Japan

Laboratory Reagent For In Vitro Research Use Only

Not for resale without prior written consent from LifeSpan BioSciences, Inc.

Created on 9/23/2014

© 2014 LifeSpan BioSciences