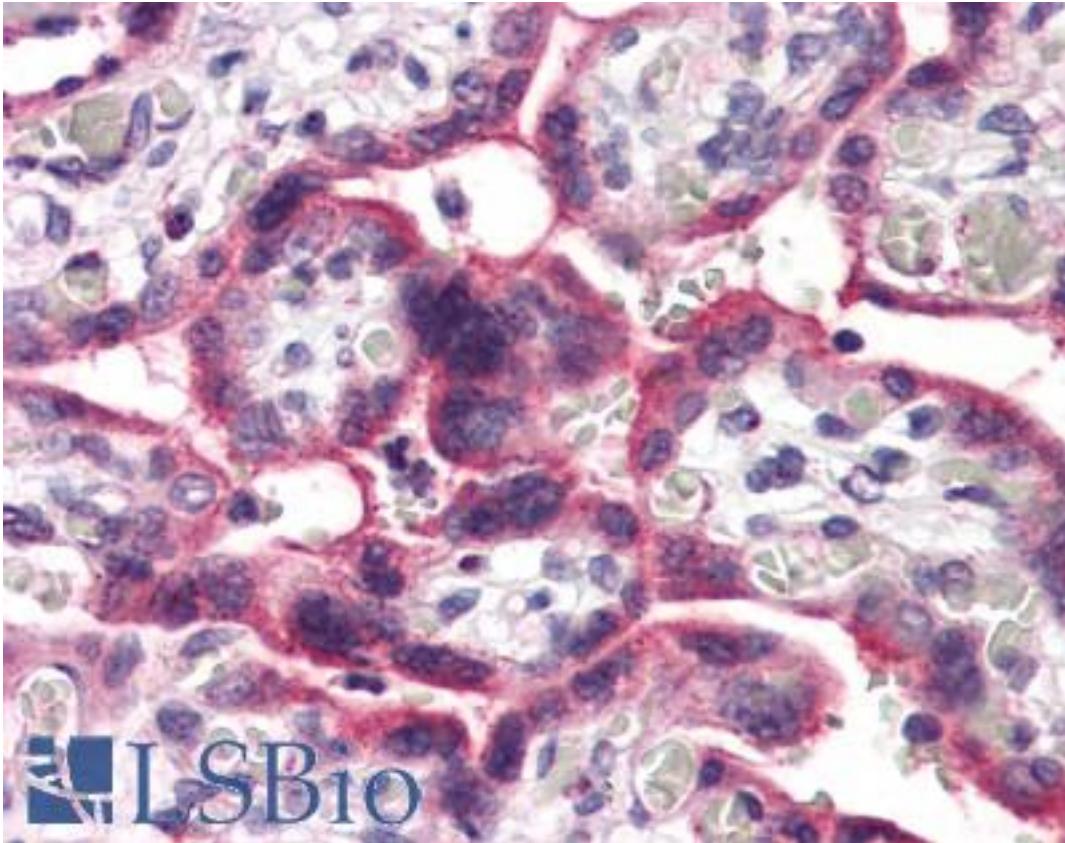


SLC5A6 / SMVT Rabbit anti-Human Polyclonal (Internal) Antibody - LS-A9768 - LSBio	
CatalogID:	LS-A9768
Target:	solute carrier family 5 (sodium/multivitamin and iodide cotransporter), member 6 (SLC5A6)
Synonyms:	SLC5A6 Antibody, SMVT Antibody
Family / Subfamily:	Transporter / Solute:sodium symporter
Host	SLC5A6 antibody was produced in Rabbit
Clonality:	Polyclonal
Immunogen Species:	SLC5A6 / SMVT antibody was raised against Human
Antigen Type:	Synthetic peptide
Immunogen:	SLC5A6 / SMVT antibody was raised against synthetic 15 amino acid peptide from internal region of human SLC5A6. Percent identity with other species by BLAST analysis: Human, Gorilla, Marmoset, Elephant, Panda, Dog, Bovine, Horse, Rabbit (100%); Monkey, Hamster, Bat, Pig, Platypus (93%); Rat, Xenopus (87%); Mouse, Opossum, Stickleback, Pufferfish, Zebrafish (80%).
Specificity:	Human SLC5A6. BLAST analysis of the peptide immunogen showed no homology with other human proteins.
Epitope:	Internal
Reactivity:	Human, Gorilla, Bovine, Dog, Horse, Rabbit
Predicted Reactivity:	Monkey, Bat, Hamster, Pig
Purification:	Immunoaffinity purified
Presentation:	PBS, 0.1% sodium azide.
Recommended Storage:	Long term: -70°C; Short term: +4°C
Uses:	IHC - Paraffin (10 µg/ml) (Optimal dilution to be determined by the researcher)
Size:	50 µg
Concentration:	1 mg/ml

Immunohistochemistry Image:



Anti-SLC5A6 antibody LS-A9768 IHC of human placenta. Immunohistochemistry of formalin-fixed, paraffin-embedded tissue after heat-induced antigen retrieval.

Requested From:

Japan

Laboratory Reagent For In Vitro Research Use Only

Not for resale without prior written consent from LifeSpan BioSciences, Inc.

Created on 9/23/2014

© 2014 LifeSpan BioSciences