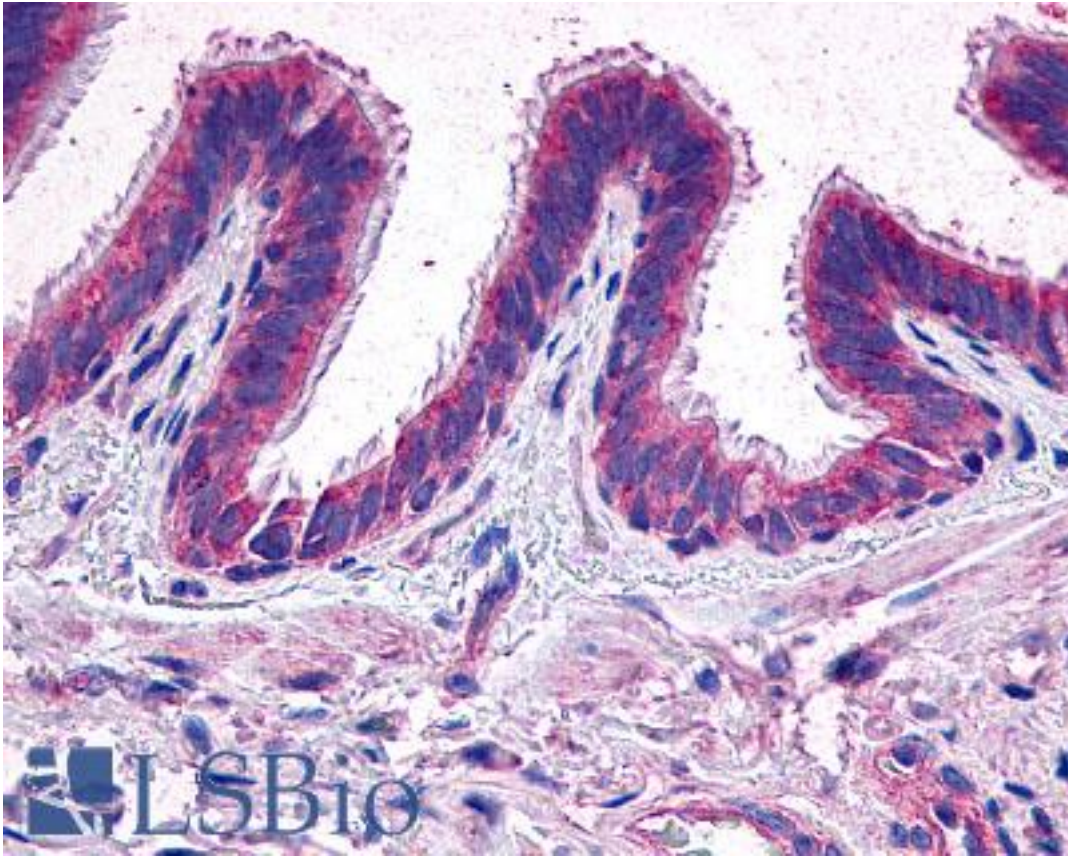


PTGER2 / EP2 Rabbit anti-Human Polyclonal (Extracellular Domain) Antibody - LS-A971 - LSBio	
CatalogID:	LS-A971
Target:	prostaglandin E receptor 2 (subtype EP2), 53kDa (PTGER2)
Synonyms:	PTGER2 Antibody, EP2 prostaglandin e2 receptor Antibody, EP2 prostaglandin receptor Antibody, EP2 Antibody, Pge2-r ep2 Antibody, PGE2 receptor EP2 subtype Antibody, Prostaglandin E receptor 2 Antibody, Prostanoid EP2 receptor Antibody, EP2 receptor Antibody, PGE receptor EP2 subtype Antibody
Family / Subfamily:	GPCR / Prostanoid
Host	PTGER2 antibody was produced in Rabbit
Clonality:	Polyclonal
Immunogen Species:	PTGER2 / EP2 antibody was raised against Human
Antigen Type:	Synthetic peptide
Immunogen:	PTGER2 / EP2 antibody was raised against synthetic 16 amino acid peptide from 3rd extracellular domain of human EP2. Percent identity with other species by BLAST analysis: Human, Gorilla, Gibbon, Monkey, Marmoset, Bat (100%); Elephant, Bovine, Dog (94%); Rat, Panda, Pig (88%); Mouse (81%).
Specificity:	Human EP2. BLAST analysis of the peptide immunogen showed no homology with other human proteins.
Epitope:	Extracellular Domain
Reactivity:	Human, Gorilla, Gibbon, Monkey, Bat
Predicted Reactivity:	Bovine, Dog
Purification:	Immunoaffinity purified
Presentation:	PBS, 0.1% sodium azide.
Recommended Storage:	Long term: -70°C; Short term: +4°C
Uses:	IHC - Paraffin (6 - 15 µg/ml) (Optimal dilution to be determined by the researcher)
Size:	50 µg
Concentration:	1 mg/ml

Immunohistochemistry Image:



Anti-EP2 antibody LS-A971 IHC of human lung. Immunohistochemistry of formalin-fixed, paraffin-embedded tissue after heat-induced antigen retrieval.

Requested From:

Japan

Laboratory Reagent For In Vitro Research Use Only

Not for resale without prior written consent from LifeSpan BioSciences, Inc.

Created on 9/23/2014

© 2014 LifeSpan BioSciences