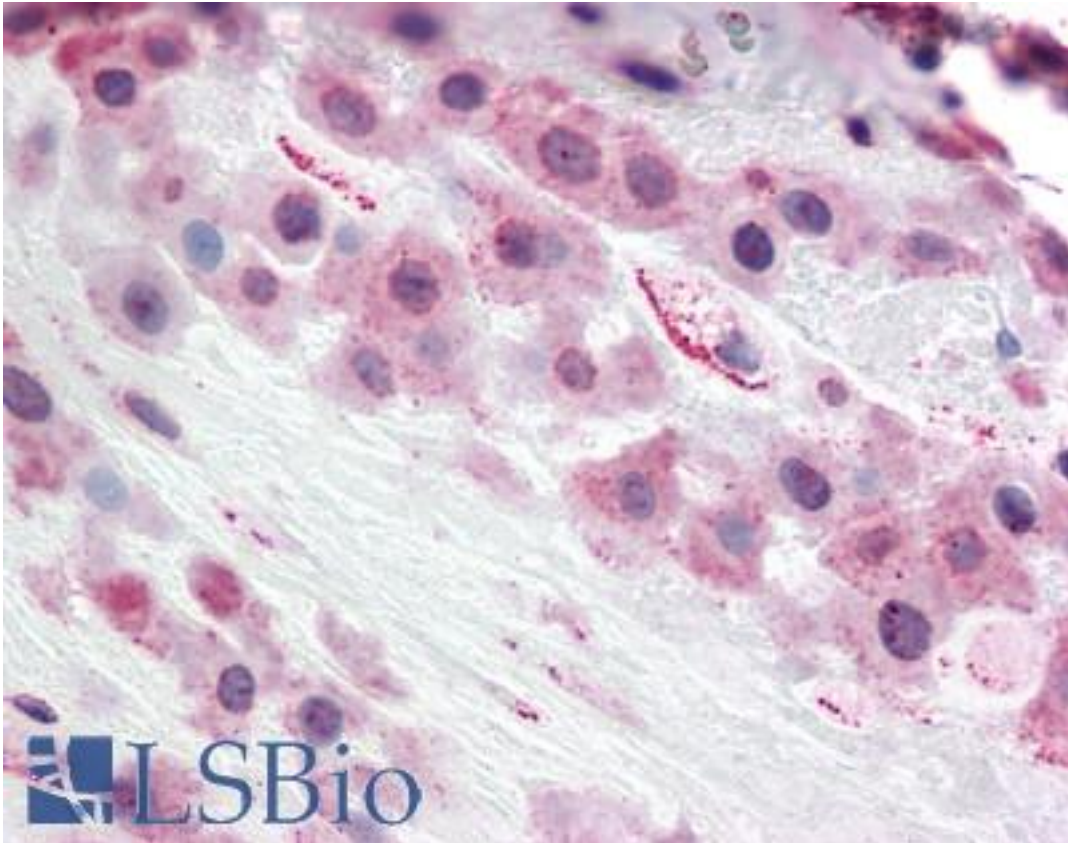


TLR4 Rabbit anti-Human Polyclonal (Internal) Antibody - LS-A9705 - LSBio

CatalogID:	LS-A9705
Target:	toll-like receptor 4 (TLR4)
Synonyms:	TLR4 Antibody, CD284 Antibody, CD284 antigen Antibody, Homolog of Drosophila toll Antibody, TLR-4 Antibody, TOLL Antibody, ARMD10 Antibody, Toll-like receptor 4 Antibody, HToll Antibody
Family / Subfamily:	Toll-like Receptor / not assigned-Toll-like Receptor
Host	TLR4 antibody was produced in Rabbit
Clonality:	Polyclonal
Immunogen Species:	TLR4 antibody was raised against Human
Antigen Type:	Synthetic peptide
Immunogen:	TLR4 antibody was raised against synthetic 16 amino acid peptide from internal region of human TLR4. Percent identity with other species by BLAST analysis: Human, Chimpanzee, Gorilla, Orangutan, Gibbon (100%); Baboon, Monkey (88%); Marmoset (81%).
Specificity:	Human TLR4. BLAST analysis of the peptide immunogen showed no homology with other human proteins.
Epitope:	Internal
Reactivity:	Human, Chimpanzee, Gorilla, Orangutan, Gibbon
Purification:	Immunoaffinity purified
Presentation:	PBS, 0.1% sodium azide.
Recommended Storage:	Long term: -70°C; Short term: +4°C
Uses:	IHC - Paraffin (5 µg/ml) (Optimal dilution to be determined by the researcher)
Size:	50 µg
Concentration:	1 mg/ml

Immunohistochemistry Image:



Anti-TLR4 antibody LS-A9705 IHC of human placenta, decidua. Immunohistochemistry of formalin-fixed, paraffin-embedded tissue after heat-induced antigen retrieval.

Requested From:

Japan

Laboratory Reagent For In Vitro Research Use Only

Not for resale without prior written consent from LifeSpan BioSciences, Inc.

Created on 9/23/2014

© 2014 LifeSpan BioSciences