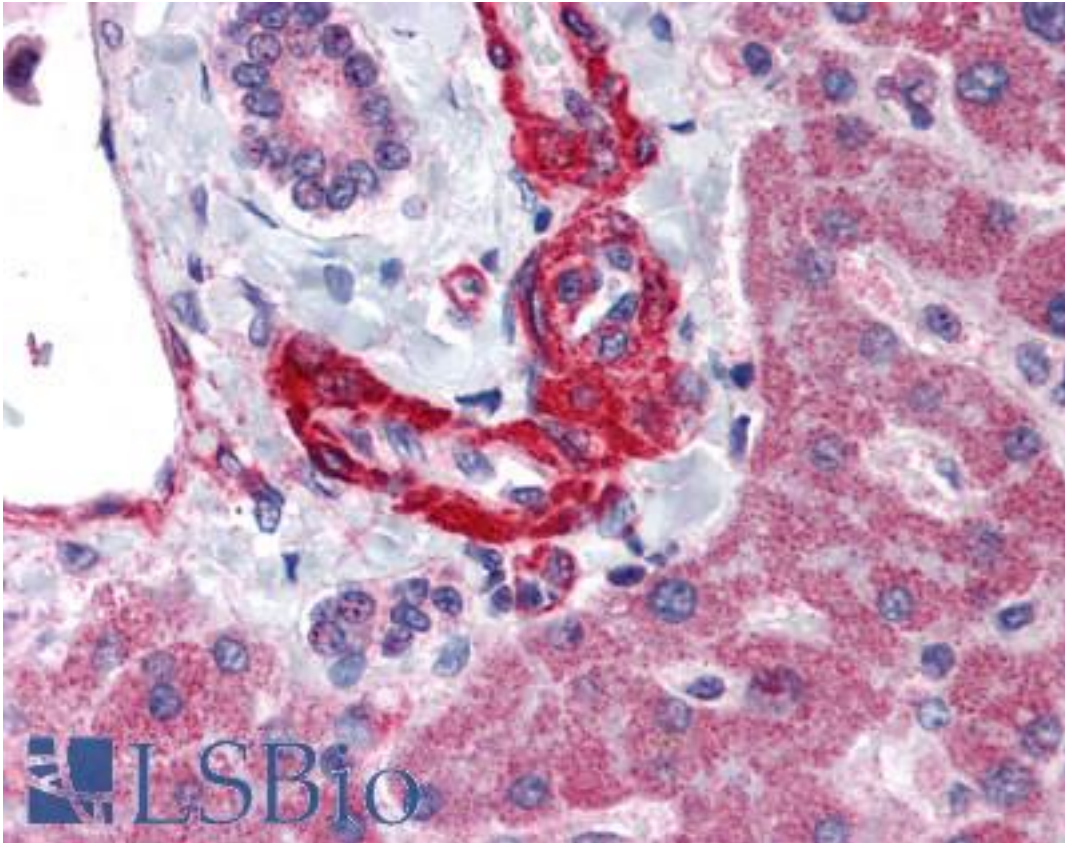


AGT / Angiotensinogen Rabbit anti-Human Polyclonal (Internal) Antibody - LS-A9700 - LSBio	
CatalogID:	LS-A9700
Target:	angiotensinogen (serpin peptidase inhibitor, clade A, member 8) (AGT)
Synonyms:	AGT Antibody, Angiotensin I Antibody, ANHU Antibody, Angiotensinogen Antibody, Pre-angiotensinogen Antibody, Angiotensin II Antibody, SERPINA8 Antibody, Serpin A8 Antibody
Family / Subfamily:	Hormone / not assigned-Hormone
Host	AGT antibody was produced in Rabbit
Clonality:	Polyclonal
Immunogen Species:	AGT / Angiotensinogen antibody was raised against Human
Antigen Type:	Synthetic peptide
Immunogen:	AGT / Angiotensinogen antibody was raised against synthetic 13 amino acid peptide from internal region of human AGT / Angiotensinogen. Percent identity with other species by BLAST analysis: Human, Chimpanzee, Gorilla, Orangutan, Gibbon, Monkey (100%); Marmoset (85%).
Specificity:	Human AGT / Angiotensinogen. BLAST analysis of the peptide immunogen showed no homology with other human proteins.
Epitope:	Internal
Reactivity:	Human, Chimpanzee, Gorilla, Orangutan, Gibbon, Monkey
Purification:	Immunoaffinity purified
Presentation:	PBS, 0.1% sodium azide.
Recommended Storage:	Long term: -70°C; Short term: +4°C
Uses:	IHC - Paraffin (2.5 - 5 µg/ml) (Optimal dilution to be determined by the researcher)
Size:	50 µg
Concentration:	1 mg/ml

Immunohistochemistry Image:



Anti-AGT / Angiotensinogen antibody LS-A9700 IHC of human liver. Immunohistochemistry of formalin-fixed, paraffin-embedded tissue after heat-induced antigen retrieval.

Requested From:

Japan

Laboratory Reagent For In Vitro Research Use Only

Not for resale without prior written consent from LifeSpan BioSciences, Inc.

Created on 9/23/2014

© 2014 LifeSpan BioSciences