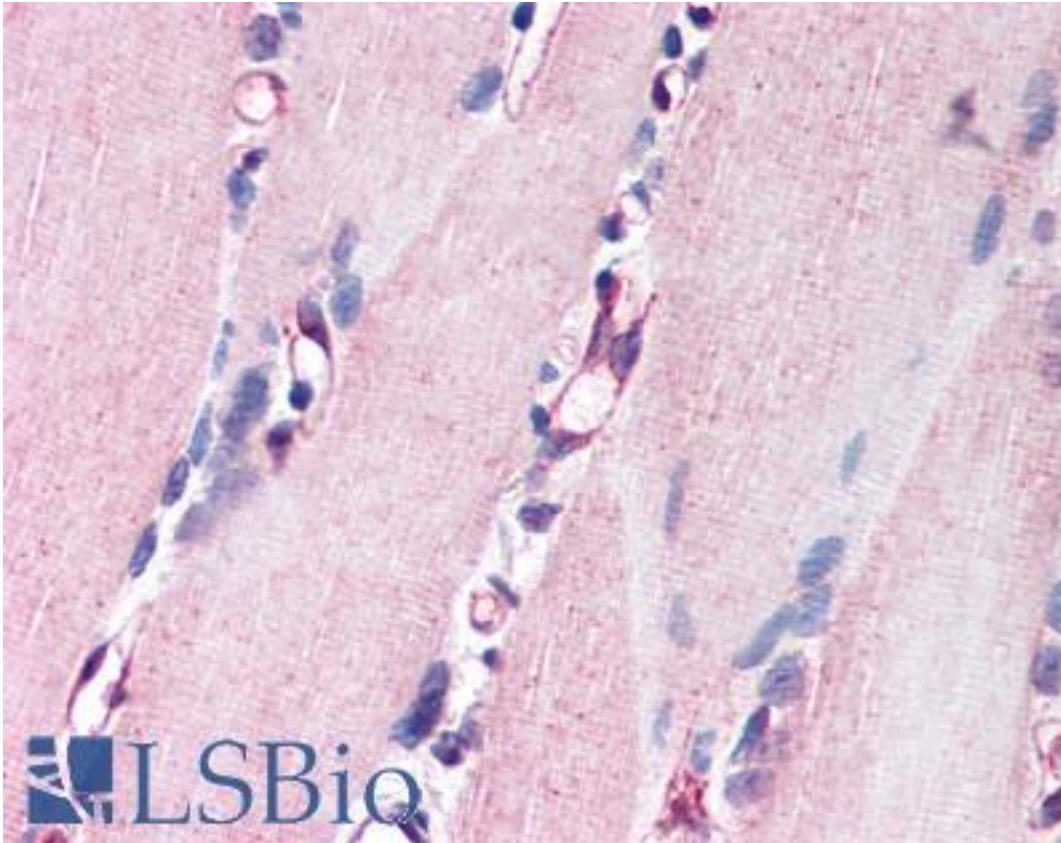


NRG1 / Heregulin / Neuregulin Rabbit anti-Human Polyclonal (Internal) Antibody - LS-A9688 - LSBio	
CatalogID:	LS-A9688
Target:	neuregulin 1 (NRG1)
Synonyms:	NRG1 Antibody, ARIA Antibody, GGF Antibody, GGF2 Antibody, Glial growth factor Antibody, Heregulin Antibody, HRGA Antibody, MSTP131 Antibody, NDF Antibody, Neu differentiation factor Antibody, Neuregulin 1 type IV beta 3 Antibody, Neuregulin 1 type IV beta 1a Antibody, HRG1 Antibody, NRG-1 Antibody, SMDF Antibody, Neuregulin 1 Antibody, Pro-NRG1 Antibody, HGL Antibody, MST131 Antibody
Host	NRG1 antibody was produced in Rabbit
Clonality:	Polyclonal
Immunogen Species:	NRG1 / Heregulin / Neuregulin antibody was raised against Human
Antigen Type:	Synthetic peptide
Immunogen:	NRG1 / Heregulin / Neuregulin antibody was raised against synthetic 17 amino acid peptide from internal region of human NRG1. Percent identity with other species by BLAST analysis: Human, Gorilla, Monkey, Marmoset (100%); Gibbon (94%); Mouse, Rat, Hamster, Elephant, Bat, Horse, Pig, Platypus (82%).
Specificity:	Human NRG1. BLAST analysis of the peptide immunogen showed no homology with other human proteins.
Epitope:	Internal
Reactivity:	Human, Gorilla, Monkey
Predicted Reactivity:	Gibbon
Purification:	Immunoaffinity purified
Presentation:	PBS, 0.1% sodium azide.
Recommended Storage:	Long term: -70°C; Short term: +4°C
Uses:	IHC - Paraffin (5 - 10 µg/ml) (Optimal dilution to be determined by the researcher)
Size:	50 µg
Concentration:	1 mg/ml

Immunohistochemistry Image:



Anti-NRG1 antibody LS-A9688 IHC of human skeletal muscle. Immunohistochemistry of formalin-fixed, paraffin-embedded tissue after heat-induced antigen retrieval.

Requested From:

Japan

Laboratory Reagent For In Vitro Research Use Only

Not for resale without prior written consent from LifeSpan BioSciences, Inc.

Created on 9/23/2014

© 2014 LifeSpan BioSciences